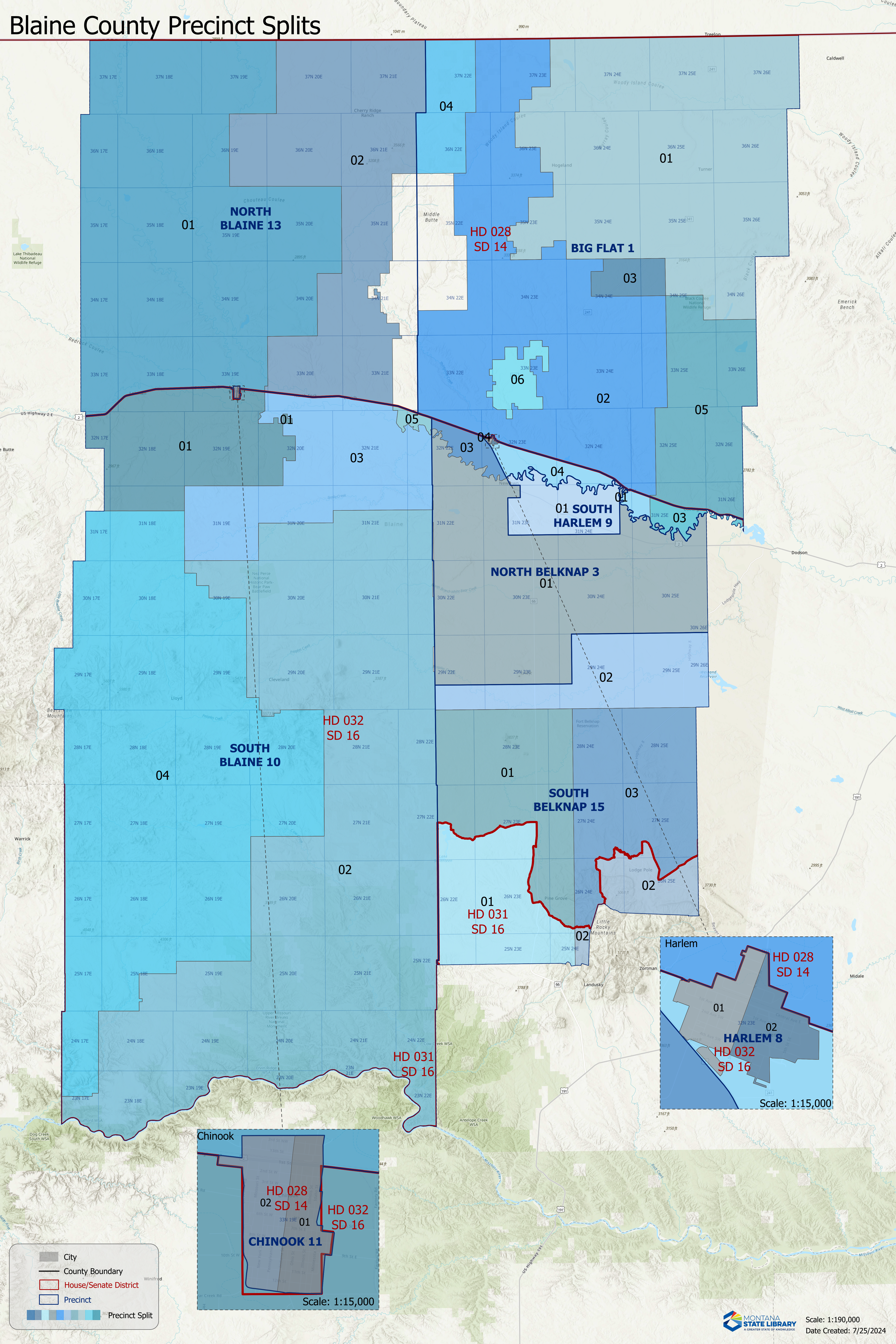


Blaine County Precinct Splits



Lake Thibadeau National Wildlife Refuge

US Highway 2 E

Warrick

Dog Creek South WSA

- City
- County Boundary
- House/Senate District
- Precinct
- Precinct Split

CHINOOK 11

HD 028 SD 14
HD 032 SD 16

Scale: 1:15,000

HARLEM 8

HD 028 SD 14
HD 032 SD 16

Scale: 1:15,000