



Organization Imagery Roll Call

12/12/23, Imagery Summit Day 1

Roll Call Format

- State, local, and tribal were invited to participate
- Each organization was given the same four questions:
 1. Describe the aerial imagery your organization has and how it is made available
 2. What are your top 2 to 3 business uses for imagery?
 3. What are your challenges with imagery (top 2 to 3 pain points)?
 4. What would you want to see out of a state imagery program (your vision)?
- Presenters will take 5-minutes to answer any or all of the questions
- Additional interested organizations will have time at the end to provide input

Imagery Roll-Call Participants

1. Montana State Library – Troy Blandford and Erin Fashoway
2. Dept. of Natural Resources – Bret Lian
3. MT Dept. of Transportation – Mike Kuni
4. Dept. of Revenue – Robin Rude
5. Dept. of Environmental Quality – Mark Blevins
6. University of Montana, Mansfield Library – Donna McCrea
7. City of Missoula – Lee Macholz
8. City of Bozeman – Gail Jorgenson
9. Yellowstone County – Mike Powell

... Open Mic!



MONTANA
STATE LIBRARY

A GREATER STATE OF KNOWLEDGE

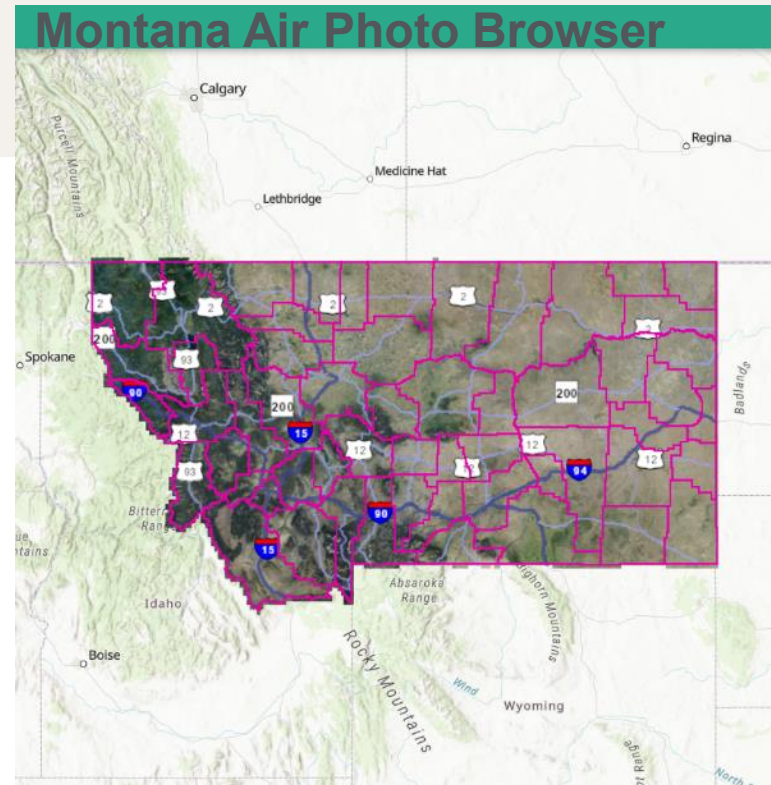


Q1. Describe the aerial imagery your agency has and how it is made available

Imagery at MSL:

- Statewide 4-band NAIP at 60cm resolution, 2005, 2009, 2011, 2013, 2015, 2017, 2019, 2021
- 1990 – 2003 black and white, statewide orthos
- Mid-20th century, b&w USGS Single Frame Archive, statewide
- US/Canada Border, 2009
- Several local areas, Helena 2004, 2006; Butte 2002; Gallatin Valley 2001
- 2021 Yellowstone flooding
- Various project-based (basins), e.g., Flathead Basin and Yellowstone Basin, various years and resolutions

Montana State Library

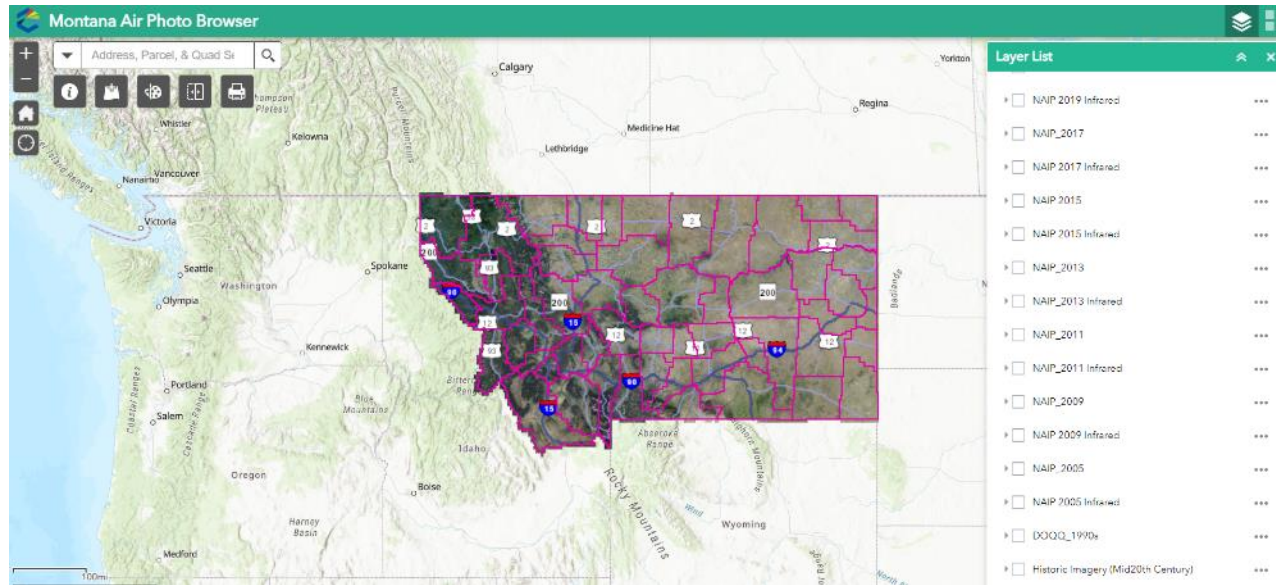


How is imagery made available:

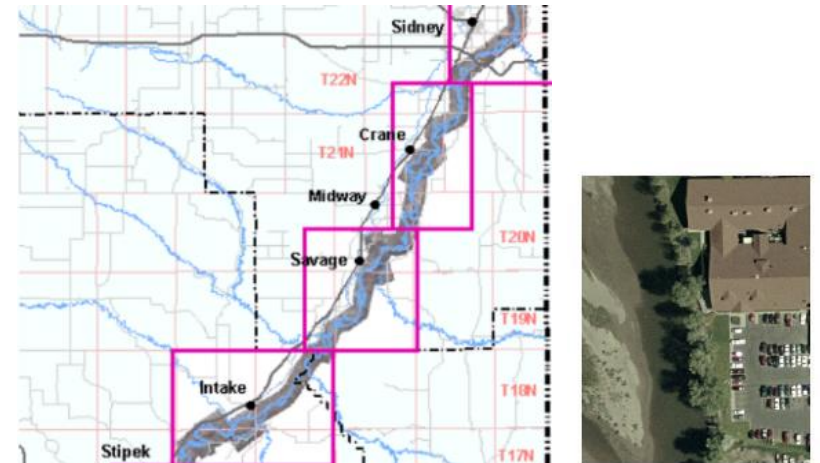
- Public GIS web services for statewide imagery
 - S3 bucket, .mrf format
- Downloadable in compressed (MrSID format)
- Original Tiffs by request
 - via OneDrive
 - sometimes external drives are sent...yikes

Q1. continued

Statewide collections



Ad hoc imagery collections



Q2. What are your top 2 to 3 business uses for imagery?

Top business uses:

1. Essential base layer for the MSDI themes that MSL stewards: transportation, hydro, land cover, structures and addresses . . .
2. We are a data provider. Interested in broad use to increase the value of imagery.



Q3. What are your agency's challenges with imagery (top 2 to 3 pain points)?

1. Challenging to know where to direct requests. Must check multiple places. Having to turn down collections.
2. Our primary interest is in statewide imagery. As a huge state, the cost of new, high-res imagery is tremendous. Storage costs.
3. Sorting what imagery is available elsewhere (dup.) and the value of having a "Montana" version. Once we have the imagery, it is hard to discard.

Q4. What would you want to see out of a state imagery program (your vision)?

- Imagery becomes more valuable with more use, so let's make that happen. There is an inventory of aerial imagery collected within Montana by various organizations and the imagery is readily available in common geospatial formats. Imagery acquisitions are coordinated, cost-effective, and do not duplicate.

Thank you!

