



Q1. Describe the aerial imagery your agency has and how it is made available

MT Dept. of Revenue

List the imagery:

- a. NAIP
- b. Eagleview-2022 Flooding
- c. ArcGIS Pro Imagery
- d. County flown imagery
- e. Nearmap



How is imagery made available:

- a. Provided by State Library
- b. Harddrive or Flood Hub
- c. ESRI Service
- d. Single fly-overs harddrive
- e. Webservice subscription

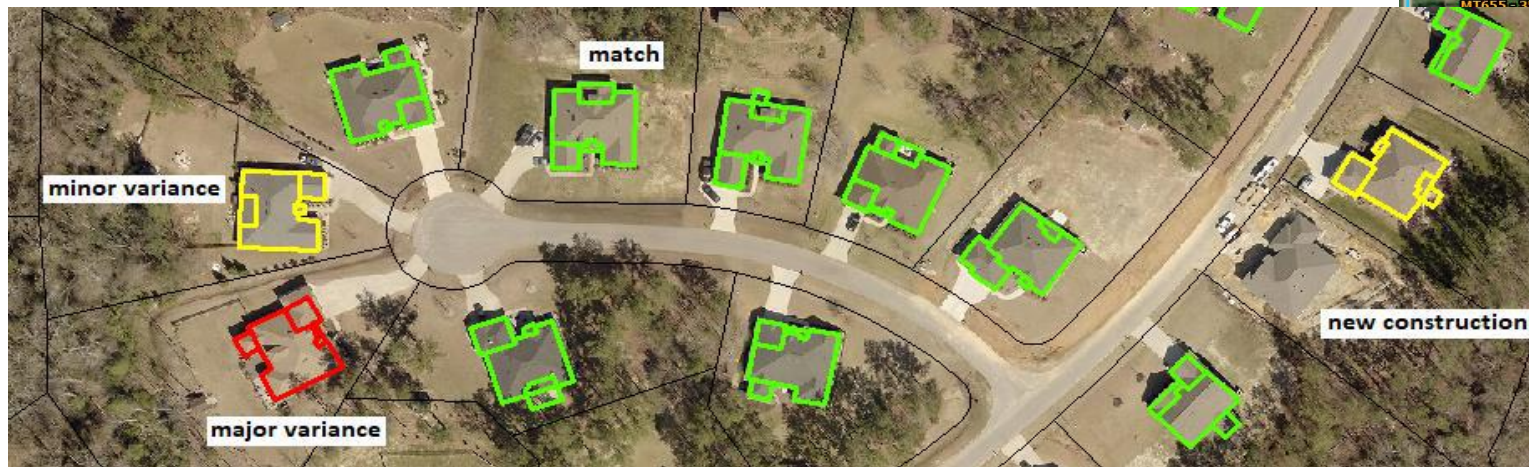
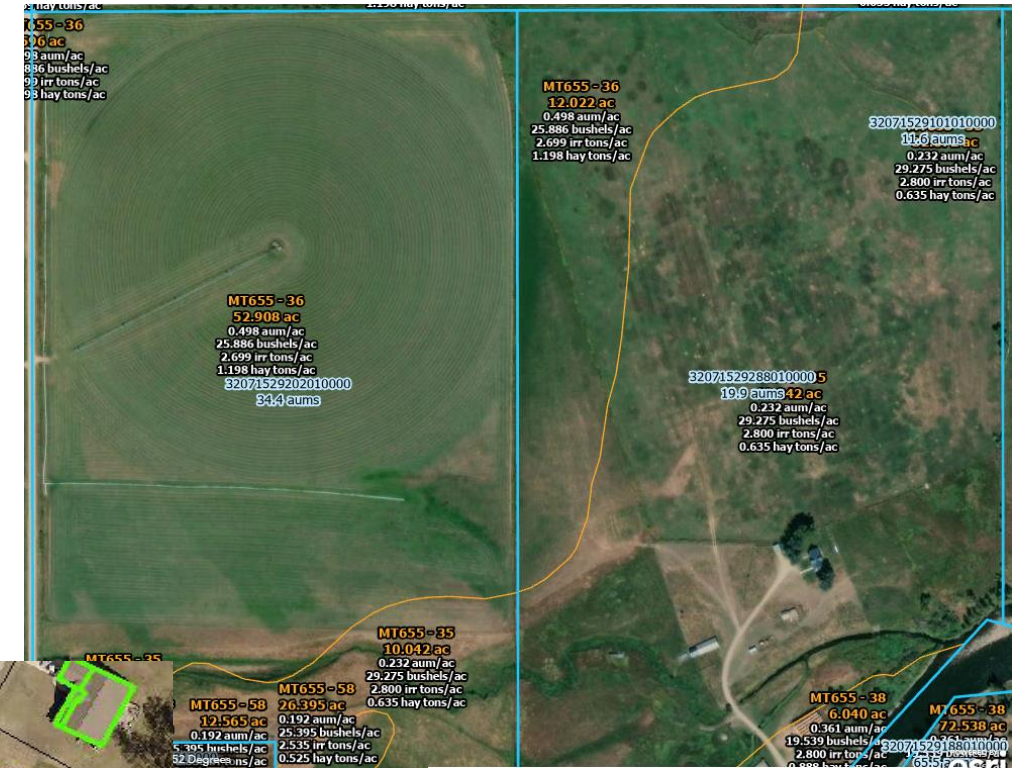
Q1cont.



Q2. What are your top 2 to 3 business uses for imagery?

Top business uses:

1. Ag and Timber productivity analysis
2. Change Detection
3. Property Appraisal
 - Ability to measure



Q3. What are your agency's challenges with imagery (top 2 to 3 pain points)?

1. Cost
2. Quality - resolution, clouds, fires
3. Coverage - high quality is in limited areas
4. Budget office's hesitancy to purchasing imagery for DOR

Q4. What would you want to see out of a state imagery program (your vision)?

- High quality statewide imagery
 - Available to all agencies - higher quality more frequent flights
 - Shared buy from agencies for affordable access
- Hub where different state agencies can share their purchased imagery
- More frequent imagery updates (NAIP is 2 years + wait time)

Thank you!

