

BOZEMAN^{MT}

Geographic Information System



Q1. Describe the aerial imagery your organization has and how it is made available

- Earliest maps of the city which are scanned, georeferenced, to scale and are in .PNG format are Sanborn maps beginning in 1884 through 1912
- NAIP Imagery – 2005, 2009, 2011, 2013, 2015 & 2017
- LiDAR 2012, 2018, 2024
- Landcover – 2023
- Imagery – 1969, 1980, 1987, 1990, 1992, 1994, 1995, 1996, 2000, 2004, 2007, 2012, 2015, 2016, 2018, 2021, 2023,

City of Bozeman



How is imagery made available:

- [Open Data Portal](#)
 - Down load and services
- For internal and external use
- External hard drives that we share (leave your business card)
- FTP portal sharing

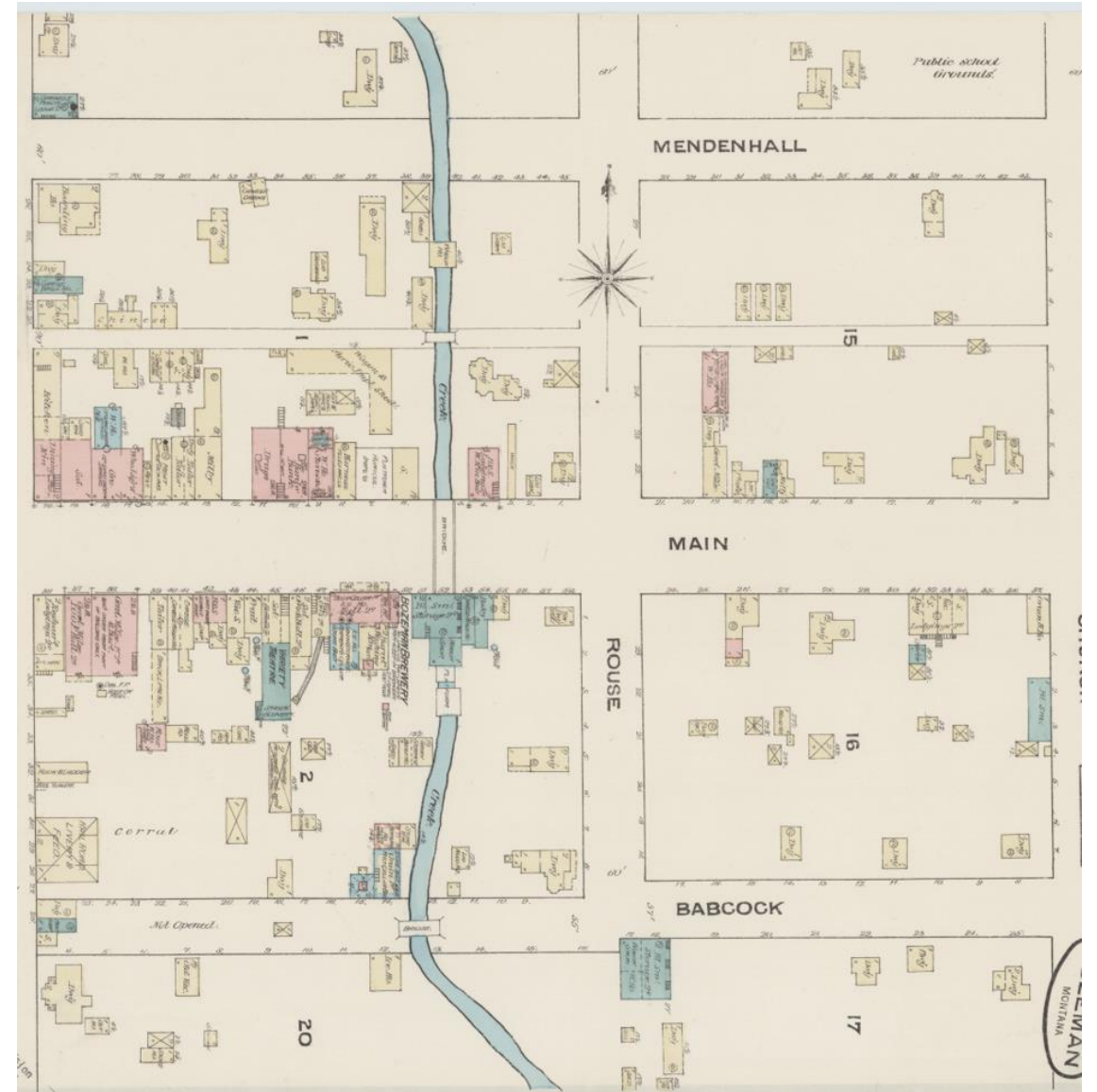
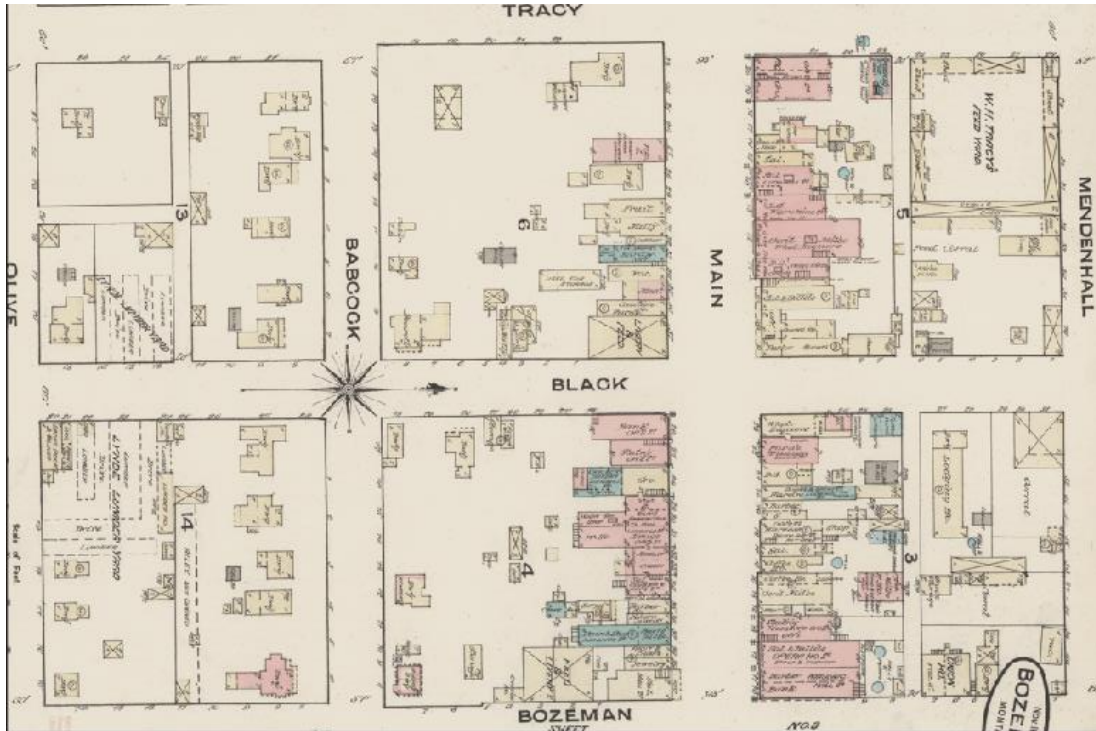
Q1 cont. more example images as needed



Q2. What are your top 2 to 3 business uses for imagery?

Top business uses:

1. Planimetric Data
2. Planning Projects
3. Engineering Projects
4. Regulatory Compliance



Q3. What are your organization's challenges with imagery (top 2 to 3 pain points)?

feel free to add pics to illustrate your point

1. Request for Proposals
2. Time it takes to receive the data back
3. Size of the data (terabytes)



Q4. What would you want to see out of a state imagery program (your vision)?

- The City of Bozeman has an extensive collection of imagery. Two years ago the City moved to a yearly collection cycle for imagery and two year collection cycle for LiDAR (imagery and LiDAR collected during the same flight). We also began collecting leaf on imagery (August 2023) along with Land Classifications that include a Lawn/Turf layer (12" pixel scale).
- We would like to incorporate **oblique imagery** into our GIS/Asset Management workflows and are actively researching this.
- While we have explored incorporating **drone imagery** into our data repository mostly it is on a case by case basis.

Thank you!

