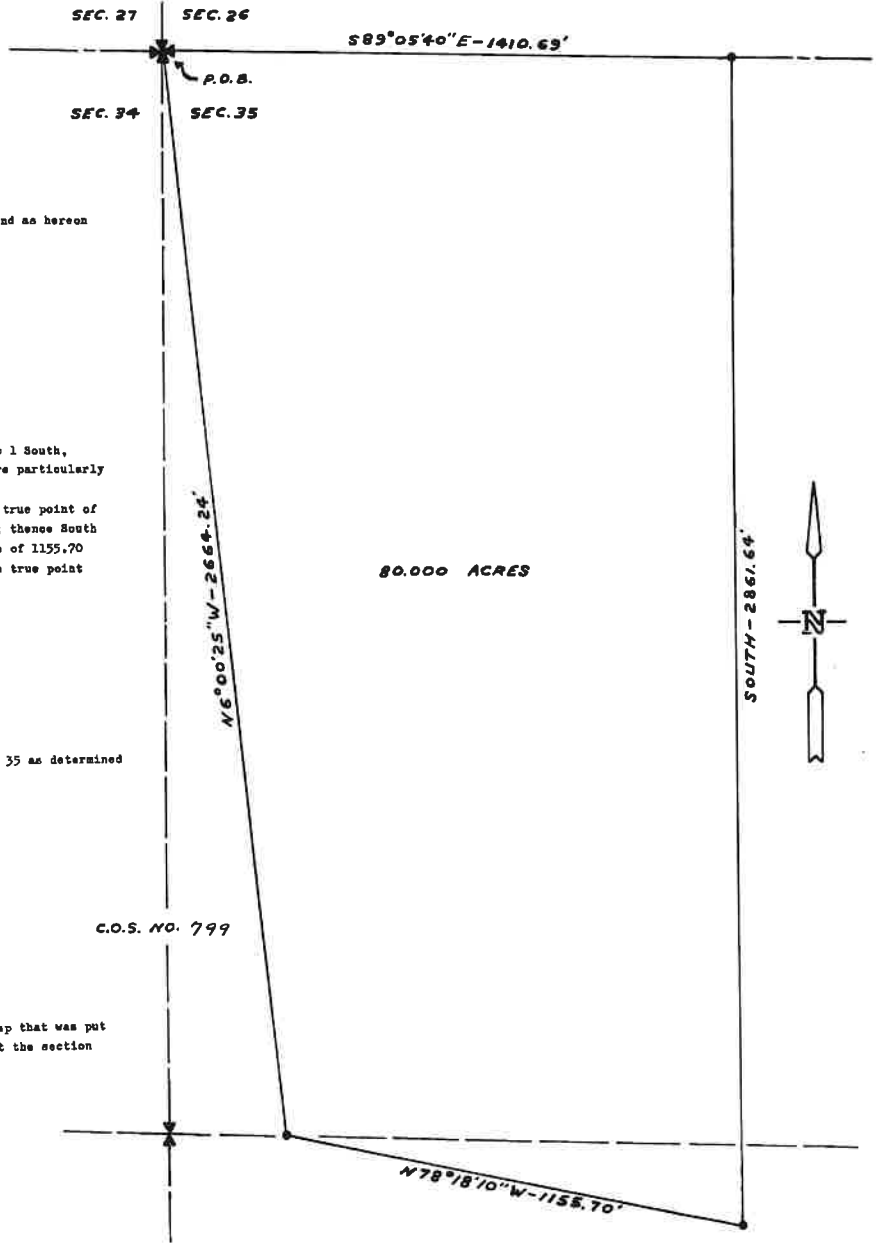


CERTIFICATE OF SURVEY
 OF A TRACT OF LAND IN
 THE W1/2 OF SECTION 35,
 TOWNSHIP 1 SOUTH, RANGE 9 EAST, PRINCIPAL MERIDIAN,
 PARK COUNTY, MONTANA

Owners : Kenny and Susie Meigs



The purpose of this survey is to establish this tract of land as hereon shown and is applicable to Section 76-3-404(d), M.C.A.

DESCRIPTION OF TRACT

A tract of land located in the W1/2 of Section 35, Township 1 South, Range 9 East, Principal Meridian, Park County, Montana, more particularly described as follows:

Commencing at the Northwest corner of said Section 35, the true point of beginning; thence S 89°05'40" E a distance of 1410.69 feet; thence South a distance of 2861.64 feet; thence N 78°18'10" W a distance of 1155.70 feet; thence N 6°00'25" W a distance of 2664.24 feet to the true point of beginning. Said tract contains 80,000 acres.

Basis of bearings is North along the West line of Section 35 as determined by the original surveyor and it is assumed to be correct.

C.O.S. NO. 799

• - Denotes a 5/8" x 24" iron pin with an attached Surv-Kap that was put in place on this survey. One was also put in place at the section corner and quarter corner hereon shown.



The field work and this C.O.S. were completed
 Sept. 4, 1985.
 By Raymond W. Egan
 Registration No. 3708 S
 Box 721, Big Timber, Montana

STATE OF MONTANA) ss. 187551
 COUNTY OF PARK)

Filed this 5th day
 of September 1985
 at 12:00 o'clock P.M.

County Clerk and Recorder
 By Kathryn M. Bux
 Deputy

1 2/2 Fee 35¢

008870