

CERTIFICATE OF SURVEY

RETRACING CERTAIN SECTION LINES AND HIGHWAY RIGHT OF WAY IN SECTIONS 35, 26, 27, 23, 22, 15, 16, 9, & 4 IN TOWNSHIP 1 SOUTH, RANGE 10 EAST, AND SECTION 32 IN TOWNSHIP 1 NORTH, RANGE 10 EAST, P.M.M.; PARK COUNTY, MONTANA

SURVEYOR'S NOTES

PURPOSE OF SURVEY
The purpose of this survey is to retrace certain section lines and highway right of way. No new parcels have been created; therefore, this survey is exempt from review as a subdivision. This survey was completed in July, 2005.

MDT Project No. F 59-1(71) is controlled by ties to HARN marks D123RESE, E128RESE, H490, and X558. These marks were held in the final/last square adjustment based on the NAD83(92) datum. Fast static observations were made with survey grade, dual-frequency GPS receivers. All monuments on this survey were located with GPS RTK and/or fast static observations based on the following control points:

NAD 83(92) STATE PLANE FEET COORDINATES - MONTANA 2500

MARK	NORTH	EAST	MARK	NORTH	EAST
1.1A	534677.648	1723152.175	4.0A	548287.953	1715335.221
1.5A	536520.408	1721543.836	8.0C	552044.163	1714174.595
2.2A	540364.624	1719749.083	5.1Y	553494.995	1713597.523
3.2A	544780.602	1717574.276	5E	557419.327	1712564.576
3.5Y	546079.761	1716623.519	7.0A	563627.065	1710966.304

Distances shown on this plan are International ground feet; they have been converted from Montana State Plane grid distances by using the following combination scale factors:

South of Railroad Centerline PT 196+43.4: 0.99943244
North of Railroad Centerline PT 196+43.4: 0.99941123

The convergence angle at Point No. 161, the east 1/4 corner of Section 16 is -0°43'25".

The found right of way reference monuments, various diameter steel pins, were used to calculate the centerline of the highway on both sides from the overpass to the point where the highway right of way intersects the railroad right of way in Section 26; from that point north these reference pins were used to determine the easterly highway right of way only. The record distance from the reference monuments to the right of way line is two feet. The westerly highway right of way is determined by the railroad centerline.

REFERENCES

- (R1) C.D., 1873, W.H. Baker & J.H. Thomas
- (R2) G.D., 1886, J. Johnson
- (R3) Northern Pacific Railway Shields River Branch Index Map
- (R3A) Northern Pacific Railway Shields River Branch Track Profile, Mission to Willard
- (R4) MDT Right of Way Plans, FAP 60B, 1939
- (R5) MDT Right of Way Plans, FAP 60C, 1939
- (R6) MDT Right of Way Plans, FG 60(11), F 60(11), 1952
- (R7) Deed Exhibit, Book 86, Pages 515-517, January 20, 1953; Northern Pacific Railway to MDT
- (R8) Deed Exhibit, Book 86, Pages 504-505, May 2, 1940; Northern Pacific Railway to MDT
- (R9) MDT Right of Way Plans, F59-1(217), 1979
- (R10) Plat No. 564, 1971, 287ES
- (R11) Plat No. 322, 1973, 287ES
- (R12) Plat No. 610, 1973, 287ES
- (R13) COS No. 67, 1975, 287ES
- (R14) COS No. 76, 1975, 3176LS
- (R15) COS No. 472, 1980, 287ES
- (R16) COS No. 503A, 1980, 422ES
- (R17) COS No. 582, 1981, 4955LS
- (R18) COS No. 844, 1986, 7686LS
- (R19) COS No. 988, 1989, 8374LS
- (R20) COS No. 1217, 1993, 3916LS
- (R21) COS No. 1329, 1994, 2923LS
- (R22) COS No. 1432, 1997, 7686LS
- (R23) COS No. 1518, 1999, 10010LS
- (R24) COS No. 1796, 2003, 6305LS
- (R25) RW Deed, Book 86, Pages 469-70

RAILROAD

The Shields River Valley Railway Company purchased right of way from landowners in 1909. It conveyed its interests to Northern Pacific Railway Company by deed dated June 23, 1914 and filed for record on January 26, 1916 (Book 46, Page 29). The track map and track profile were prepared by Northern Pacific Railway. In 1985 the railroad was apparently abandoned (Federal Surface Transportation Board Docket No. AD-6, Sub No. 262). In 1987, Burlington Northern Railroad Company sold its interest in the Shields River Branch to Montana RollLink (Roll 64, Pages 149-153).

The deed from the State of Montana to the Shields River Valley Railway Company (Book 39, Page 117) for right of way in the NE 1/4 and the E 1/2 SE 1/4 Sec. 16, contains this reversionary clause: "It is further provided that whenever said lands herein granted as a right of way shall cease to be used for such purpose, the same shall revert to the state upon notice to that effect being given to the said Shields River Valley Railway company, the grantee named herein." At this time Montana RollLink maintains that this railroad is "in service." The status of the easement from the State of Montana to the railroad is yet to be determined.

The Northern Pacific Railway track profile map was used in this survey for stationing. There were some discrepancies between the track profile map and the track map, notably, the longest bearings on the track map do not produce the curves as shown. Changes in the railroad right of way widths were proportioned from the track profile map using these features:

RR STA.	FEATURE
44+02	SE End Iron Pipe
51+92.1	SE End Yellowstone River Bridge
55+08.3	NW End Yellowstone River Bridge
10+93.5	SE End RR Bridge No. 2
14+166.3	PP RR Curve
488+93	8' Concrete Arch Culvert
532+07.2	3' x 2' Reinforced Concrete Box Syphon

HIGHWAY RIGHT OF WAY

A portion of Federal Route 11 intersects the current right of way near Sta. 83+00 at Old Clyde Park Road. Apparently the permit from the railroad still constitutes part of the highway right of way. This project was constructed in 1922 as FAP 60A. No deeds, right of way plans or construction plans for this project were found in MDT archives. It is possible the highway was built on county road easements.

There are some discrepancies between MDT's right of way plans and the deeds from the Northern Pacific Railway. The information on the deeds was used in these instances:

- Plans F 60(10) show a 90-foot wide easement for the overpass; the deed exhibit (Volume 86, Pages 547-549) shows a 100-foot wide easement.
- Plans F 60B show a 15-foot easement from stations 102+00 to 106+00; the deed exhibit (Volume 68, Pages 504-505) does not show this easement.
- Plans F 60C show 10-foot easements between stations 303+00 to 308+00 and 314+34 to 320+00; the deed exhibit (Volume 68, Pages 504-505) does not show these easements.
- Found monuments 313 and 314 were probably set to mark the right of way break 70' right at record station 92+00. Their position does not agree with the right of way deed (Book 69, Page 400), which calls for a point 333.7' south along the centerline from the section line and 70' right. Monuments 313 and 314 are about 282' south of the section line along the highway centerline and about 70' right. The highway right of way plans do not indicate that the north line of Section 27 was located by survey; no survey notes for this section were found.
- Found monuments 323, 324 and 424 were probably meant to be on the section line common to Sections 15 and 16. The highway right of way plans do not indicate that this section line was located by survey nor were any survey notes found. The monuments may have been set on a protected line.

MDT Plans F 60C show an additional 170-foot width of right of way delimited by an exbow of the Shields River in Section 4, T1S R10E. MDT obtained an easement from Clara Pauline Erwin (Book 68, Page 519, May 9, 1940).

This 170-foot strip is not shown as right of way on this certificate of survey because Mrs. Erwin had no interest in this land.

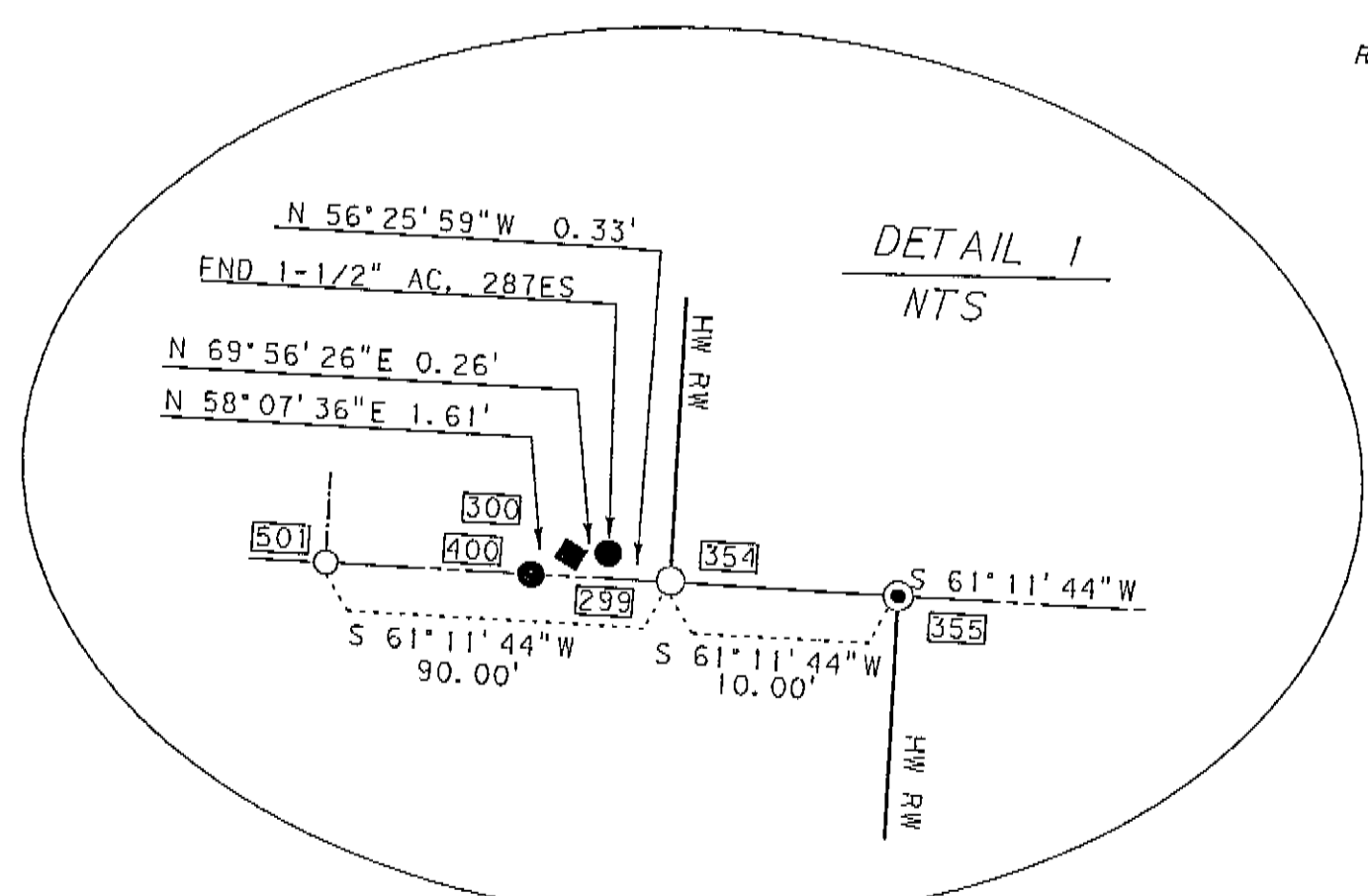
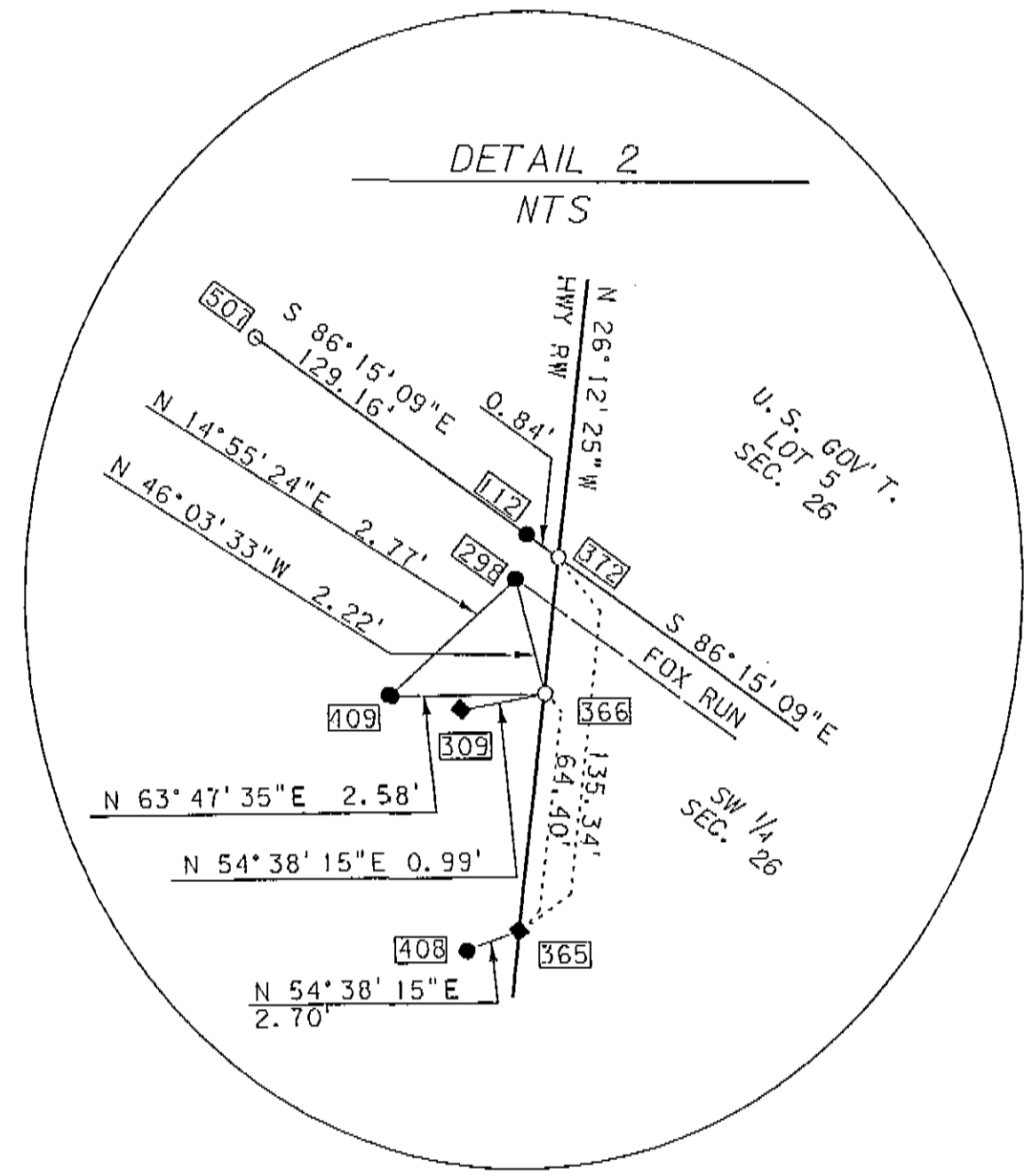
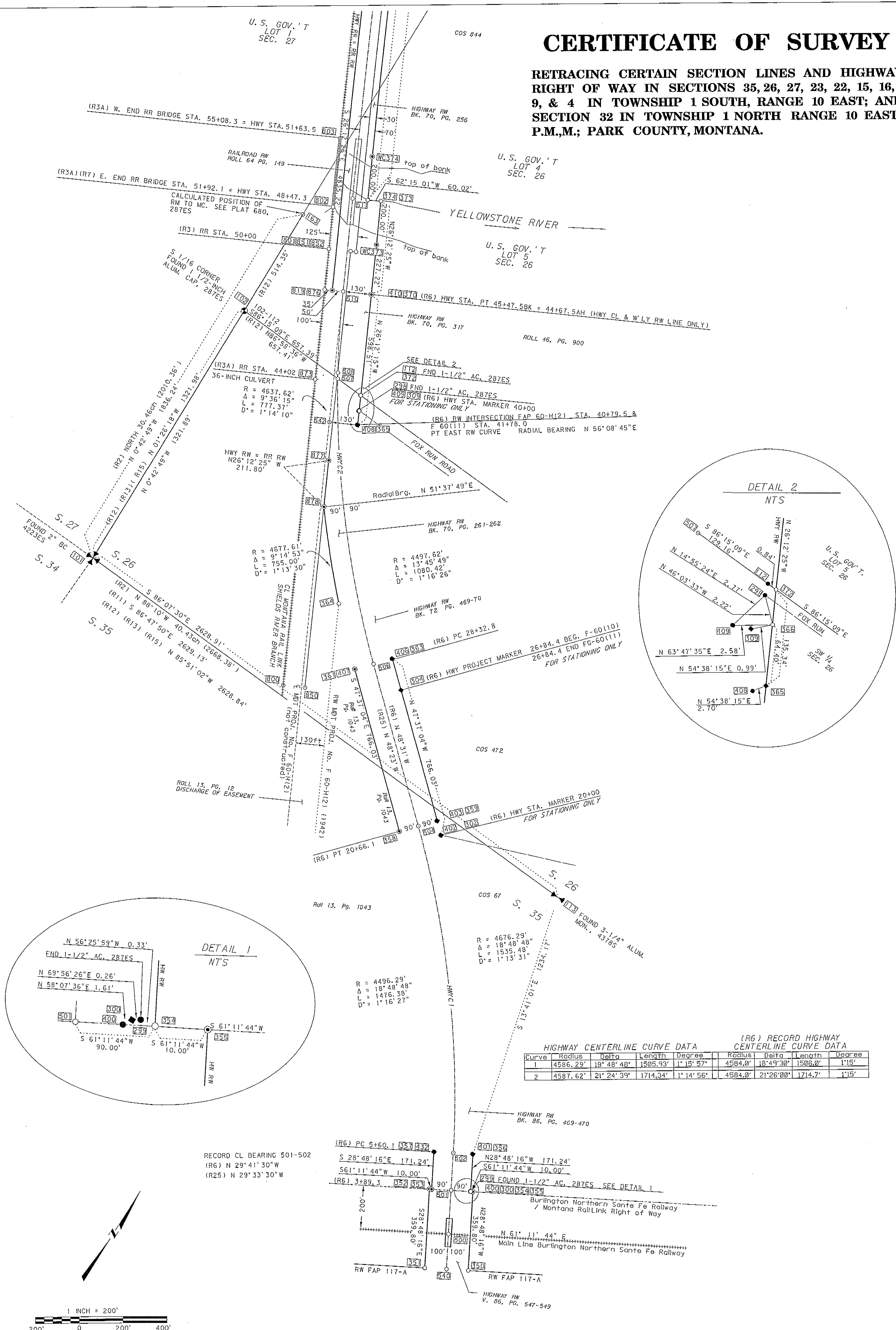
- The legal description for the parcel (Noble O. Erwin to Clara Pauline Erwin, Volume 66, Page 181, November 28, 1936) places Mrs. Erwin's land several hundred feet east of the highway centerline; the centerline of the main channel of the Shields River is the west boundary of the parcel and it is today several hundred feet east of the highway.
- The exbow shown on the highway plans and railroad plans is not the main channel of the Shields River; it is an overflow channel.

MONTANA COORDINATE SYSTEM NAD 83(99) ZONE 2500

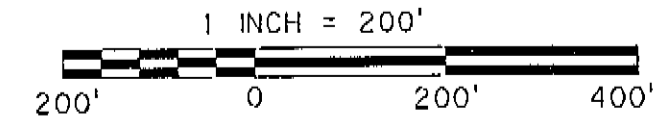
POINT	NORTH	EAST	DESCRIPTION	POINT	NORTH	EAST	DESCRIPTION
101	534687.4310	1721373.9260	FND 2" BC, NW COR S35 T10S R10E, 4223ES	413	540418.4370	1719752.6430	FND 5/8" STEEL PIN, RM TO HWY CL AT STA. MARKER 90+00
102	536008.4659	1721357.4730	FND 1 1/2" AC, S1/16 COR 27&26 T1S R10E, 287ES	414	540642.5490	1719642.2670	FND 1" STEEL PIN, SEE SURVEYOR'S NOTE
103	540683.4200	1721191.5710	FND 2" BC, SE COR, S22 T1S R10E, 4223ES	416	544746.1370	1717622.8910	FND 5/8" STEEL PIN, RM TO HWY RW AT PC 38+28.2
104	540683.3530	1718665.8190	FND 2" BC, N 1/4 COR S27 T1S R10E, 4223ES	417	544701.6120	1717533.1260	FND 5/8" STEEL PIN, REFERENCE TO HWY CL AT PC 38+28.2
105	540653.5320	1718547.7000	FND 2 1/2" BC, N 1/4 COR, S22 T1S R10E, 4223ES	418	545381.5400	1717258.5650	FND 1/2" STEEL PIN, RM TO HWY RW AT PT 145+53.2 RT
106	551703.9210	1719272.0010	FND 3 1/4" MDT ALUM. MON. N 1/4 COR, S16 T1S R10E, 4378S	419	545326.0470	1717193.3920	FND 1/2" STEEL PIN, REFERENCE TO HWY CL AT PT 145+53.2
109	557013.9821	1710592.7161	FND 3 1/4" MDT ALUM. MON. SW COR, S4 T1S R10E, 4378S	421	547807.3620	1715655.5670	FND 1/2" STEEL PIN, RM TO HWY RW AT PC 174+58.6 RT
110	561817.6720	1710719.7940	FND 1 1/2" AC CLOSING CORNER S4 & S5 T1S R10E, 287ES	422	547751.9950	1715571.2820	FND 1/2" STEEL PIN, BENT, RM TO HWY CL AT PC 174+58.6
111	561809.2410	1718735.6590	FND 1 1/2" AC CLOSING CORNER S3 & S4 T1S R10E, 287ES	424	548823.0110	1715113.4300	FND 1/2" STEEL PIN, RM TO HWY RW AT PT 192+40.3
112	561808.2610	1718735.6587	FND 2" AC MARKED "1/4 S4&S3 2001 9622ES"	426	549361.8540	1714813.3100	FND 1/2" STEEL PIN, RM TO HWY RW AT PT 192+40.3
113	559655.5230	1722013.0850	FND 1 1/2" AC MARKED "RW NO. 6" ON 1/16 LINE, 287ES	428	549376.2507	1714854.5717	FND 1/2" STEEL PIN, RM TO HWY RW AT TS 346+52.3 RT
114	534509.8760	1723995.3410	FND 3 1/4" MDT ALUM. MON. S 1/4 COR, S26 T1S R10E, 4378S	432	532225.8310	1724131.2180	FND 3/4" STEEL PIN, RM TO HWY RW AT PC 5+60.1
123	551579.0670	1716030.2950	FND 3 1/4" MDT ALUM. MON. NE COR, S16 T1S R10E, 2923S	500	532943.1267	1724386.9891	CALCULATED HWY CL POINT AT BEGINNING OF PROJECT
150	556862.8290	1713546.7000	FND 3 1/4" MDT ALUM. MON. S 1/4 COR, S4 T1N R10E, 2923S	501	533110.1070	1724261.7749	CALCULATED HWY CL POINT AT POT 3489.3
152	561720.9150	1713513.5770	FND 3 1/4" MDT ALUM. MON. SE COR, S32 T1N R10E, 2923S	502	533268.0780	1724208.3129	CALCULATED HWY CL POINT, PC 5+60.1
154	561810.6960	1710455.9990	FND 3 1/4" MDT ALUM. MON. S 1/4 COR S32 T1N R10E, 2923S	504	534445.3656	1723281.5091	CALCULATED HWY CL POINT, PT 20+66.1
155	561614.9170	1716571.1080	FND 3 1/4" MDT ALUM. MON. S 1/4 COR, S31 T1N R10E, 2923S	506	534961.4353	1722715.9885	CALCULATED HWY CL POINT, PC 28+32.8
158	546116.9070	1716038.3940	FND 2 1/2" ALUM. CAP, SW COR, S16 T1S R10E, 2923S	507	535973.9599	1721864.2789	CALCULATED HWY CL POINT AT INTERSECTION WITH RR RW
162	548873.8210	1710668.6830	FND 2 1/2" ALUM. CAP W 1/4 COR, S16 T1S R10E, 6305S	508	535997.5771	1721870.0798	CALCULATED HWY CL POINT AT INTERSECTION WITH RR RW
163	536522.4861	1721351.0711	CALCULATED POINT FOR MEANDER CORNER, US GOV'T LOT 5 S26	510	536323.4131	1721692.9271	CALCULATED HWY CL POINT, PT 45+47.5 BACK/44+67.5 AHEAD
164	539088.4202	1721190.6298	CALCULATED POINT FOR MEANDER CORNER, US GOV'T LOT 4 S26	511	536705.0059	1721505.0804	CALCULATED HWY CL POINT AT MEDIUM OF YELLOWSTONE RIVER
165	540655.4629	1714811.4960	FND 2 3/4" BC, SW COR S23 T1S R10E, 1853S	516	540566.0271	1719604.6632	CALCULATED HWY CL POINT AT HWY STA. 92+00
287	559611.8620	1712065.5990	FND 1 1/2" AC MARKED "COR. NO. 2 HWY RW", 287ES	524	544718.7710	1717560.6344	CALCULATED HWY CL POINT, PC 38+28.2
288	559607.8890	172154.8690	FND 1 1/2" AC MARKED "1/16 C-C", 287ES	523	545346.9443	1717200.3687	CALCULATED HWY CL POINT, PT 145+53.2
294	551789.3257	1714248.9938	FND 1" YPC IN PIPE AT N RW OF SHIELDS RIVER ROAD, 7686S	524	547770.1459	1715598.7526	CALCULATED HWY CL POINT, PC 174+58.6
295	538206.0160	1721384.4960	FND 1" YPC IN PIPE AT SE CORNER MDT GRAVEL PIT, 7686S	525	547828.5607	1715560.1431	CALCULATED HWY CL POINT, PC 178+76.7
296	539312.3436	1721462.1564	FND 1" YPC IN PIPE AT NE CORNER MDT GRAVEL PIT, 7686S	526	548376.2507	1714854.5717	CALCULATED HWY CL POINT, HWY PT 192+40.3
297	536888.5100	1720606.1330	FND 1" YPC AT SOUTH LINE OF CONVICT GRADE ROAD, 4955S	527	548853.1006	1715038.9799	CALCULATED HWY CL POINT ON EAST-WEST MID-SECTION LINE SEC. 16
298	535903.4010	1722043.6340	FND 1 1/2" AC AT SOUTH LINE OF FOX RUN ROAD, 287ES	528	549431.7778	1714848.9959	CALCULATED HWY CL POINT AT PT 196+43.4
299	533161.6290	1724369.3200	FND 1 1/2" AC AT INTERSECTION OF RR RW & HW RW, 287ES	531	536903.8532	1721624.2666	CALCULATED HWY CL POINT AT NW CORNER OF SEC. 9
300	533161.5410	1724369.0790	FND CONCRETE MONUMENT	534	562614.1644	1711151.2170	CALCULATED HWY CL POINT BEGIN CONNECTION WITH F59-1(27) HWY STA. 330+00
302	534465.7382	1723391.7204	FND 4X4" CONCRETE STATION MARKER 20+00	535	563191.3010	1710989.3251	CALCULATED HWY CL POINT STA. 336+00
304	534928.0520	1722885.7209	FND 4X4" CONC. PROJECT MARKER AT STA. 26+84.4	536	563287.5203	170962.3347	CALCULATED HWY CL POINT STA. 337+00
309	535969.2850	1722044.4220	FND 4X4" CONCRETE MONUMENT, STATION MARKER 40+00	537	564202.3606	1710705.4334	CALCULATED HWY CL POINT AT TS 346+52.3
313	540419.3280	1719754.2990	FND 4X4" CONCRETE MONUMENT, STATION MARKER 90+00	540	532803.0032	1724464.0369	CALCULATED HWY CL POINT AT BEGINNING OF PROJECT
314	540643.3510	1719644.0890	FND 4X4" CONCRETE MONUMENT, SEE SURVEYOR'S NOTE	542	535786.4596	1721957.2222	CALCULATED CL POINT, F 60-H(12), RW-130'
316	544746.9410	1717624.8980	FND 4X4" CONCRETE MONUMENT, REFERENCE TO HWY CL AT PC 38+28.2	543	551175.4446	1714359.8796	CALCULATED HWY CL POINT AT END PROJ. FAP 60-B
317	547000.4620	1717530.7280	FND 4X4" CONCRETE MONUMENT, REFERENCE TO HWY CL AT PC 145+53.2	545	546987.7529	1715689.2945	CALCULATED RR CL POINT ON RR STA. 20+00
318	545382.6300	1717260.1550	FND 4X4" CONCRETE MONUMENT, REFERENCE TO HWY CL AT PC 145+53.2	601	536452.7149	1721534.5980	CALCULATED RR CL POINT RR STA. 50+00
319	545324.6290	1717173.0000	FND 4X4" CONCRETE MONUMENT, REFERENCE TO HWY CL AT PC 145+53.2	602	536625.0114	1721449.7917	CALCULATED RR CL POINT EAST END OF YELLOWSTONE BRIDGE
320	546531.9620	1716375.8970	FND 4X4" WOOD STATION POST STATION MARKER 160+00	603	536908.5460	1721310.2325	CALCULATED RR CL POINT WEST END OF YELLOWSTONE BRIDGE
322	547750.1450	1715569.6510	FND 4X4" CONCRETE MONUMENT, REFERENCE TO HWY CL AT PC 174+58.6	604	536247.4059	1720651.2293	CALCULATED RR CL POINT RR STA. 70+00
323	548823.6530	1715125.8320	FND 4X4" CONCRETE MONUMENT	605	542734.3949	1718492.8813	CALCULATED RR CL POINT RR STA. 20+00
324	548823.0900	1715115.5200	FND 4X4" CONCRETE MONUMENT	606	543810.4890	1717913.0116	CALCULATED RR CL POINT RR STA. 132+00
325	549391.9280	1714922.0230	FND 4X4" CONCRETE RW MONUMENT, RM TO HWY RW AT PT 192+40.3	607	544675.6847	1717487.1518	CALCULATED RR CL POINT RR PC 141+68.3
326	549361.4620	1714811.4960	FND 4X4" CONCRETE RW MONUMENT, RM TO HWY RW AT PT 192+40.3	608	545305.3968	1717126.0029	CALCULATED RR CL POINT RR PC 148+98.3
328	552632.8780	1711217.9300	FND 1/2" DIAMETER STEEL PIN, RW MONUMENT 70' RT AT STA. 330+00	609	546987.7529	1715689.2945	CALCULATED RR CL POINT RR AT RR STA. 178+76.7
329	563209.7495	1711055.0930	FND 1/2" DIAMETER STEEL PIN, RM TO HWY RW MONUMENT AT STA. 336+00	610	549403.4350	1714747.9554	CALCULATED RR CL POINT RR PT 196+44.4
330	563314.0100	1711056.7690	FND 1/2" DIAMETER STEEL PIN, RM TO HWY RW MONUMENT AT STA. 337+00	611	553975.9215	1713465.3324	CALCULATED RR CL POINT RR STA. 430+00
331	564230.2130	1710800.9810	FND 1/2" RW PIN IN FENCE AT TS 346+52.3	612	555903.2413	1712924.7020	CALCULATED RR CL POINT RR STA. 450+00
333	563271.9663	1710907.7029	FND 1" RED PLASTIC CAP, RM TO HWY RW	613	559651.0861	1711873.3983	RR CL POINT AT CONCRETE ARCH CULVERT RR STA. 488+93
334	564188.6313	1710651.7573	FND 1" RED PLASTIC CAP, TAG ON WITNESS POST MARKED "346+52.3, TS 55.00FT"	614	560330.7159	1711682.7561	CALCULATED RR CL POINT RR STA. 496+00

CERTIFICATE OF SURVEY

RETRACING CERTAIN SECTION LINES AND HIGHWAY RIGHT OF WAY IN SECTIONS 35, 26, 27, 23, 22, 15, 16, 9, & 4 IN TOWNSHIP 1 SOUTH, RANGE 10 EAST; AND SECTION 32 IN TOWNSHIP 1 NORTH RANGE 10 EAST, P.M.M.; PARK COUNTY, MONTANA.



(R6) RECORD HIGHWAY CENTERLINE CURVE DATA				(R6) RECORD HIGHWAY CENTERLINE CURVE DATA			
Curve	Radius	Delta	Length	Degree	Radius	Delta	Length
1	4586.29'	18° 48' 48"	1505.93'	1° 15' 57"	4584.0'	18° 49' 30"	1506.0'
2	4587.62'	21° 24' 39"	1714.34'	1° 14' 56"	4584.0'	21° 26' 00"	1714.7'



SEE LEGEND ON SHEET 7

PARK COUNTY, MONTANA

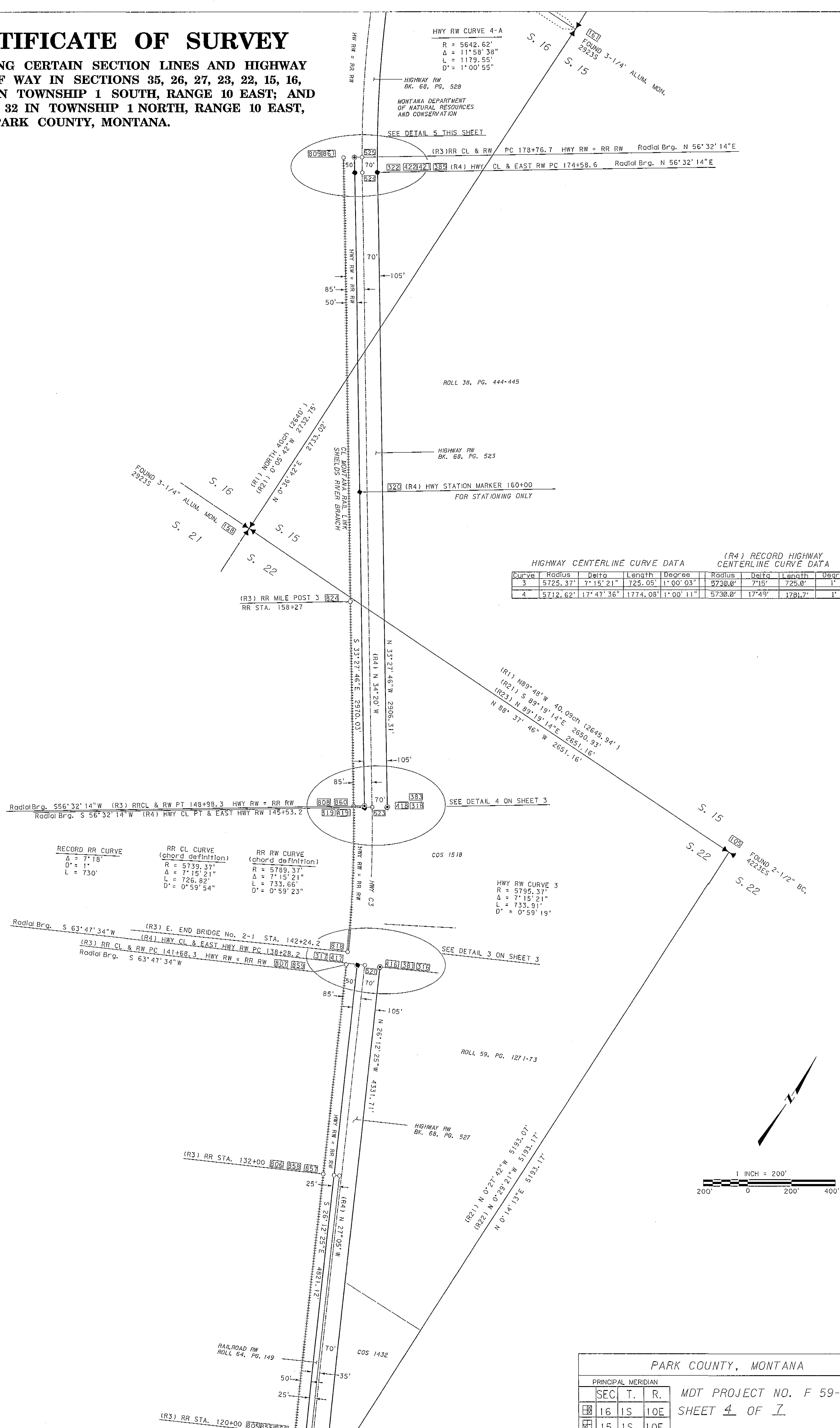
PRINCIPAL MERIDIAN		
SEC.	T.	R.
27	1S	10E
26	1S	10E
35	1S	10E

MDT PROJECT NO. F 59-1(7)1
 SHEET 2 OF 7
 CERTIFICATE OF SURVEY NO. 1999

PREPARED BY MONTANA DEPARTMENT OF TRANSPORTATION
 CONTROL No. 1298 DRAWING No. 1298UCAD001.DGN

CERTIFICATE OF SURVEY

RETRACING CERTAIN SECTION LINES AND HIGHWAY RIGHT OF WAY IN SECTIONS 35, 26, 27, 23, 22, 15, 16, 9, & 4 IN TOWNSHIP 1 SOUTH, RANGE 10 EAST; AND SECTION 32 IN TOWNSHIP 1 NORTH, RANGE 10 EAST, P.M.,M.; PARK COUNTY, MONTANA.



HWY RW CURVE 4-A
 R = 5642.62'
 Δ = 11° 58' 38"
 L = 1179.55'
 D' = 1° 00' 55"

HIGHWAY RW
 BK. 68, PG. 528
 MONTANA DEPARTMENT
 OF NATURAL RESOURCES
 AND CONSERVATION

SEE DETAIL 5 THIS SHEET

(R3) RR CL & RW PC 178+76.7 HWY RW = RR RW Radial Brg. N 56° 32' 14" E
 (R4) HWY CL & EAST RW PC 174+58.6 Radial Brg. N 56° 32' 14" E

ROLL 38, PG. 444-445

HIGHWAY RW
 BK. 68, PG. 523

320 (R4) HWY STATION MARKER 160+00
 FOR STATIONING ONLY

HIGHWAY CENTERLINE CURVE DATA (R4) RECORD HIGHWAY CENTERLINE CURVE DATA

Curve	Radius	Delta	Length	Degree	Radius	Delta	Length	Degree
3	5725.37'	7° 15' 21"	725.05'	1° 00' 03"	5730.0'	7° 15'	725.0'	1°
4	5712.62'	17° 47' 36"	1774.08'	1° 00' 11"	5730.0'	17° 49'	1781.7'	1°

(R3) RR MILE POST 3
 RR STA. 158+27

Radial Brg. S 56° 32' 14" W (R3) RR CL & RW PT 148+98.3 HWY RW = RR RW
 Radial Brg. S 56° 32' 14" W (R4) HWY CL PT & EAST HWY RW 145+53.2

RECORD RR CURVE
 Δ = 7° 18'
 D' = 1°
 L = 730'

RR CL CURVE
 (chord definition)
 R = 5739.37'
 Δ = 7° 15' 21"
 L = 726.82'
 D' = 0° 59' 54"

RR RW CURVE
 (chord definition)
 R = 5789.37'
 Δ = 7° 15' 21"
 L = 733.66'
 D' = 0° 59' 23"

COS 1518

HWY RW CURVE 3
 R = 5795.37'
 Δ = 7° 15' 21"
 L = 733.91'
 D' = 0° 59' 19"

Radial Brg. S 63° 47' 34" W (R3) E. END BRIDGE No. 2-1 STA. 142+24.2
 (R4) HWY CL & EAST HWY RW PC 138+28.2
 (R3) RR CL & RW PC 141+68.3 HWY RW = RR RW
 Radial Brg. S 63° 47' 34" W

SEE DETAIL 3 ON SHEET 3

ROLL 59, PG. 1271-73

HIGHWAY RW
 BK. 68, PG. 527

(R3) RR STA. 132+00

(R21) N 0° 27' 42" W 5193.01'
 (R22) N 0° 28' 21" W 5193.17'
 N 0° 14' 13" E 5193.17'

RAILROAD RW
 ROLL 64, PG. 149

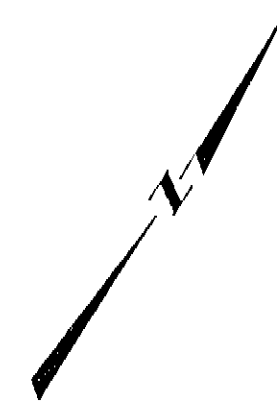
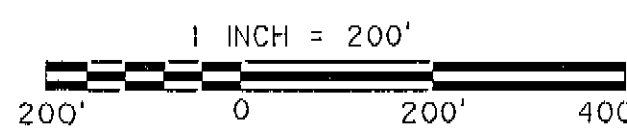
(R3) RR STA. 120+00

PARK COUNTY, MONTANA

PRINCIPAL MERIDIAN		
SEC.	T.	R.
16	1S	10E
15	1S	10E
22	1S	10E

MDT PROJECT NO. F 59-1(7)1
 SHEET 4 OF 7
 CERTIFICATE OF SURVEY NO. 1999

PREPARED BY MONTANA DEPARTMENT OF TRANSPORTATION
 CONTROL No. 1298 DRAWING No. 1298UCAD001.DGN



CORRECTION TO SHEET 4, COS 1999

CERTIFICATE OF SURVEY

RETRACING CERTAIN SECTION LINES AND HIGHWAY RIGHT OF WAY IN SECTIONS 35, 26, 27, 23, 22, 15, 16, 9, & 4 IN TOWNSHIP 1 SOUTH, RANGE 10 EAST; AND SECTION 32 IN TOWNSHIP 1 NORTH, RANGE 10 EAST, P.M.,M.; PARK COUNTY, MONTANA.

HWY RW CURVE 4-A

R = 5642.62'
Δ = 11° 58' 38"
L = 1179.55'
D° = 1° 00' 55"

HIGHWAY RW BK. 68, PG. 528

MONTANA DEPARTMENT OF NATURAL RESOURCES AND CONSERVATION

SEE DETAIL 5 THIS SHEET

(R3) RR CL & RW PC 178+76.7 HWY RW = RR RW Radial Brg. N 56° 32' 14" E

(R4) HWY CL & EAST RW PC 174+58.6 Radial Brg. N 56° 32' 14" E

ROLL 38, PG. 444-445

HIGHWAY RW BK. 68, PG. 523

320 (R4) HWY STATION MARKER 160+00 FOR STATIONING ONLY

HIGHWAY CENTERLINE CURVE DATA

(R4) RECORD HIGHWAY CENTERLINE CURVE DATA

Curve	Radius	Delta	Length	Degree	Radius	Delta	Length	Degree
3	5725.37'	7° 15' 21"	725.05'	1° 00' 03"	5730.0'	7° 15'	725.0'	1°
4	5712.62'	17° 47' 36"	1774.08'	1° 00' 11"	5730.0'	17° 49'	1781.7'	1°

(R3) RR MILE POST 3 824 RR STA. 158+27

(R1) N89° 48' W 40.09ch (2645.94')
(R2) S 89° 19' 14" E 2650.93'
(R3) N 89° 19' 14" E 2651.16'
N 88° 37' 46" W 2651.16'

Radial Brg. S 56° 32' 14" W (R3) RR CL & RW PT 148+98.3 HWY RW = RR RW
Radial Brg. S 56° 32' 14" W (R4) HWY CL PT & EAST HWY RW 145+53.2

RECORD RR CURVE
Δ = 7° 18'
D° = 1°
L = 730'

RR CL CURVE (chord definition)
R = 5739.37'
Δ = 7° 15' 21"
L = 726.82'
D° = 0° 59' 54"

RR RW CURVE (chord definition)
R = 5789.37'
Δ = 7° 15' 21"
L = 733.66'
D° = 0° 59' 23"

COS 1518

HWY RW CURVE 3
R = 5795.37'
Δ = 7° 15' 21"
L = 733.91'
D° = 0° 59' 19"

Radial Brg. S 63° 47' 34" W (R3) E. END BRIDGE No. 2-1 STA. 142+24.2
(R4) HWY CL & EAST HWY RW PC 138+28.2
(R3) RR CL & RW PC 141+68.3 HWY RW = RR RW
Radial Brg. S 63° 47' 34" W

SEE DETAIL 3 ON SHEET 3

ROLL 59, PG. 127-1-73

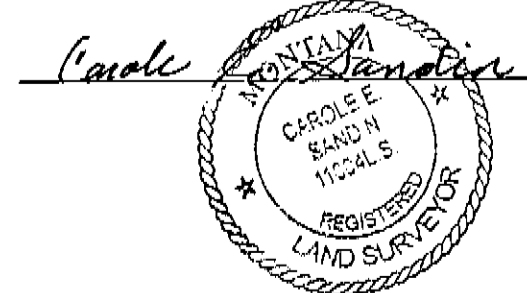
HIGHWAY RW BK. 68, PG. 527

(R3) RR STA. 132+00 806 858 857

(R21) N 0° 27' 42" W 5193.07'
(R22) N 0° 29' 21" W 5193.17'
N 0° 14' 13" E 5193.17'

(R3) RR STA. 120+00 805 855 856

328675 Fee: \$ 5.00 1999 A
PARK COUNTY Filed 09/01/2005 AT 09:31 AM
Denise Nelson, Ck & Redr By (47)



August 23, 2005

PARK COUNTY, MONTANA

PRINCIPAL MERIDIAN		
SEC.	T.	R.
16	1S	10E
15	1S	10E
22	1S	10E

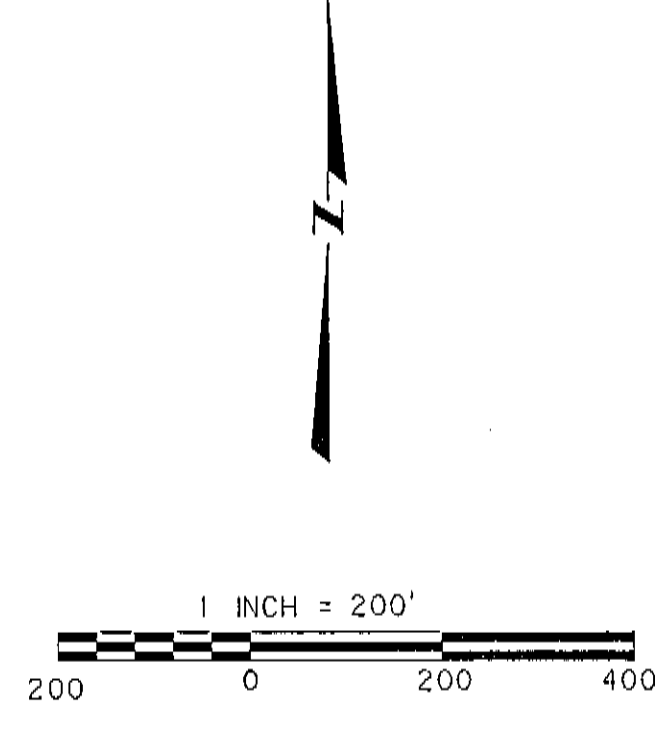
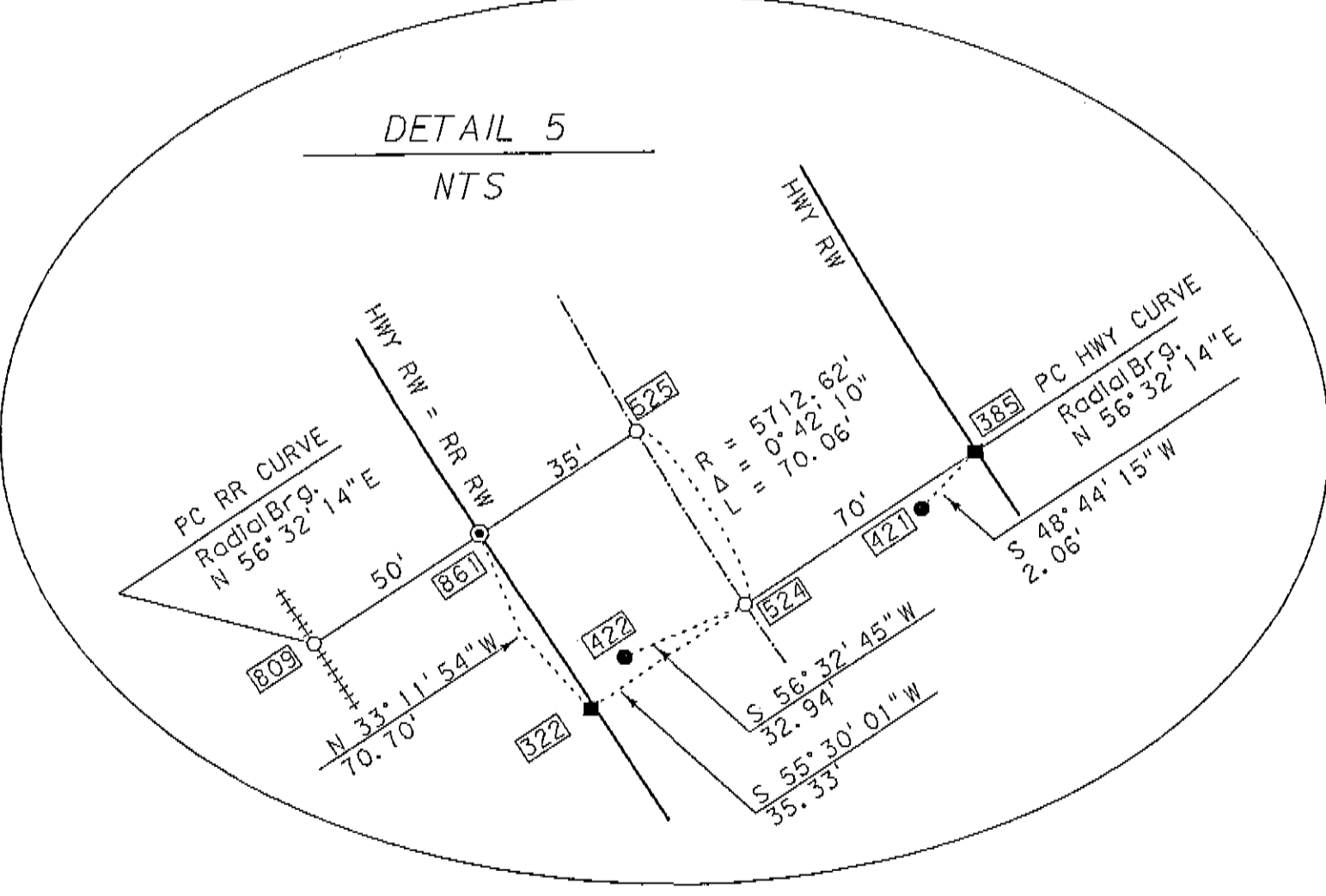
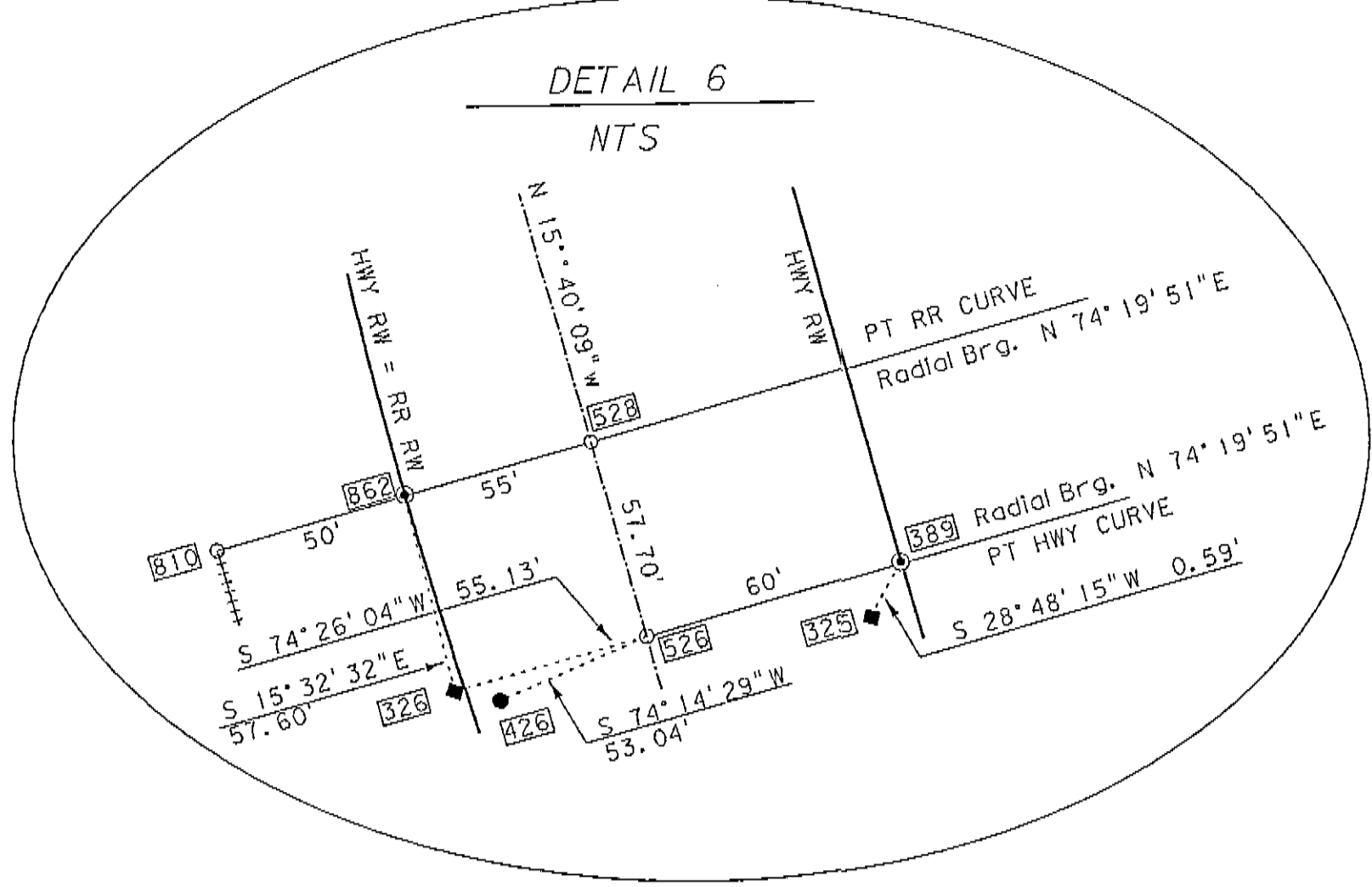
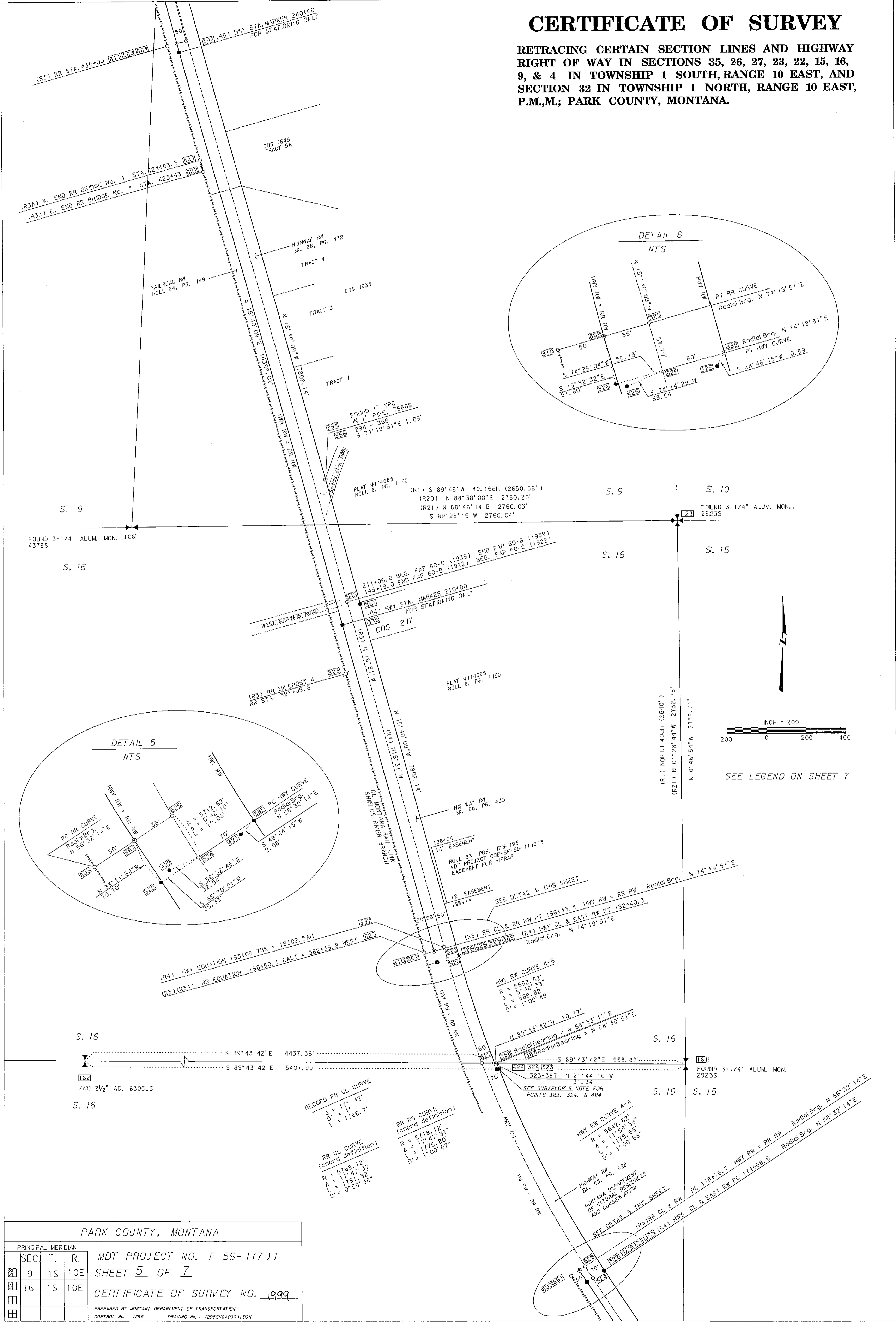
MDT PROJECT NO. F 59-1(7)1
SHEET 4 OF 7 CORRECTED
CERTIFICATE OF SURVEY NO. 1999A

PREPARED BY MONTANA DEPARTMENT OF TRANSPORTATION
CONTROL No. 1298 DRAWING No. 1298SUCADDG 1.DWG

of 1999 A

CERTIFICATE OF SURVEY

RETRACING CERTAIN SECTION LINES AND HIGHWAY RIGHT OF WAY IN SECTIONS 35, 26, 27, 23, 22, 15, 16, 9, & 4 IN TOWNSHIP 1 SOUTH, RANGE 10 EAST, AND SECTION 32 IN TOWNSHIP 1 NORTH, RANGE 10 EAST, P.M.M.; PARK COUNTY, MONTANA.



SEE LEGEND ON SHEET 7

PARK COUNTY, MONTANA

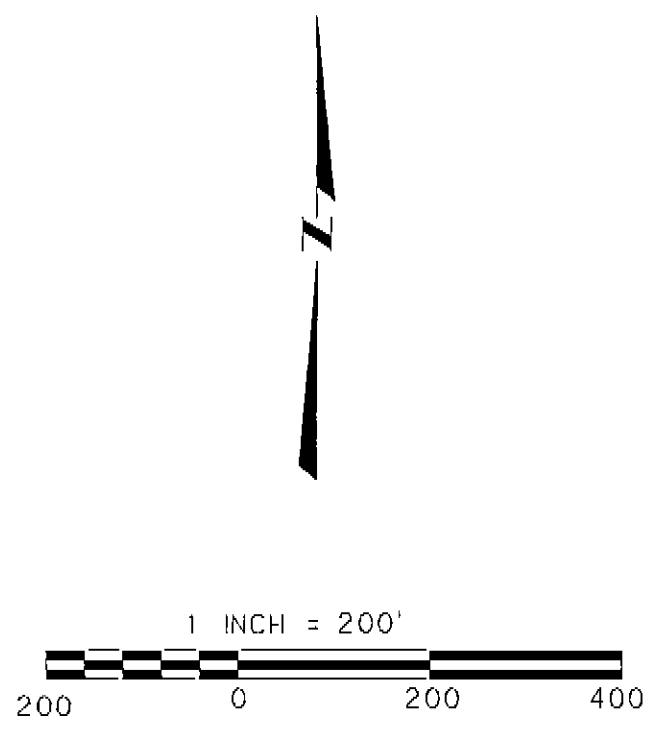
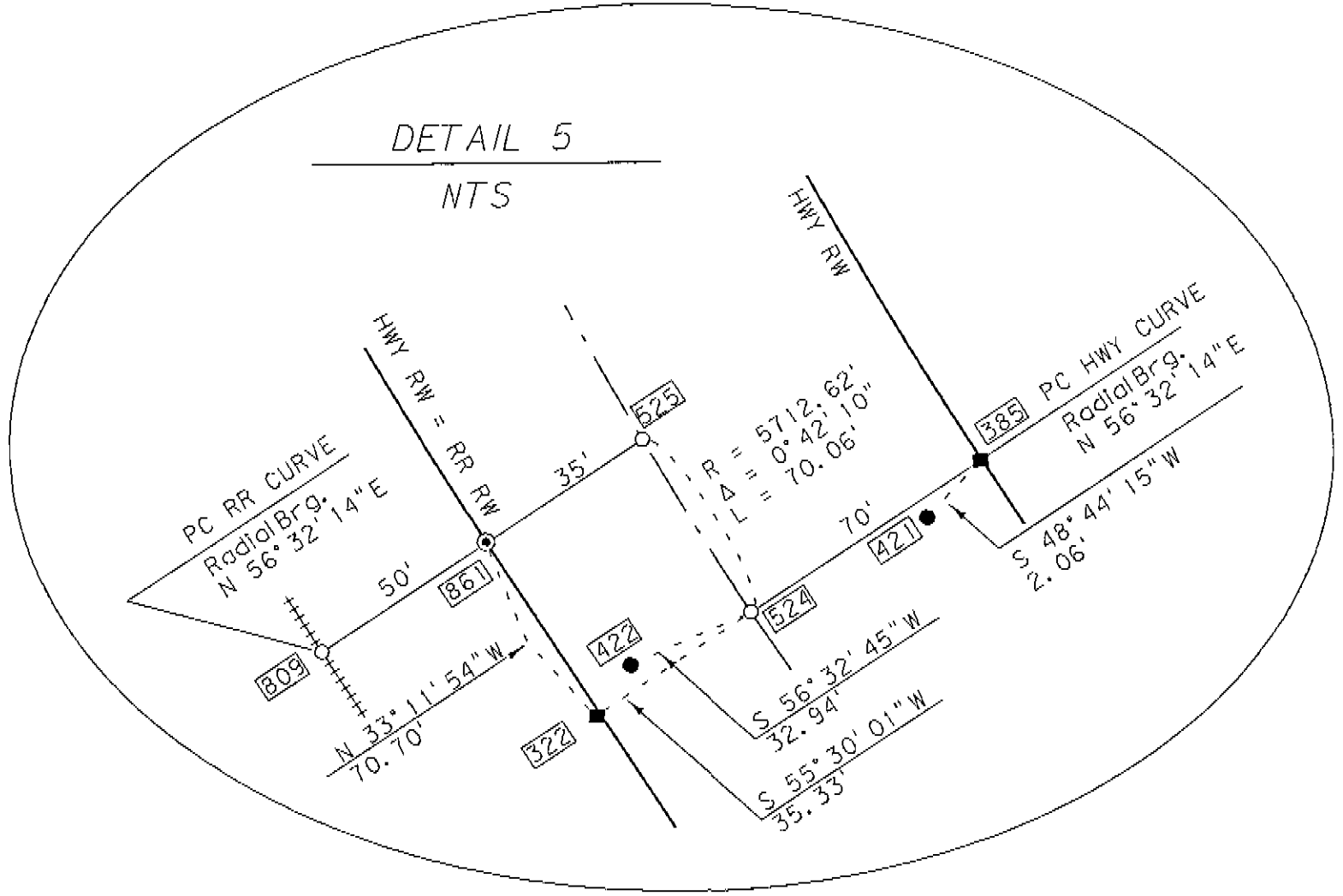
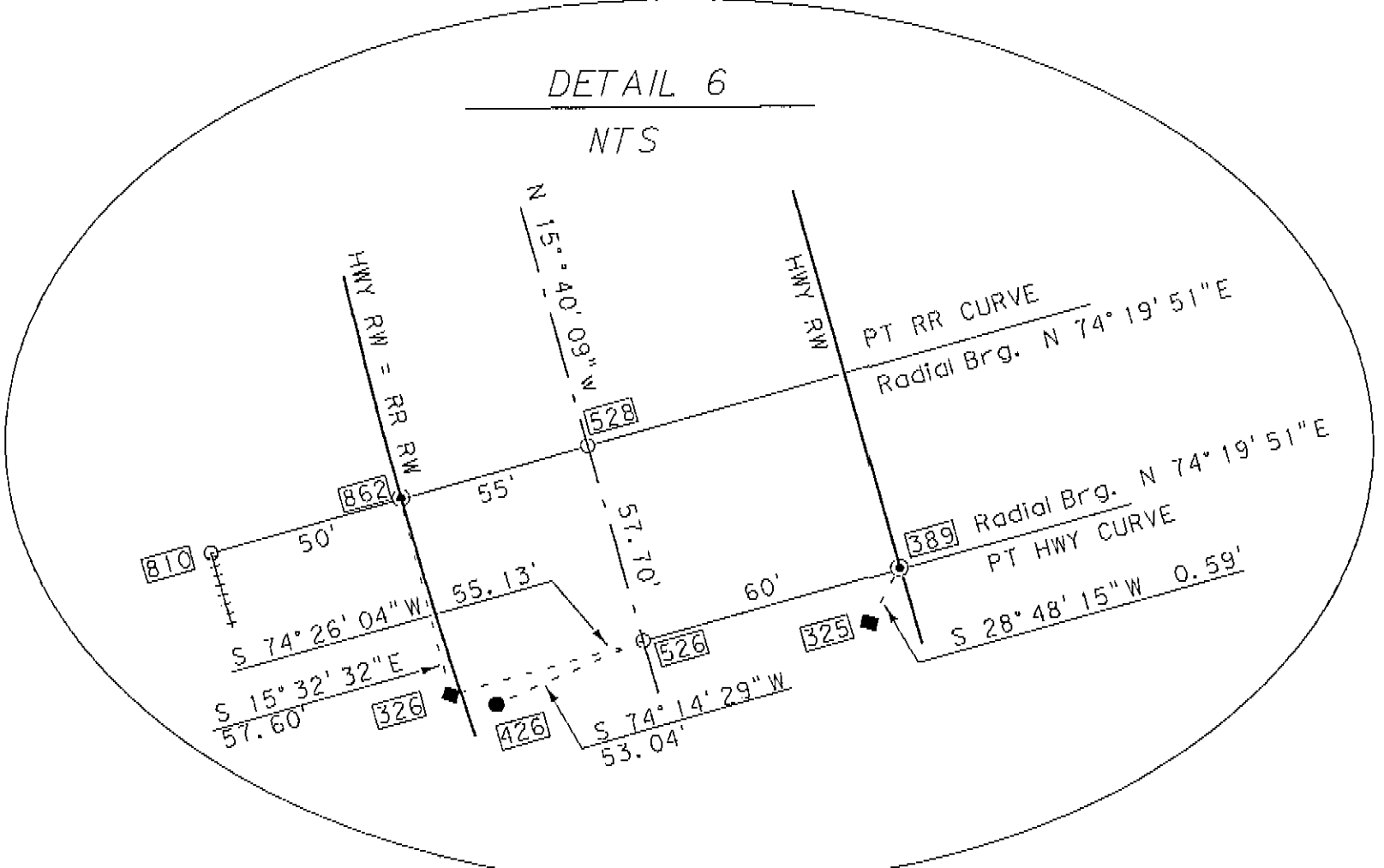
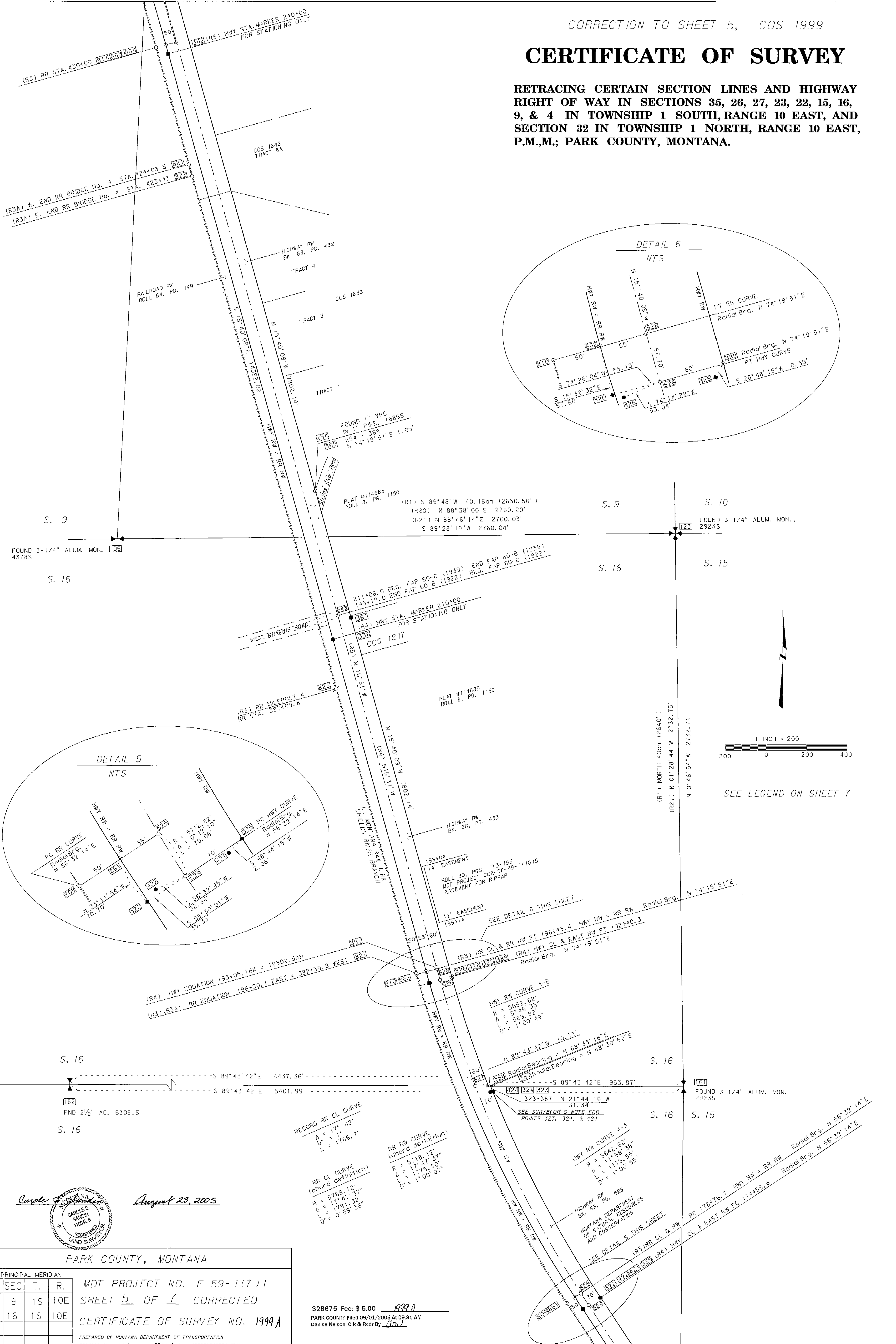
PRINCIPAL MERIDIAN		
SEC.	T.	R.
9	1S	10E
16	1S	10E

MDT PROJECT NO. F 59-1(7)1
SHEET 5 OF 7
CERTIFICATE OF SURVEY NO. 1999

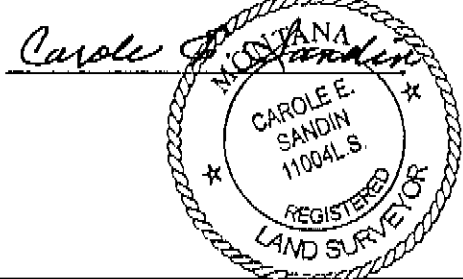
PREPARED BY MONTANA DEPARTMENT OF TRANSPORTATION
CONTROL No. 1298 DRAWING No. 1298UCAD001.DGN

CERTIFICATE OF SURVEY

RETRACING CERTAIN SECTION LINES AND HIGHWAY RIGHT OF WAY IN SECTIONS 35, 26, 27, 23, 22, 15, 16, 9, & 4 IN TOWNSHIP 1 SOUTH, RANGE 10 EAST, AND SECTION 32 IN TOWNSHIP 1 NORTH, RANGE 10 EAST, P.M.M.; PARK COUNTY, MONTANA.



SEE LEGEND ON SHEET 7



August 23, 2005

PARK COUNTY, MONTANA

PRINCIPAL MERIDIAN		
SEC.	T.	R.
9	1S	10E
16	1S	10E

MDT PROJECT NO. F 59-1(7)1
SHEET 5 OF 7 CORRECTED
CERTIFICATE OF SURVEY NO. 1999A

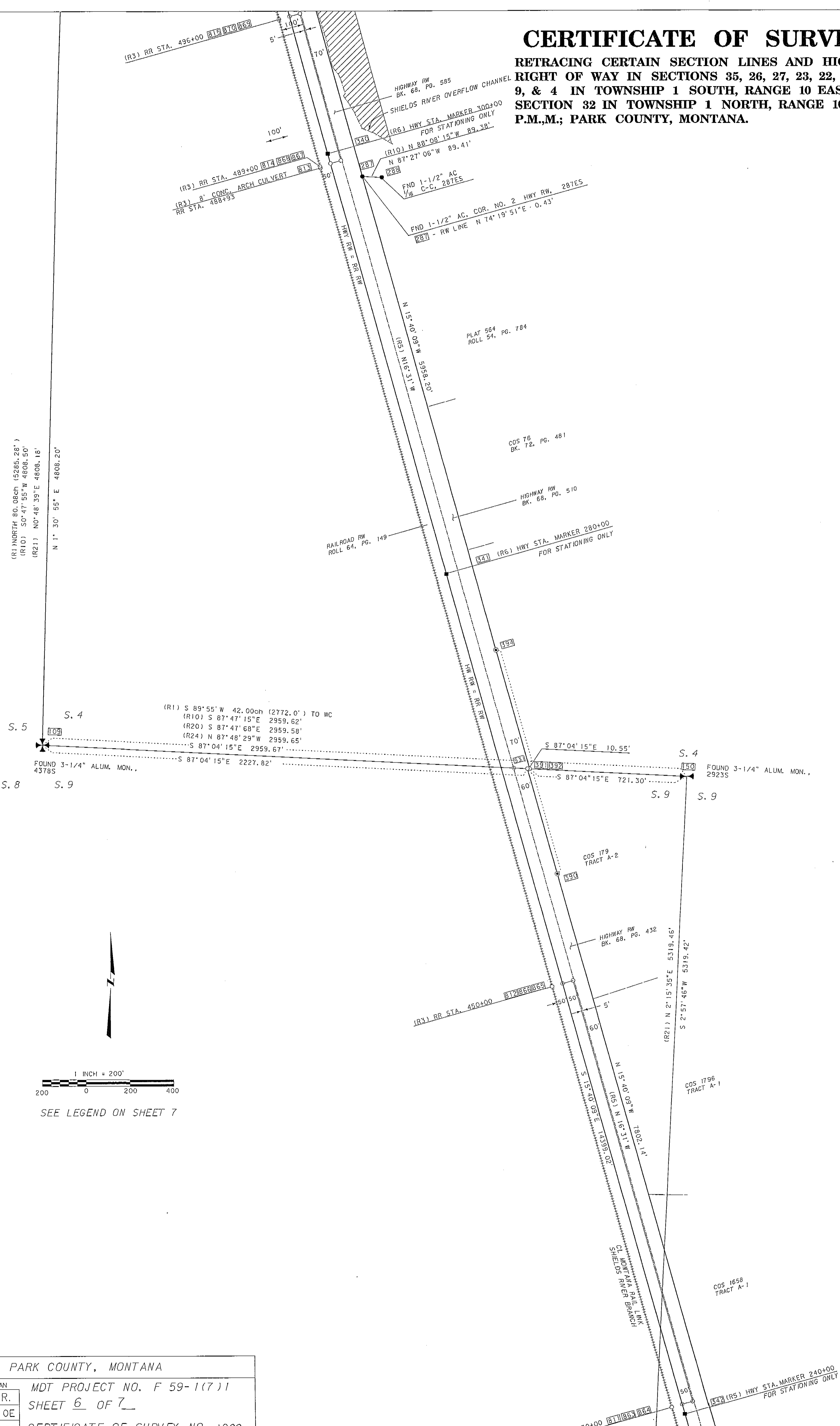
328675 Fee: \$ 5.00 1999A
PARK COUNTY Filed 09/01/2005 At 09:31 AM
Denise Nelson, Clk & Recr By (lm)

PREPARED BY MONTANA DEPARTMENT OF TRANSPORTATION
CONTROL No. 1298 DRAWING No. 1298SUCADD1.DGN

015 1999A

CERTIFICATE OF SURVEY

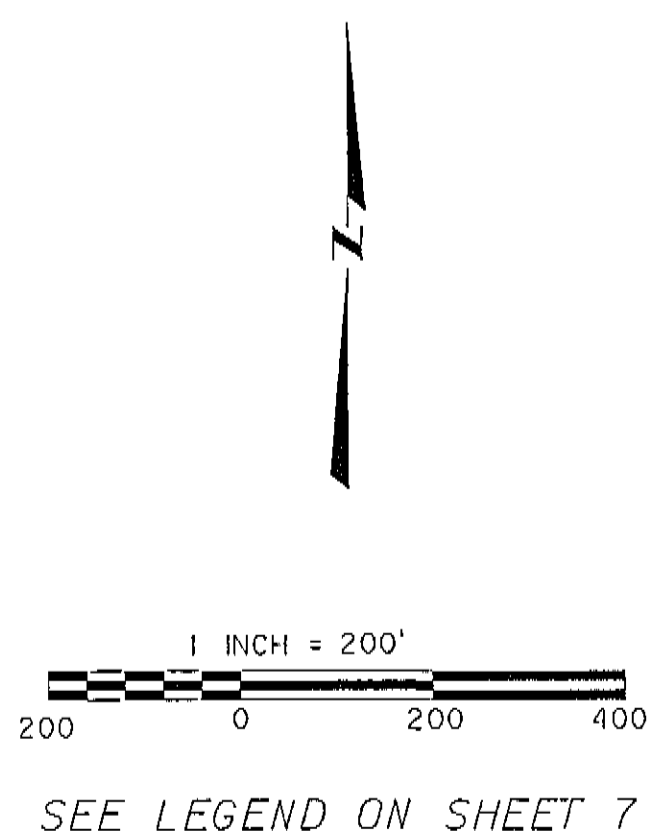
RETRACING CERTAIN SECTION LINES AND HIGHWAY RIGHT OF WAY IN SECTIONS 35, 26, 27, 23, 22, 15, 16, 9, & 4 IN TOWNSHIP 1 SOUTH, RANGE 10 EAST; AND SECTION 32 IN TOWNSHIP 1 NORTH, RANGE 10 EAST, P.M.M.; PARK COUNTY, MONTANA.



(R1) NORTH 80.08ch (5285.28')
 (R10) S 0° 47' 55" W 4608.50'
 (R21) N 0° 48' 39" E 4808.16'
 N 1° 30' 55" E 4808.20'

S. 4
 (R1) S 89° 55' W 42.00ch (2772.0') TO WC
 (R10) S 87° 47' 15" E 2959.62'
 (R20) S 87° 47' 68" E 2959.58'
 (R24) N 87° 48' 29" W 2959.65'
 S 87° 04' 15" E 2959.67'
 S 87° 04' 15" E 2227.82'
 FOUND 3-1/4" ALUM. MON., 43785

S. 5
 S. 8
 S. 9



PARK COUNTY, MONTANA		
PRINCIPAL MERIDIAN		
SEC.	T.	R.
4	15	10E
9	15	10E
MDT PROJECT NO. F 59-1(7)1 SHEET 6 OF 7		
CERTIFICATE OF SURVEY NO. 1999		
PREPARED BY MONTANA DEPARTMENT OF TRANSPORTATION CONTROL No. 1298 DRAWING No. 1298SUCAD001.DGN		

CERTIFICATE OF SURVEY

RETRACING CERTAIN SECTION LINES AND HIGHWAY RIGHT OF WAY IN SECTIONS
35, 26, 27, 23, 22, 15, 16, 9, 4 IN TOWNSHIP 1 SOUTH, RANGE 10 EAST; AND SECTION 32
IN TOWNSHIP 1 NORTH, RANGE 10 EAST, P.M.M.; PARK COUNTY, MONTANA.

LEGEND

- | | | |
|---|--|--|
| <ul style="list-style-type: none"> ✚ SECTION CORNERS FOUND ✚ QUARTER CORNERS FOUND ✚ CLOSING CORNERS FOUND ■ FOUND 4X4 CONCRETE MONUMET. ⊙ SET 3/8" REBAR W/ 2" ALUMN. CAP ⊙ STAMPED "11004LS 2005" ● FOUND MONUMENT AS DESCRIBED ○ COMPUTED POINT, NOTHING FOUND OR SET COS CERTIFICATE OF SURVEY MDT MONTANA DEPARTMENT OF TRANSPORTATION (R) RECORD INFORMATION | <ul style="list-style-type: none"> LS LAND SURVEYOR RW RIGHT OF WAY FND FOUND MON. MONUMENT CONC. CONCRETE ALUM. ALUMINIUM CL CENTERLINE STA. STATION INCH FEET SEC. /S. SECTION ch. CHAINS PT POINT OF TANGENCY PC POINT OF CURVATURE | <ul style="list-style-type: none"> [01] POINT No. BK. BOOK PG. PAGE AC ALUMINIUM CAP RR RAILROAD HWY HIGHWAY NTS NOT TO SCALE |
|---|--|--|

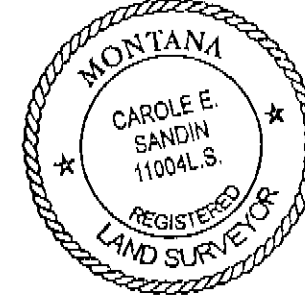
- ===== RAILROAD CENTERLINE
- RAILROAD RIGHT OF WAY LINE
- HIGHWAY CENTERLINE
- HIGHWAY RIGHT OF WAY LINE
- APPROXIMATE BOUNDARY LINE

CERTIFICATE OF SURVEYOR

Carole E. Sandlin Aug. 5, 2005
Carole E. Sandlin, 11004LS

CERTIFICATE OF EXAMINING LAND SURVEYOR

Montana Registration No. _____
Date _____



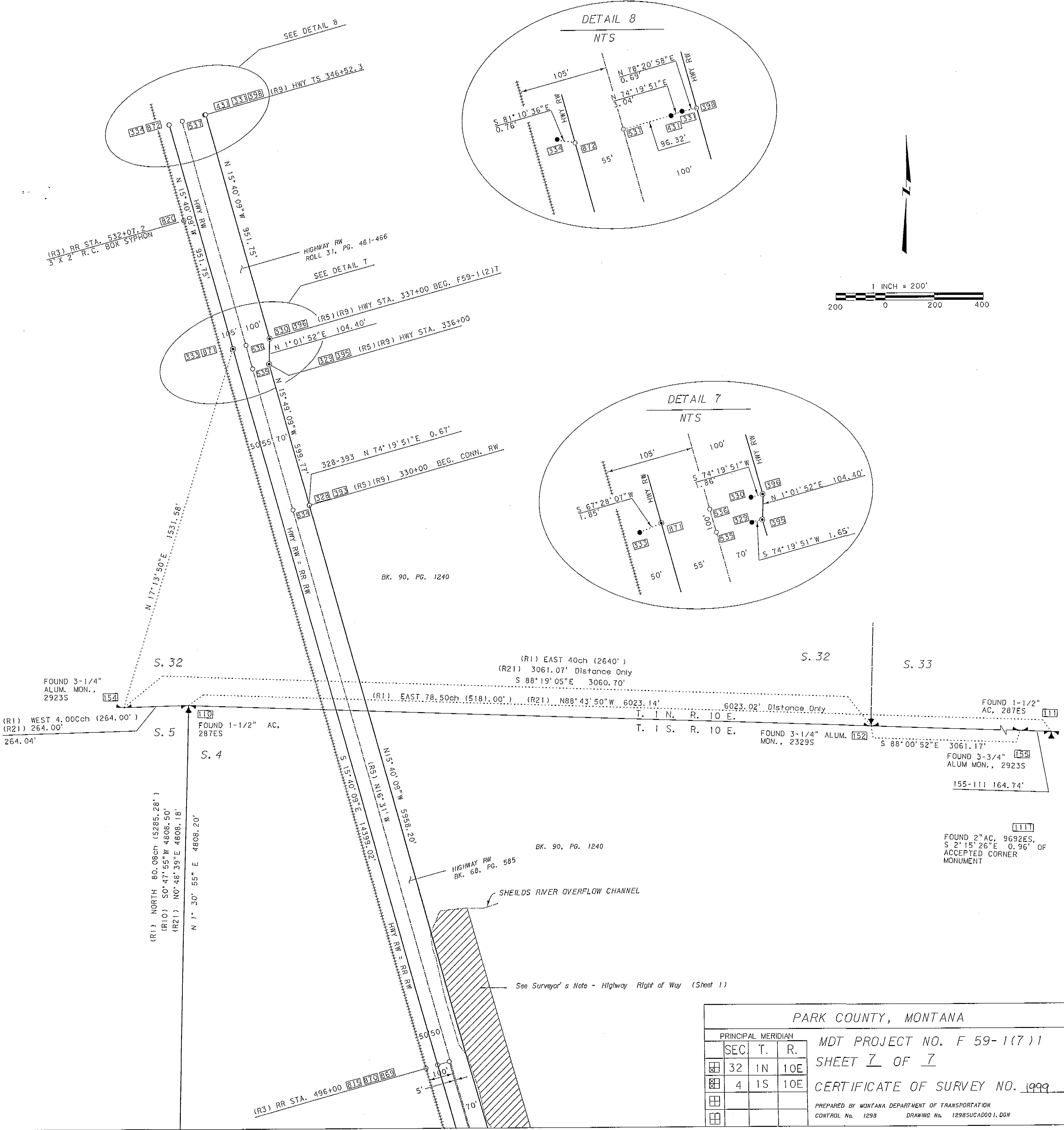
CERTIFICATE OF FILING

FILED ON THE 11th DAY OF August, 2004, A.D.

AT 3:00 O'CLOCK p.m.

BY *Sharon Johnson, Deputy Clerk*
COUNTY CLERK & RECORDER

DOCUMENT NO. 388118



PRINCIPAL MERIDIAN		
SEC	T.	R.
32	1N	10E
4	1S	10E

PARK COUNTY, MONTANA
MDT PROJECT NO. F 59-1(7)1
SHEET 7 OF 7
CERTIFICATE OF SURVEY NO. 1999
PREPARED BY MONTANA DEPARTMENT OF TRANSPORTATION
CONTROL No. 129B DRAWING No. 1298UCAD001.DGN