

DETAIL A

Sheet 2 of 2

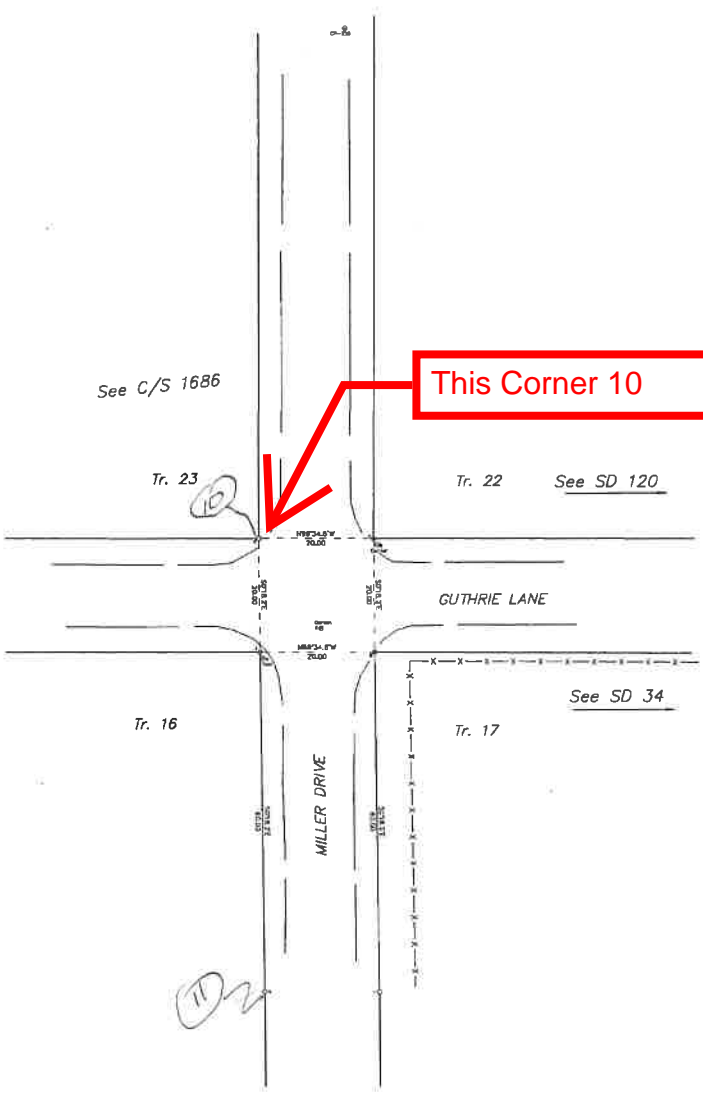
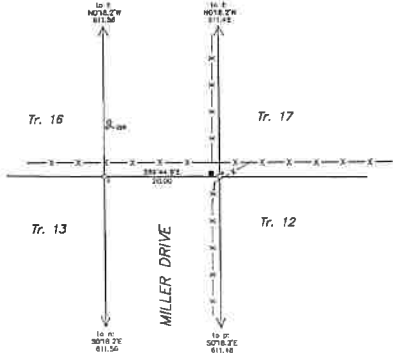


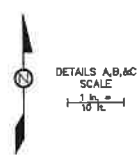
TABLE OF COORDINATES

MONUMENT	DESCRIPTION	EASTING	NORTHING
a	State Surv. Kopp	11833.62	10685.06
b	Center peg	11822.48	10705.64
c	unmarked	11833.47	10705.08
d	Corner brass cap	11807.75	10685.82
e	Trail peg	11822.53	10685.64
f	unmarked	11803.84	10685.18
g	unmarked	11803.47	10745.18
h	State Surv. Kopp	11743.83	10685.48
i	State Surv. Kopp	11743.47	10705.48
j	State Surv. Kopp	11182.58	10858.41
k	State Surv. Kopp	11181.88	10705.41
l	State Surv. Kopp	10600.53	10711.55
m	State Surv. Kopp	10600.52	10711.55
n	unmarked	10561.53	10811.85
o	unmarked	10560.52	10711.55
p	unmarked	10564.14	10838.54
q	unmarked	10560.53	10811.78
r	unmarked	10560.53	10711.55
s	unmarked	10560.52	10711.55
t	Corner brass cap	8450.82	10687.12
CP-218	2nd N&P	11182.58	10705.47
CP-220	2nd N&P	11202.48	10685.03

DETAIL B



DETAIL C



- LEGEND
- Found monument
 - Surv. Kap. set. 1914 survey
 - Unmarked corner
 - 70d nail and washer
 - Power pole
 - Ownership or tract boundary
 - - - The line only
 - - - - - Fence
 - ==== Road

