

CERTIFICATE OF SURVEY

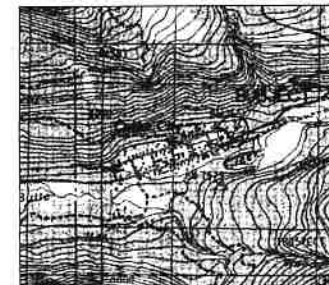
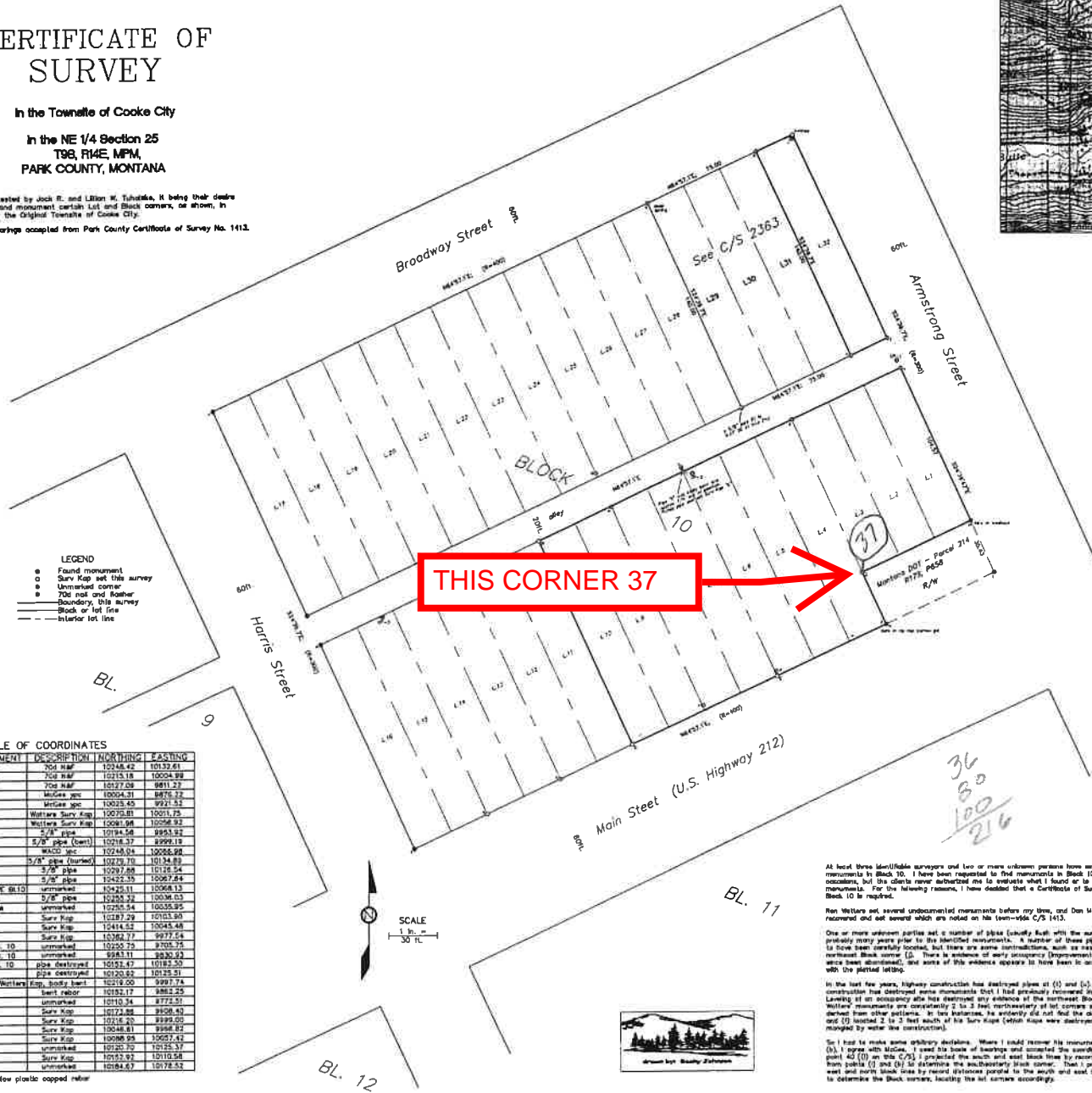
In the Townsite of Cooke City

In the NE 1/4 Section 25
T9S, R14E, M1M,
PARK COUNTY, MONTANA

Survey requested by Jack R. and Lilian M. Tufelko, it being their desire to identify and monument certain Lot and Block corners, as shown, in Block 10 of the Original Townsite of Cooke City.

Base of bearings accepted from Park County Certificate of Survey No. 1413.

17437



LOCATION

- LEGEND**
- Found monument
 - Surv Kap set this survey
 - Unmoneted corner
 - 70% nail and washer
 - Boundary, this survey
 - Block or lot line
 - Interior lot line

TABLE OF COORDINATES

MONUMENT	DESCRIPTION	NORTHING	EASTING
CP-1	70% nail	10246.42	10132.41
CP-2	70% nail	10215.18	10004.98
CP-3	70% nail	10227.04	9811.27
a	McGee cap	10004.31	9476.72
b	McGee cap	10025.45	9721.52
c	Walters Surv Kap	10070.81	10011.25
d	Walters Surv Kap	10091.98	10056.92
e	5/8" pipe	10184.54	9951.02
f	5/8" pipe (down)	10216.37	8999.19
g	WACO nec	10245.04	10055.98
h	5/8" pipe (down)	10229.70	10134.83
i	5/8" pipe	10291.68	10124.54
j	5/8" pipe	10422.35	10067.84
k-line NE 8/10	unmarked	10425.11	10058.13
l	5/8" pipe	10295.92	10036.03
m-line	unmarked	10295.54	10035.95
n	Surv Kap	10187.29	10151.90
o	Surv Kap	10414.55	10045.48
p	Surv Kap	10362.77	9977.54
q-line N 10	unmarked	10295.70	9705.75
r-line N 10	unmarked	998.11	9830.93
s-SE N 10	pipe destroyed	10152.47	10182.50
t	pipe destroyed	10120.62	10125.51
v	Walters Exp. 100% bent	10219.00	9997.74
w	bent nail	10191.17	9862.25
A	unmarked	10110.34	8772.51
B	Surv Kap	10172.88	8958.45
C	Surv Kap	10414.55	8999.00
D	Surv Kap	10046.81	9986.82
E	Surv Kap	10096.95	10027.44
F	unmarked	10295.92	10125.37
G	Surv Kap	10552.91	10110.58
H	unmarked	10184.67	10178.52

ppc-yellow plastic capped nail

THIS CORNER 37

At least three (3) fully trained and two or more unknown persons have set permanent monuments to Block 10. I have been requested to find monuments to Block 10 in several occasions, but the clients never authorized me to evaluate what I found or to establish monuments. For the following reasons, I have decided that a Certificate of Survey for Block 10 is required.

Ren Walters set several unmonumented monuments before my time, and Dan McGee removed and set several which are noted on his 1906-1906 C/S 1413.

One or more unknown parties set a number of pipes (usually 8" with the surface), probably many years prior to the identified monuments. A number of these pipes appear to have been carefully located, but there are some contradictions, such as near the northeast block corner (5). There is evidence of early occupancy (improvements that have since been abandoned), and some of this evidence appears to have been in accordance with the platred lotting.

In the last few years, highway construction has destroyed pipes at (1) and (2). Water line construction has destroyed some monuments that I had previously monumented in the alley. Lacking an occupancy site has destroyed any evidence of the northwest block corner. Walters' monuments are consistently 2 to 3 feet northwesterly of lot corners as made by derived from other systems. In two instances, he evidently did not find the old pipes (4) and (10) located 2 to 3 feet south of his true north (which shape were destroyed or changed by water line construction).

So I had to make some arbitrary decisions. Where I could recover his monuments (6) and (8), I agree with McGee. I used the base of bearings and accepted the southerly line of the point 42 (1) on this C/S. I projected the south and east block lines by record distance from points (1) and (4) to determine the southerly block corner. Then I projected the west and north block lines by record distances parallel to the south and east block lines to determine the block corners, locating the lot corners accordingly.

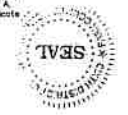
CERTIFICATE OF EXEMPTION
I hereby certify that this Certificate of Survey is exempt from subdivision review. This is an Informational Certificate of Survey only. No new tracts are created, and no property lines are changed.

Henry A. Rota
Henry A. Rota RLS 37185

STATE OF MONTANA
County Park

On this 17th day of May, 2012, before me, a Notary Public for the State of MONTANA, personally appeared Henry A. Rota, known to me to be the person whose name is subscribed to the Certificate of Exemption above, and acknowledged to me that he executed the same.

Angie Howe
Angie Howe
Notary Public for the State of MONTANA
Residing at Missoula, Montana
My commission expires December 31, 2012.



PARK COUNTY PLANNING BOARD
Examined and recommended for approval.
Dated this 17th day of May, 2012.
N/A
Chairman
Park County Planning Board

PARK COUNTY BOARD OF COUNTY COMMISSIONERS
I, the Chairman of the Board of County Commissioners, do hereby certify that this Certificate of Survey has been duly reviewed, and has been found to be exempt from the requirements of the Subdivision and Platting Act, Section 78-3-101 et seq. M.C.A. and the Park County Subdivision Regulations.
Dated this 17th day of May, 2012.
N/A
Chairman
Board of County Commissioners

CERTIFICATE OF COUNTY TREASURER
I, Henry A. Rota, Treasurer of Park County, Montana, do hereby certify that the accompanying Certificate of Survey has been duly examined and that no real property taxes assessed and levied on the land to be divided are delinquent.
Dated this 17th day of May, 2012.
Henry A. Rota
County Treasurer



in COOKE CITY

1/4	S	T	R
<input checked="" type="checkbox"/>	25	9S	14E

State of Montana
PARK COUNTY
Filed this 17th day of May, 2012.
At COOKE CITY, MT.
Henry A. Rota
County Clerk & Recorder
Document No. 17-8500

STATE OF MONTANA
Park County
I, Henry A. Rota, Registered Land Surveyor No. 3265, hereby certify that I made the survey shown on the attached certificate in July 2011, and that this survey is correctly shown and described herein.
Henry A. Rota
Date April 30, 2012

