

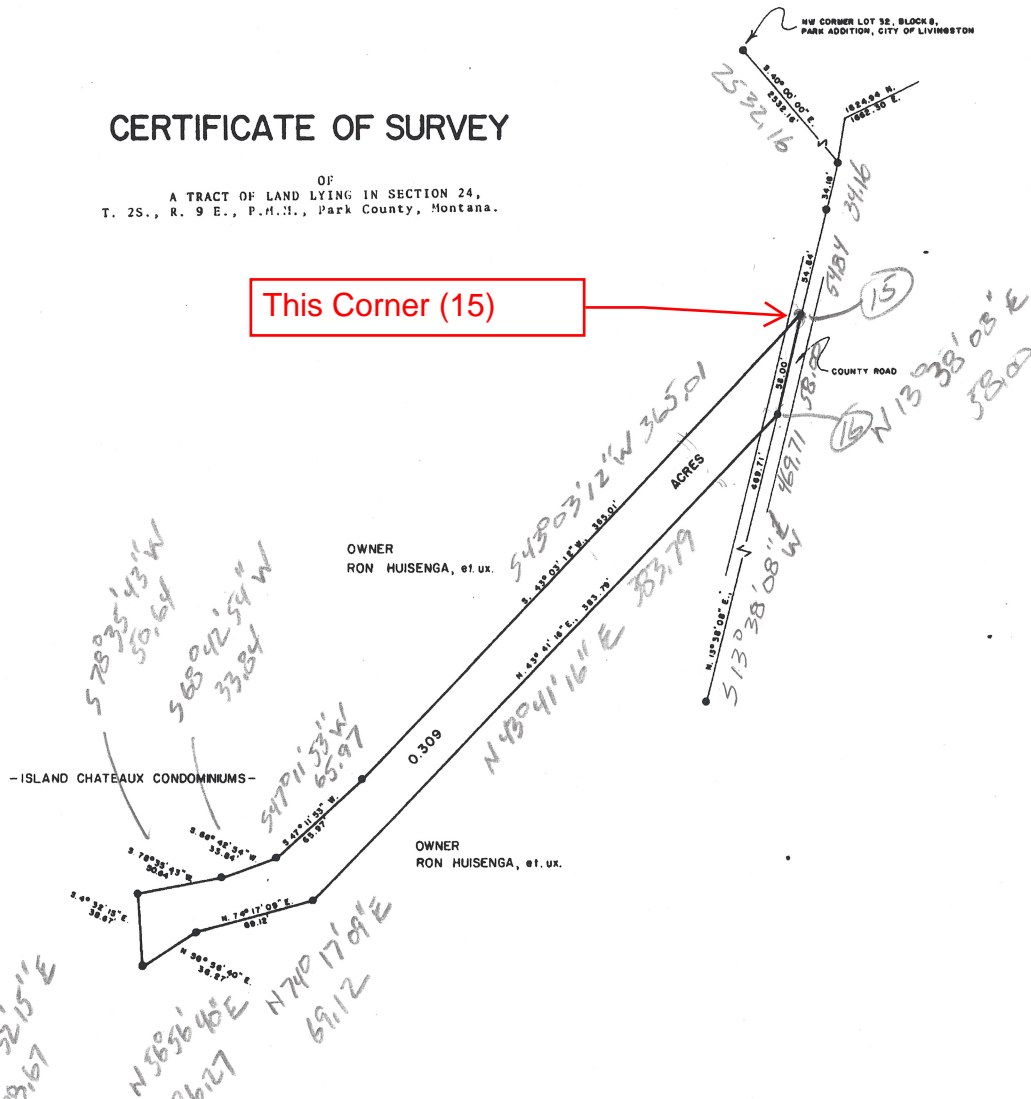
005 35 (I)

6/5/74

CERTIFICATE OF SURVEY

OF
A TRACT OF LAND LYING IN SECTION 24,
T. 25., R. 9 E., P.M.H., Park County, Montana.

This Corner (15)



OWNER
RON HUISENGA, et ux.

OWNER
RON HUISENGA, et ux.

- ISLAND CHATEAUX CONDOMINIUMS -

DESCRIPTION

A tract of land lying section 24, T. 25., R. 9E., P.M.H. Park County, Montana, which tract is more particularly described as follows:

From the northwest corner of lot 32, Block 8, Park Addition to the City of Livingston, Montana, run S. 40° 00' 00" E. along the East line of Ninth Street for 2532.16 feet; thence run S. 13° 38' 08" W. for 89.00 feet to the point of beginning of the herein described tract. From said point of beginning run S. 43° 03' 12" W. for 365.01 feet; thence run S. 47° 11' 53" N. for 65.97 feet; thence run S. 68° 42' 54" W. for 33.84 feet; thence run S. 78° 35' 43" W. for 50.64 feet; thence run S. 4° 32' 15" E. for 38.67 feet; thence run N. 56° 56' 40" E. for 36.27 feet; thence run N. 74° 17' 09" E. for 69.12 feet; thence run N. 43° 41' 16" E. for 383.79 feet; thence run N. 13° 38' 08" E. for 58.00 feet to the point of beginning. Containing 0.309 acres.

COUNTY COMMISSIONERS CERTIFICATE OF APPROVAL

Approved this 5th day of June 1974
County of Park, State of Montana.

By: [Signature]
Chairman, Board of County/Commissioners

SURVEYORS CERTIFICATE

I hereby certify that the plat hereon delineated is a true and correct representation of a recent survey made and platted under my direction, January 30, 1974.

[Signature]
Louis V. Tout, Registration No. 2358 S

005 35



● - INDICATES IRON PIN SET OR FOUND UNLESS OTHERWISE NOTED.

132822
 5th
 June 5 1974
 12:02
 [Signatures]
 132822 - 50 P



LT & ASSOCIATES
Land Surveying
Bozeman, Montana

