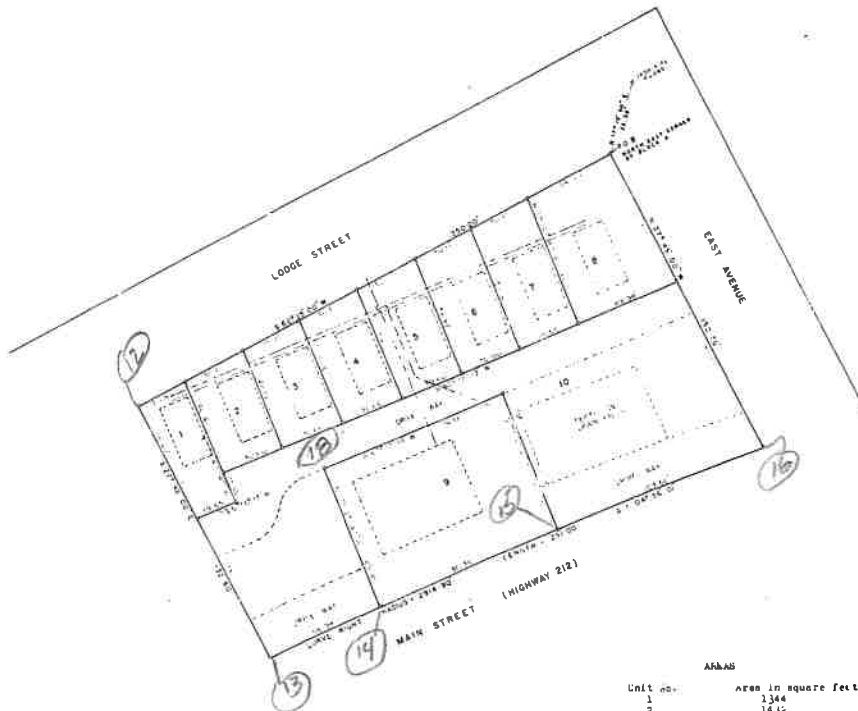


12-16, 18

TIMBERLINE LODGES SUBDIVISION
SITUATED IN BLOCK A OF THE ORIGINAL TOWNSITE OF SILVER GATE
IN THE SW1/4NE1/4 OF SECTION 33, T. 9 S., R. 14 E., P.M.M.
PARK COUNTY, MONTANA
SURVEYED FOR LARRY HINCK
SCALE 1" = 30'



DESCRIPTION OF SURVEY

Beginning at the north east corner of Block A of the original Townsite of Silver Gate, Montana, thence along the boundaries of said Block A 86°15'00" 250.00 feet, thence 327°45'00" 132.00 feet, thence along a non-tangent curve to the right of 2914.70 feet radius for a distance of 251.30 feet, thence 827°45'00" 152.70 feet to the point of beginning and containing 35.415 square feet or 0.813 acres, along with and subject to any existing easements.

Unit no.	Area in square feet
1	1344
2	1436
3	1509
4	1527
5	1666
6	1743
7	1823
8	3018
9	6244
10	15051
TOTAL	35415 (0.813 acres)

LEGEND

Small circle denotes points marked with a survey on a 5/8" iron rod and stamped with identifying data, except as noted.

--- CURVE LINES
 --- SPLIT LINES

STATE OF MONTANA)
) ss.
 County of Park)

I, Ronald A. Walters, Registered Land Surveyor of Fiehtall, Montana, Certificate of Registration No. 978a, do hereby certify that on August 5, 1975 I surveyed the tract of land described on the accompanying plat and that said plat correctly shows the position of said tract on the ground together with the courses and distances of the boundaries thereof.

Dated this 21st day of August, 1975.

Ronald A. Walters
 RONALD A. WALTERS, LAND SURVEYOR

EXAMINED AND APPROVED BY THE PARK COUNTY PLANNING BOARD,
 Date 12-6-75 *Walter H. ...*
 CHAIRMAN

EXAMINED AND APPROVED BY THE PARK COUNTY BOARD OF COMMISSIONERS
 Date Jan 13 1976 *...*
 CHAIRMAN

Acc. # 134122
 Filed this 12-16 1975
 Deft. 1976
 H.H.C. ...
 Discrepancy ...
 9/2/76

6-84