

CERTIFIED LAND CORNER RECORDATION

DESCRIPTION OF CORNER EVIDENCE FOUND, AND ORIGINAL RECORD (IF KNOWN)

No evidence of original monument found. (Record: North between sec. 31 & 32, Va. 18°E., 80.00 chs., Set a sandstone 14 X 12 X 4 ins. 10 in. in the ground, for cor. to sec. 29, 30, 31, 32 marked with 5 notches on east and 1 on south edges.)

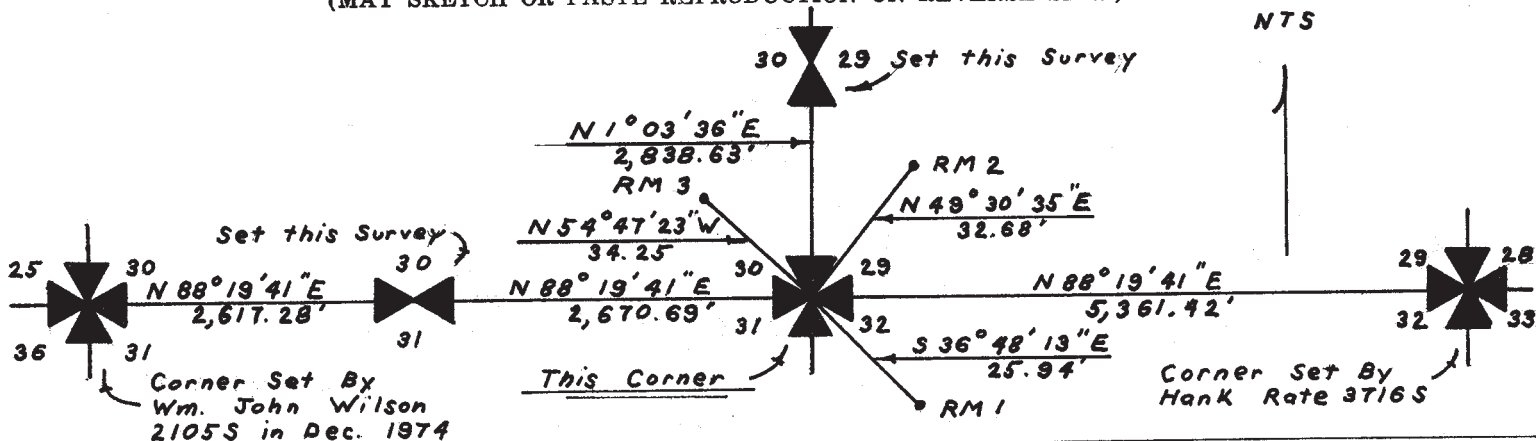
DESCRIPTION OF MONUMENT AND ACCESSORIES ESTABLISHED TO PERPETUATE THE ORIGINAL LOCATION OF THIS CORNER:

Date of work: 6-7-77

I relocate this corner by proportionate measurement from the section corner common to sections 25, 30, 31, and 36, T.1N., R.9 & 10E., relocated by Wm. John Wilson 2105 S. in Dec. 1974, and the section corner common to sections 28, 29, 32, and 33, T.1N., R. 10E., relocated by Henry A. Rate 3716 S, C/S No. 184 on file in Park County Clerk and Recorder's office. I set a 5/8" diameter X 24" long rebar with a stamped "Surv Kap" as corner and 3 R.M.'s as follows:

- R.M. No.1 bears S 36° 48' 13" E (25.94')
- R.M. No.2 bears N 49° 30' 35" E (32.68')
- R.M. No.3 bears N 54° 47' 23" W (34.25')

SKETCH, WITH COURSE AND DISTANCE TO ADJACENT CORNERS IF DETERMINED IN THIS SURVEY. (MAY SKETCH OR PASTE REPRODUCTION ON REVERSE SIDE.)



Surveyor's Seal



I, Carl Lindeblad certify that the information shown herein is true and correct.

Carl Lindeblad

Signature of Ground Party Chief

I, Thomas J. Hallin certify that I have carefully performed or reviewed the work done on the diagrammed corner as reported on this recordation form and approve the same.

Thomas J. Hallin

Signature of Surveyor

DIAGRAM OF CORNER:

N. Section Corner



TIN, R10E

= Corner recorded on the sheet

287 E.S.
Registration Number

146219

Office of Clerk and Recorder, County of Park

This "corner record" was filed for record on the 9th day of August 1977, was noted on the cross-index plat and is assigned page No. 19, in book No. one

Margaret Tronical
County Official

Fee - 50 cents

Cross Index No. V-5 T. 1N R. 10E Mer.