

CERTIFIED LAND CORNER RECORDATION

DESCRIPTION OF CORNER EVIDENCE FOUND, AND ORIGINAL RECORD (IF KNOWN)

Not Found:

Set a sandstone 16x11x5 inches 11 inches in ground for corner to Sections 26, 27, 34 and 35, marked 1 notch on S. and 2 on E. edges and raised a mound of stone alongside.

Found:

A 5/8" Rebar in pile of rock in east edge of old county road for Sections 26, 27, 34 and 35, T. 1 S., R. 10 E., P.M.M.

DESCRIPTION OF MONUMENT AND ACCESSORIES ESTABLISHED TO PERPETUATE THE ORIGINAL LOCATION OF THIS CORNER:

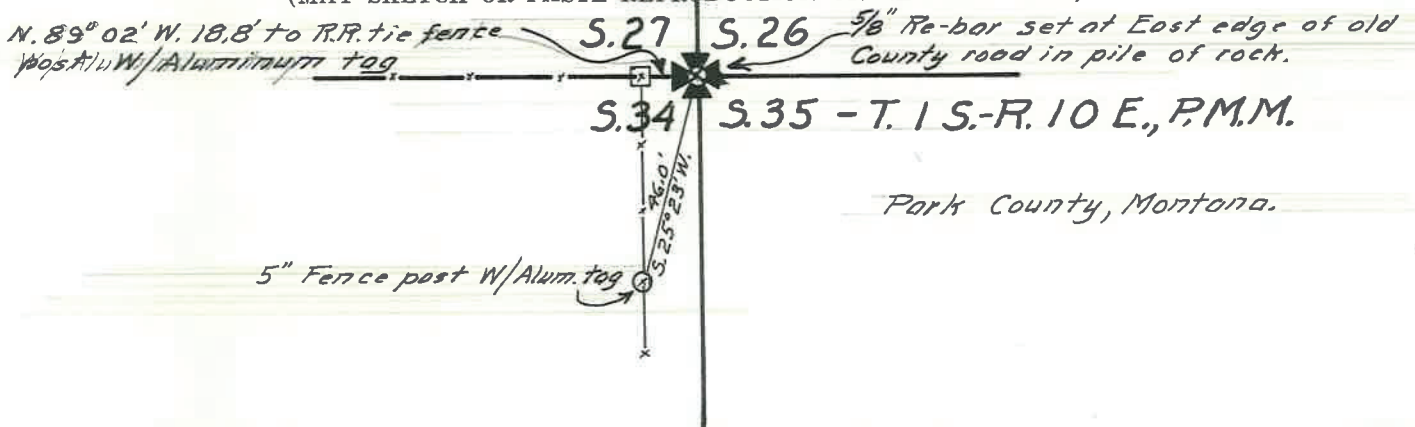
Date of work: May 1970

To perpetuate this corner we established 2 witnesses as follows:

A corner R.R. tie fence post bears N.89°02'W. 18.8 feet with an aluminum tag fastened thereon.

A 5" fence post bears S.25°23'W. 46.0 feet with an aluminum tag fastened thereon.

SKETCH, WITH COURSE AND DISTANCE TO ADJACENT CORNERS IF DETERMINED IN THIS SURVEY. (MAY SKETCH OR PASTE REPRODUCTION ON REVERSE SIDE.)



Surveyor's Seal



I, L. T. Christian certify that the information shown herein is true and correct.

L. T. Christian

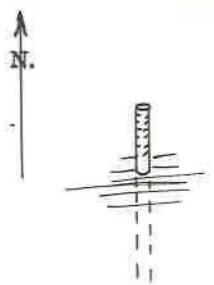
Signature of Ground Party Chief

I, L. T. Christian certify that I have carefully performed or reviewed the work done on the diagrammed corner as reported on this recordation form and approve the same.

L. T. Christian

Signature of Surveyor

DIAGRAM OF CORNER:



= Corner recorded on the sheet

301-ES
Registration Number

Office of Clerk and Recorder, County of Park 119414

This "corner record" was filed for record on the 16th day of November 1970, was noted on the cross-index plat and is assigned page No. 16, in book No. One

Margaret Frounical
County Official