

CERTIFIED LAND CORNER RECORDATION

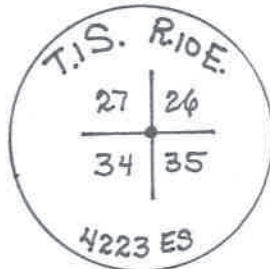
DESCRIPTION OF CORNER EVIDENCE FOUND, AND ORIGINAL RECORD (IF KNOWN)

Original Record: Set a sandstone 16 x 11 x 5 inches, 11 inches in ground for corner to Sections 26, 27, 34, and 35, marked 1 notch on S. and 2 on E. edges and raised a mound of stone alongside.

Found: 2 witness posts as noted on page 16, book, T.1 S., R.10 E., P. M. M., of Certified Land Corner Recordations. No 5/8" rebar was located at position of section corner. Lorrie Peterson stated that it was probably removed when the gravel pit was developed.

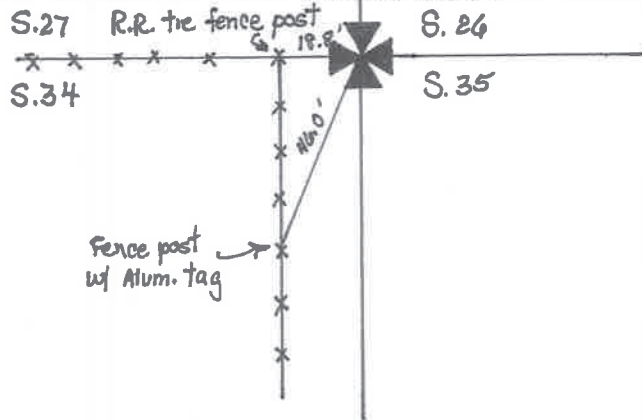
DESCRIPTION OF MONUMENT AND ACCESSORIES ESTABLISHED TO PERPETUATE THE ORIGINAL LOCATION OF THIS CORNER:

The corner was replaced using the ties to the witness posts Date of work: October 1980 with a 2 inch galvanized iron pipe with a brass cap marked as follows:



Set 0.5' below grade.

SKETCH, WITH COURSE AND DISTANCE TO ADJACENT CORNERS IF DETERMINED IN THIS SURVEY. (MAY SKETCH OR PASTE REPRODUCTION ON REVERSE SIDE.)



Surveyor's Seal



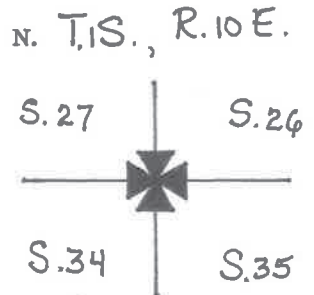
I, Virginia R. Gorton
certify that the information shown herein is true and correct.

Signature of Ground Party Chief

I, Edward L. Gorton
certify that I have carefully performed or reviewed the work done on the diagrammed corner as reported on this recordation form and approve the same.

Edward L. Gorton
Signature of Surveyor

DIAGRAM OF CORNER:



= Corner recorded on the sheet

4223 ES
Registration Number

169849

Office of Clerk and Recorder, County of Park

This "corner record" was filed for record on the 27th day of April, 1982, was noted on the cross-index plat and is assigned page No. 70, in book No. one

Margaret Monical
County Official By Kathryn M. Coy