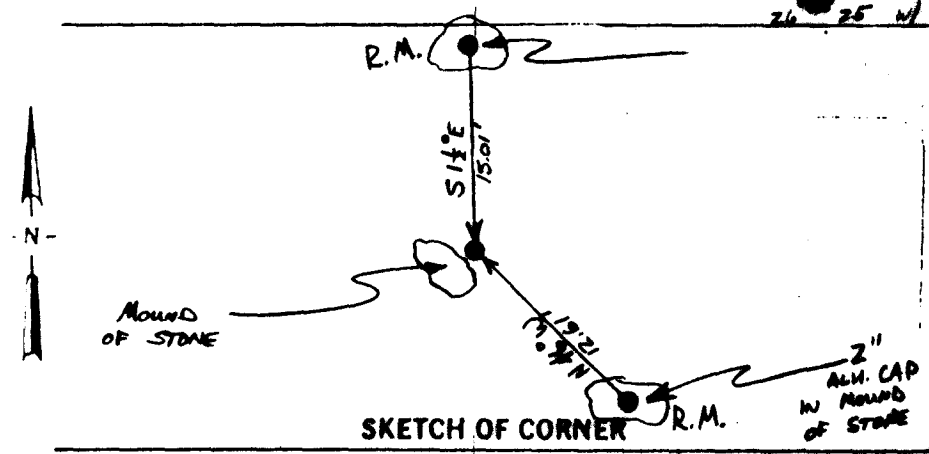
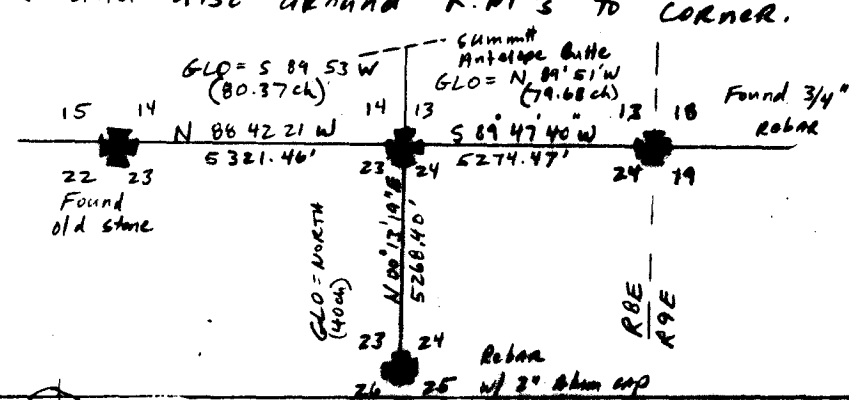
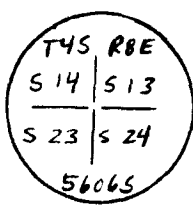


- INSTRUCTIONS**
1. Original and subsequent record used to evaluate the corner position.
 2. Description of evidence found, note discrepancies in the record, state method of establishing lost or obliterated corners.
 3. Description of monument and accessories set to perpetuate the corner position.
 4. Sketch of corner, show all pertinent data which can best be shown in a sketch example, corner marking, topography ties, position of accessories, etc.
 5. Certification must be signed and sealed by Registered Land Surveyor in State of Montana.
 6. Fill in Cross Index & Section Diagram at bottom of sheet.

CERTIFIED CORNER RECORDATION

Corner NE Cor SECTION 23 T. 4S R. 8E P.M.M. PARK County

- 1) On record as a Basalt stone set by T. Post according to G.L.O. Records dated July, 1874.
- 2) Found no evidence of original corner, after diligent search in the appropriate area. Evidence of original corner monuments have been found to be very scarce in this general area. Reestablished corner from proportioned distances to Section corners to the West, East & South and a definitive topo call to Summit of Antelope Butte to the north, as well as a topo call to Ravine north of reestablished corner position.
- 3) Set a 5/8" x 24" Rebar with 2" Aluminum cap stamped as shown below. Set 5/8" x 24" Rebars with 2" Aluminum caps placed as shown in sketch below for R.M.'s to corner. Raised mound of stone next to corner and also around R.M.'s to corner.



CERTIFICATION

1. W.K. STEPHENS
certify the information shown herein to be true and correct.

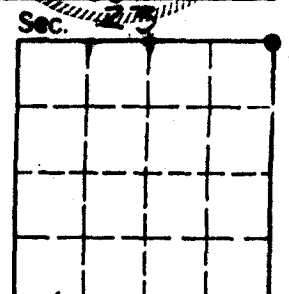
W.K. STEPHENS
Signature of Party

1. DENNIS L. GASTON
certify that this Corner Record is a true and correct copy of the original as certified by me or under my direction in compliance with the "Corner Recordation Act" (70-23-301, M.S.A.)

Dennis L. Gaston
Signature of Surveyor & Seal

Date: 4/29/93 Reg. No. 5606S
Employer: GASTON ENG. SURVEYING

Office of Clerk and Recorder, County of PARK. This "corner record" was filed for record on the May 3 day of 19 93 was noted on the cross-index plat and is assigned page No. 30, in book No. one.
 B. DEAN HOLMES
 Clerk & Recorder
 County Official



Cross Index No. N 21 T. 4S R. 8E P.M.M.
231917