

CERTIFIED CORNER RECORDATION

Corner S 1/4 SECTION 8 T. 32N R. 23E P.M.M. BLAINE County

ORIGINAL RECORD: (GLO - 1890, Page) Set a granite stone 12 x 8 x 6 ins. 8 ins. in the ground for 1/4 sec. cor., marked 1/4 on N. face, dug pits 18 x 18 x 12 ins. E. and W. of stone, 5 1/2 ft. dist., and raised a mound of earth 1 1/2 ft. high, 3 1/2 ft. base alongside.

SUBSEQUENT RECORD: No subsequent record.

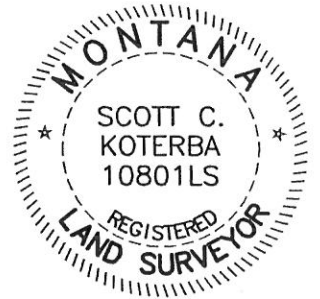
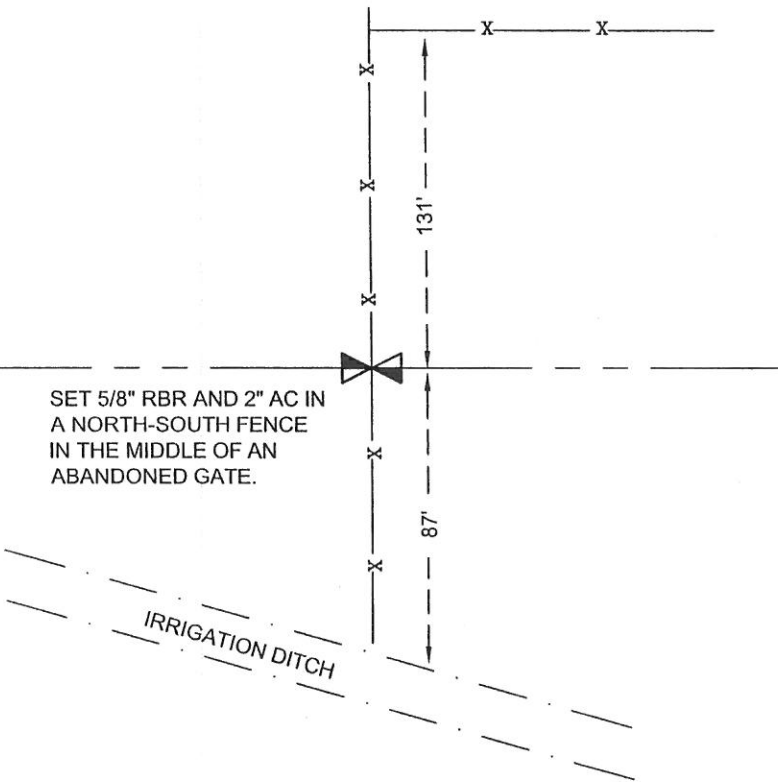
EVIDENCE FOUND: (August, 2007) No original evidence was found. A North-South fence occupies the area.

PERPETUATION: (August, 2007) Held the North-South fence for Easting and the section line for Northing. Set a 5/8" rebar and 2" aluminum cap, marked as shown. Set a upside down steel "T" post, 0.3' North of the corner.

SEE ASSOCIATED CERTIFICATE OF SURVEY

347038 BOOK: 52 MISCBOOK PAGE: 879 Pages: 1
 STATE OF MONTANA BLAINE COUNTY
 RECORDED: 01/24/2008 2:00 KOI: COR/REC
 SANDRA L. BOARDMAN CLERK AND RECORDER
 FEE: \$0.00 BY: *Scott C. Koterba*
 TO: KOTERBA, SCOTT C. 324 DARBY AVE., LEWISTOWN MT 59457

SEC. 8



07-820



CERTIFICATION	
I, _____	certify the information shown herein is true and correct.
Signature Ground Party Chief	
Scott C. Koterba	
I, _____	
certify that this Corner Record correctly represents work performed by me or under my direction in compliance with the "Corner Recordation Act" (70-22-101, et seq., M.C.A.)	
<i>Scott C. Koterba</i>	
Signature of Surveyor & Seal	
Date: <u>1/23/08</u>	Reg. No. <u>10801 LS</u>
Employer: <u>Milestone Surveying</u>	

SEC. 17

SKETCH OF CORNER

Office of Clerk and Recorder, County of Blaine. This "corner record" was filed for record on January 24, 2008 @ 2:00 P.M. was noted on the cross-index plat and (is assigned page No. 879, in book No. 52 Mex) *Scott C. Koterba* County Official

Sec. 8

• corner this sheet

347038 Cross Index No. J-7 T. 32N R. 23E PMM