

STATE OF MONTANA BLAINE COUNTY

RECORDED: 11/08/2010 9:05 KOI: COR/REC

SANDRA L. BOARDMAN CLERK AND RECORDER

FEE: \$0.00

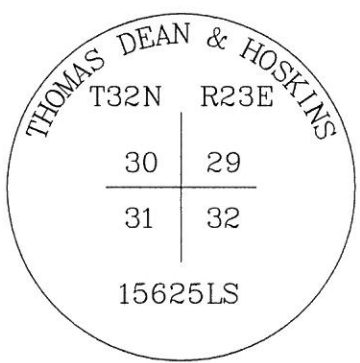
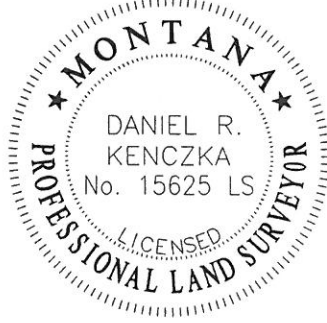
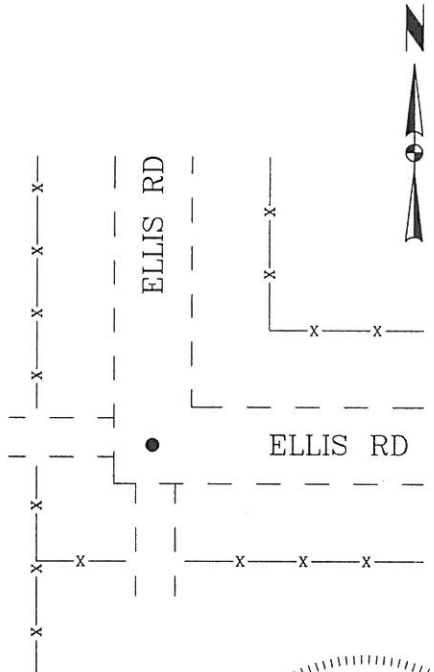
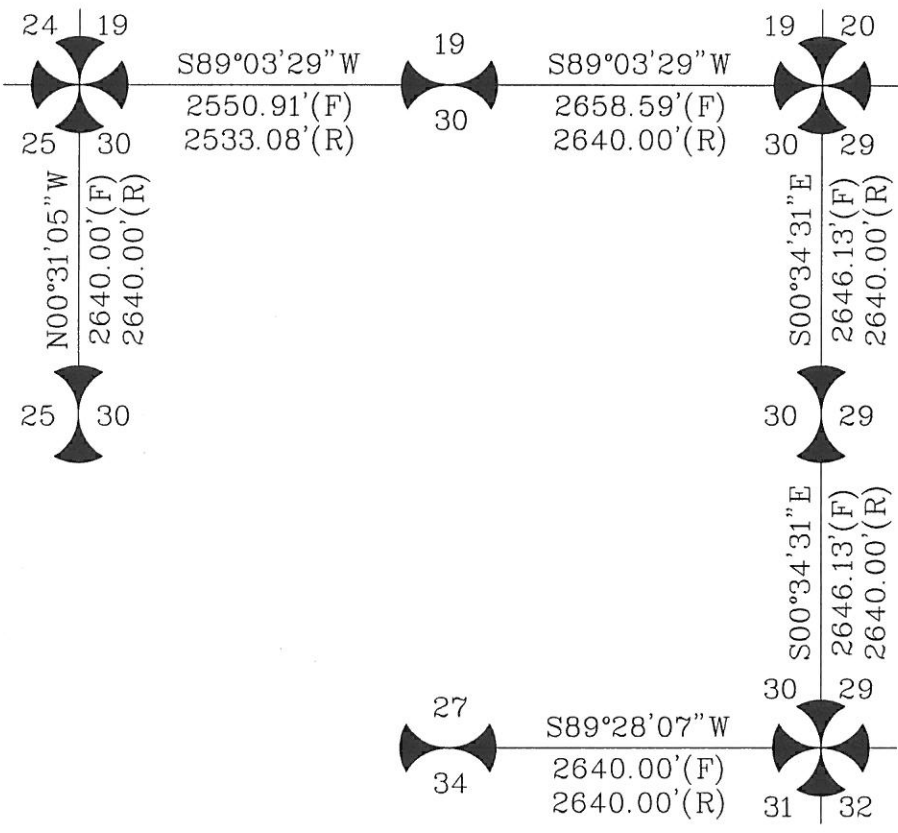
BY: *Lauree Sue Riggs*

TO: MISC FILE

CERTIFIED CORNER RECORDATION

Corner SE CORNER SECTION 30 T. 32N R. 23E P.M.M. BLAINE County

- 1) GLO - ORIGINAL SURVEY 1891, FRACTIONAL SECTION
- 2) ORIGINAL CORNER NOT FOUND. LOCATION FELL IN THE INTERSECTION OF TWO COUNTY ROADS. NO OTHER EVIDENCE OF CORNER FOUND.
- 3) ESTABLISHED CORNER LOCATION BY DOUBLE PROPORTION OF EXISTING FOUND CORNERS AND COUNTY ROAD INTERSECTIONS.
- 4) SET A 5/8" x 24" REBAR WITH A 2" ALUM CAP, BURIED 0.5' BELOW SURFACE OF GRAVEL ROAD.



SKETCH OF CORNER

CERTIFICATION

I, _____
certify the information shown herein is true and correct.

Signature Ground Party Chief
DANIEL R. KENCZKA

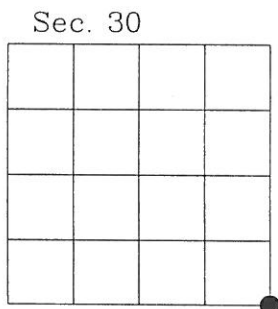
I, _____
certify that this Corner Record correctly represents work performed by me or under my direction in compliance with the "Corner Recordation Act" (70-22-101, et seq., M.C.A.)

Daniel R. Kenczka
Signature of Surveyor & Seal

Date: 11-5-10 Reg. No. 15625LS
Employer: THOMAS, DEAN, & HOSKINS

Office of Clerk and Recorder, County of Blaine. This "corner record" was filed for record on November 8, 2010 @ 9:05 a.m. was noted on the cross-index plat and is assigned page No. 423, in book No. 54 Misc

Lauree Sue Riggs
County Official



PT # 305

• corner this sheet