

**INSTRUCTIONS**

1. Original and/or subsequent record used to evaluate the corner position.
2. Description of evidence found, note discrepancies in the record, state method of establishing lost or obliterated corners.
3. Description of monument and accessories set to perpetuate the corner position.
4. Sketch of corner, show all pertinent data which can best be shown in a sketch example, corner marking, topography ties, position of accessories, etc.
5. Certification must be signed and sealed by Land Surveyor registered in the State of Montana.
6. Fill in Cross Index & Section Diagram at bottom of sheet.

163620

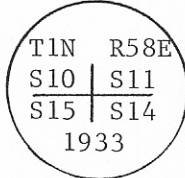
**CERTIFIED CORNER RECORDATION**

Corner SW 11 T. 1N R. 58E P.M.M. Carter County

1) (1933) Parker

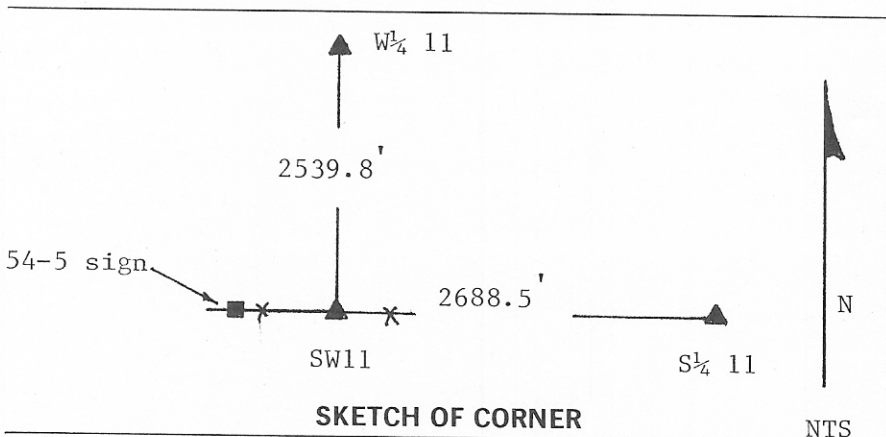
The cor. of secs. 10,11,14 and 15, which is a sandstone 4x12x4 ins. above ground, marked as described in the official record. On W. side of cor. stone.

Set an iron post, 3 ft. long, 2 ins. diam., 36 ins. in ground, with brass cap marked.



Dig pits 18x18x12 ins., in each sec. 3 ft. distant.

- 2) Found cap as described above. No pits found.
- 3) Placed 54-9 sign on wood fence post above cap, and placed 54-5 sign on wood fence post N89°W 14.7



SKETCH OF CORNER

NTS

CERTIFICATION

I, Mark Aughmon certify the information shown herein to be true and correct.

Mark Aughmon  
Signature Ground Party Chief

I, Curtis W. Glasoe certify that this Corner Record correctly represents work performed by me or under my direct supervision in compliance with the "Corner Recordation Act" (7-22-101, et seq., M.C.A.)

Curtis W. Glasoe  
Professional Land Surveyor Seal

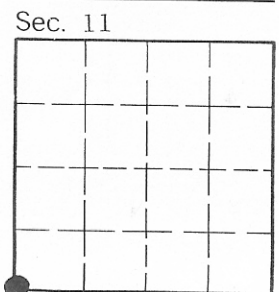
Date: 7/17/92

Employer: USDA-FS

Office of Clerk and Recorder, County of Carter. This "corner record" was filed for record on August 5, 1992 was noted on the cross-index plat and is assigned page No. \_\_\_\_\_, in book No. \_\_\_\_\_

163620

Cross Index No. J-17 T. 1N R. 58E P.M.M.



• - corner this sheet