

INSTRUCTIONS

1. Original and subsequent records to evaluate the corner position.
2. Description of monument found, note discrepancies in the record, state method of establishing lost or obliterated corners.
3. Description of monument and accessories set to perpetuate the corner position.
4. Sketch of corner, show all pertinent data which can best be shown in a sketch example, corner marking, topography ties, position of accessories, etc.
5. Certification must be signed and sealed by Land Surveyor registered in the State of Montana.
6. Fill in Cross Index & Section Diagram at bottom of sheet.

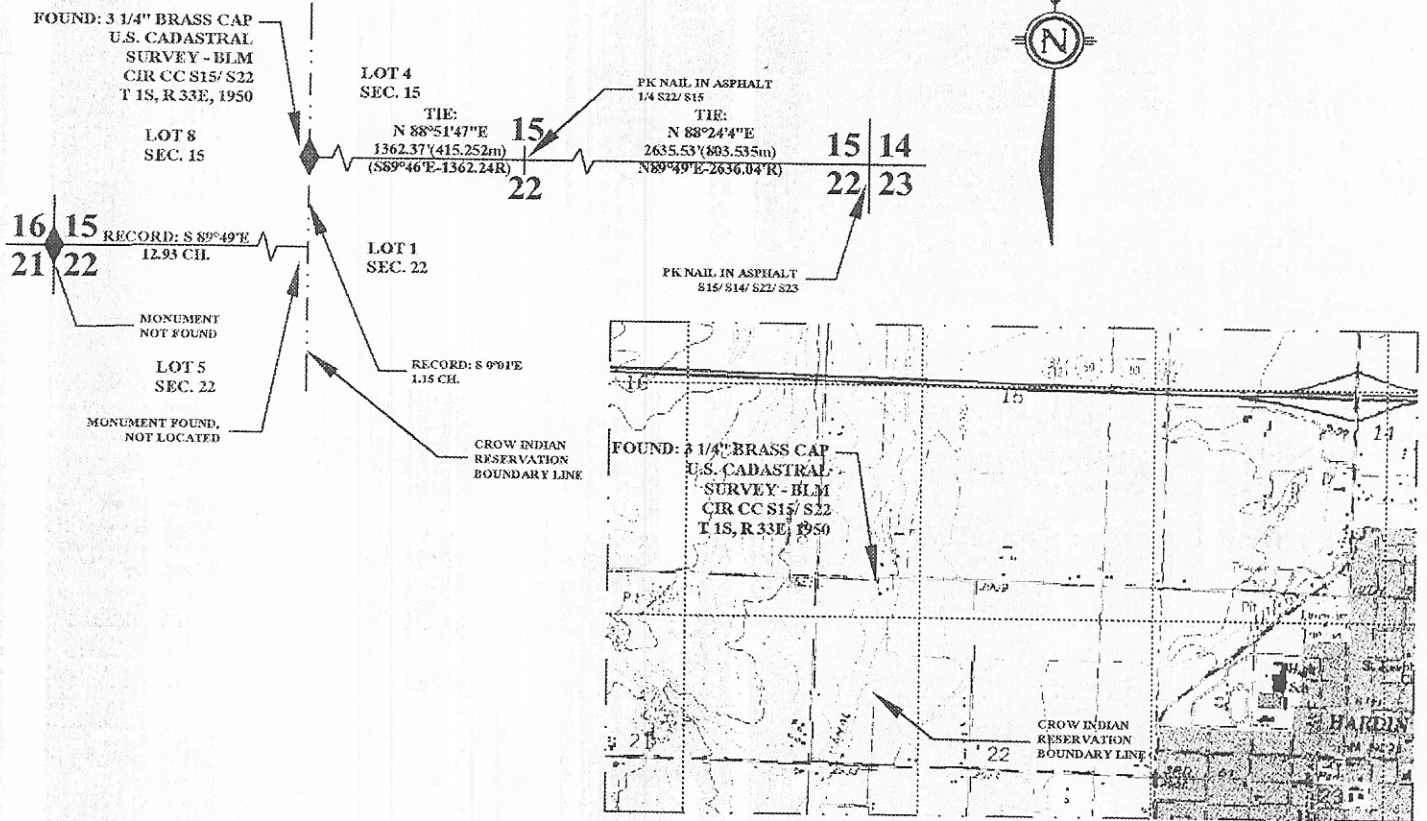
326267

CERTIFIED CORNER RECORDATION

Corner CC CIR S15 / S22 T. 1S R. 33E P.M.M. Big Horn County

RECORD: AN IRON POST, 28 INCHES LONG, 2 1/2 INCH DIAMETER, SET 26 INCHES IN THE GROUND WITH A BRASS CAP MARKED "CIR CC S15/ S22 T1S R33E 1950".

FOUND: MONUMENT AS DESCRIBED AND SHOWN BELOW.



LOCATION MAP

FND= 0.28' (0.085) BLM BC / FLUSH / 26.25' (8m) N CTY RD 155 (10TH ST) / 3.77' (1.15m) S OF E-W FENCE LINE / @ W GATE POST



SKETCH OF CORNER

CERTIFICATION

I, _____
 Certify the information shown herein as true and correct.

Signature Ground Party Chief
 S. D. DAWSON

I, _____
 certify that this Corner Record correctly represents work performed by me or under my direction in accordance with the "Corner Recordation Act" (70-27101, et seq., M.C.A.)

Signature of Surveyor & Seal

 LICENSED SURVEYOR

Date: 11-28-01 Reg. No. 14516LS

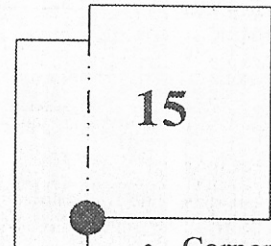
Employer: WASHINGTON GROUP.

Office of Clerk and Recorder, County of _____ This "corner record" was filed for record on JAN 04 2002 was noted on the cross-index plat and is assigned page no. _____ in book no. _____

[Signature]

 County Official

Cross Index No. N-13 T. 1S R. 33E P.M.M.



.. Corner this sheet
 326267