

INSTRUCTIONS

326263

1. Original and subsequent record use to locate the corner position.
2. Description of monument found, note discrepancies in the record, state method of establishing lost or obliterated corners.
3. Description of monument and accessories set to perpetuate the corner position.
4. Sketch of corner, show all pertinent data which can best be shown in a sketch example, corner marking, topography ties, position of accessories, etc.
5. Certification must be signed and sealed by Land Surveyor registered in the State of Montana.
6. Fill in Cross Index & Section Diagram at bottom of sheet.

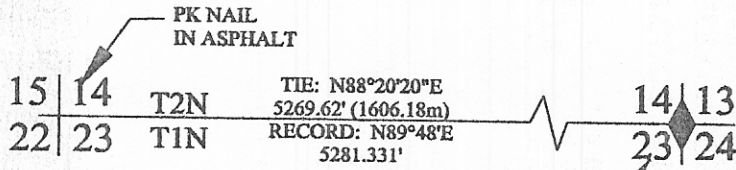
CERTIFIED CORNER RECORDATION

Corner S14/ S13/ S23/ S24 T. 1S R. 33E P.M.M. Big Horn County

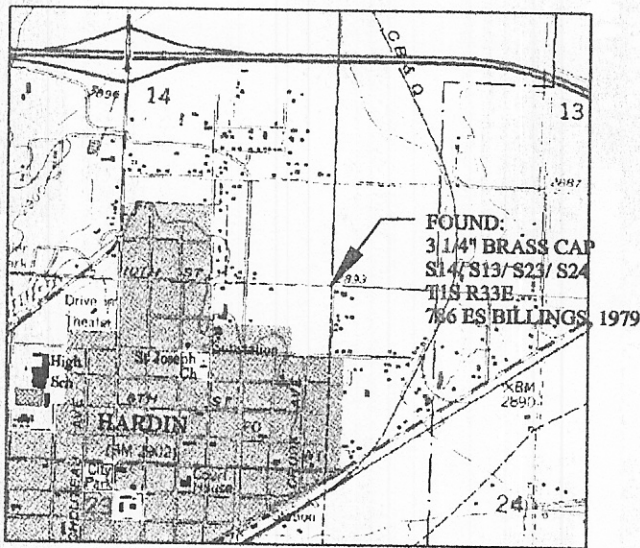
RECORD: A SANDSTONE, 24 INCHES x 8 INCHES x 4 INCHES, SET 18 INCHES IN THE GROUND, MARKED WITH 3 NOTCHES ON THE SOUTH SIDE AND 1 NOTCH ON THE EAST EDGE.

FOUND: MONUMENT AS DESCRIBED AND SHOWN BELOW.

All Dimensions Given in Meters
Unless Otherwise Noted



FOUND:
3 1/4" BRASS CAP
S14/ S13/ S23/ S24
T1S R33E
786 ES BILLINGS, 1979



LOCATION MAP

NOTE:SEE ATTACHED PHOTOS FOR LOCATION OF MONUMENT



SKETCH OF CORNER

CERTIFICATION

I, _____
Certify the information shown herein is true and correct.

Signature of Ground Party Chief

I, _____
certify that this Corner Record correctly represents work performed by me or under my direction in compliance with the Montana Corner Recordation Act (70-20-107) of the M.C.A.

Signature of Surveyor & Seal

Date: 11-28-2002 License No. 11818 LS

Employer: Washington Group

Office of Clerk and Recorder, County of _____ This "corner

record" was filed for record on JAN 04 2002

was noted on the cross-index plat and is assigned page no. _____ in

book no. _____

Lydia S. Maxwell
County Official

Cross Index No. N-21 T. 1S R. 33E P.M.M.

