

INSTRUCTIONS

326306

1. Original and subsequent record . . . evaluate the corner position.
2. Description of evidence found, note discrepancies in the record, state method of establishing lost or obliterated corners.
3. Description of monument and accessories set to perpetuate the corner position.
4. Sketch of corner, show all pertinent data which can best be shown in a sketch example, corner marking, topography ties, position of accessories, etc.
5. Certification must be signed and sealed by Land Surveyor registered in the State of Montana.
6. Fill in Cross Index & Section Diagram at bottom of sheet.

CERTIFIED CORNER RECORDATION

Corner S11/ S21/ S13/ S14 T. 1S R. 33E P.M.M. Big Horn County

RECORD: A SANDSTONE 14 INCHES x 8 INCHES x 6 INCHES, SET 9 INCHES IN THE GROUND. FACTORY SUBDIVISION PLAT SHOWS 60D SPIKE.

FOUND: 60d SPIKE AS DESCRIBED AND SHOWN BELOW.

SET: 2" ALUMINUM CAP ON #5 REBAR, .30" LONG, SET FLUSH WITH PAVEMENT, MARKED: "S11/ S12/ S14/ S13// T1S R33E 2001, MT LS14516".

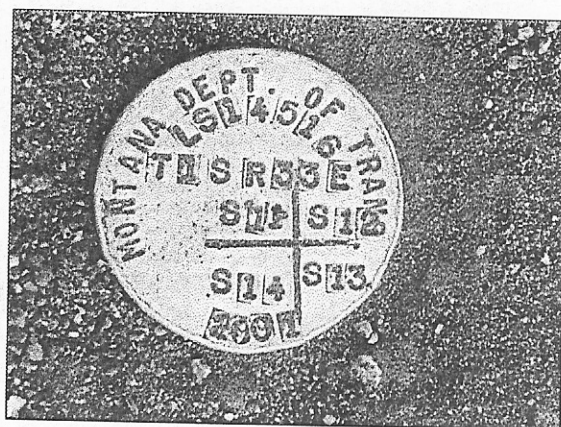
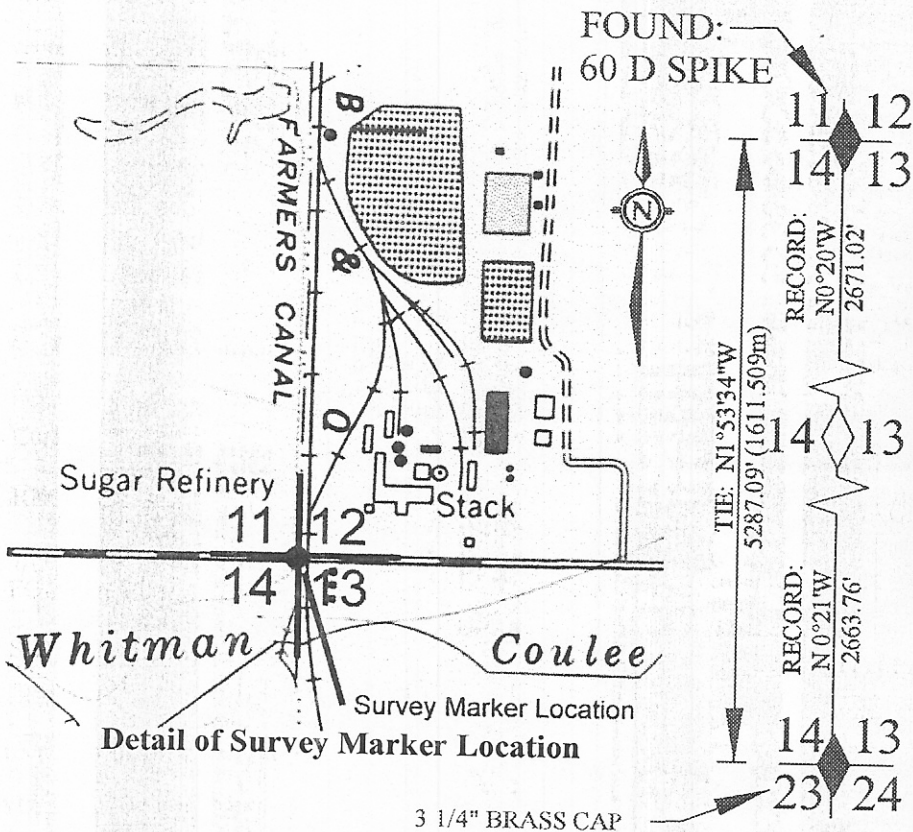
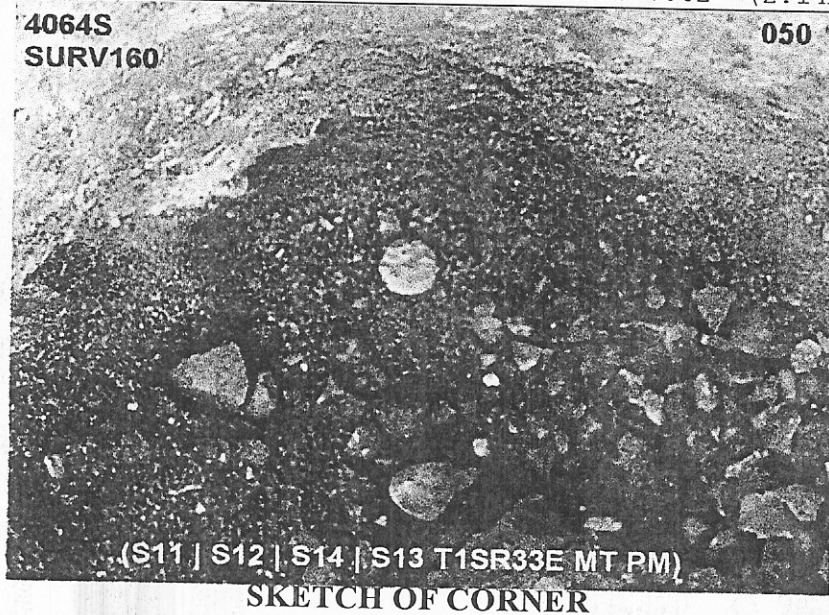


PHOTO OF CAP STAMPING

FND=60D SPIKE 0.49' (0.15m) BELOW ASPHALT CTY RD 236 (S11 [S12 [S14 [S13 T1S R33E MT PM) 42.65' (13m) WEST CL CB&Q RR TRACKS 7.02' (2.14m) N OF CL 236



CERTIFICATION

I, _____ Certify the information shown herein is true and correct.

Signature G. Dawson Ground Party Chief

I, _____ certify that this Corner Record correctly represents work performed by me or under my direction in compliance with the "Corner Recordation Act" (70-22-101, et seq., M.C.A.)

Signature of Surveyor & Seal Dawson

Date: 11-28-01 Reg. No. 14516LS

Employer: Washington Grading

Office of Clerk and Recorder, County of _____ This "corner record" was filed for record on JAN 04 2002

was noted on the cross-index plat and is assigned page no. _____, in book no. _____

G. Dawson
County Official

Cross Index No. 321 T. _____ R. _____ PMM

13