

**INSTRUCTIONS**

1. Original and/or recent record used to evaluate the corner position.
2. Description of monument found, note discrepancies in the record, state method of establishing lost or obliterated corners.
3. Description of monument and accessories set to perpetuate the corner position.
4. Sketch of corner, show all pertinent data which can best be shown in a sketch example, corner marking, topography ties, position of accessories, etc.
5. Certification must be signed and sealed by Land Surveyor registered in the State of Montana.
6. Fill in Cross Index & Section Diagram at bottom of sheet.

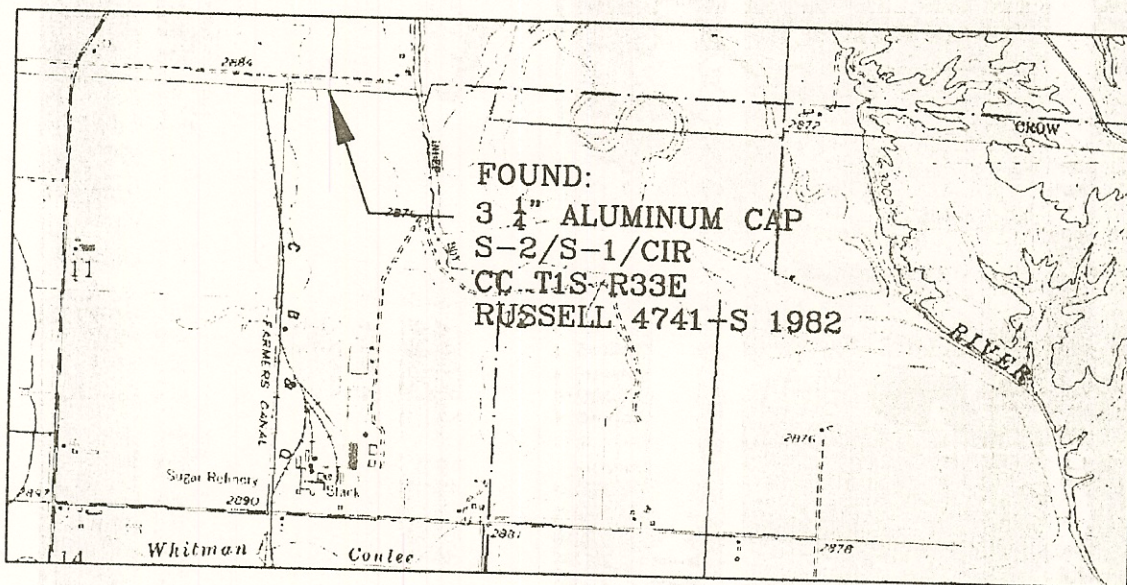
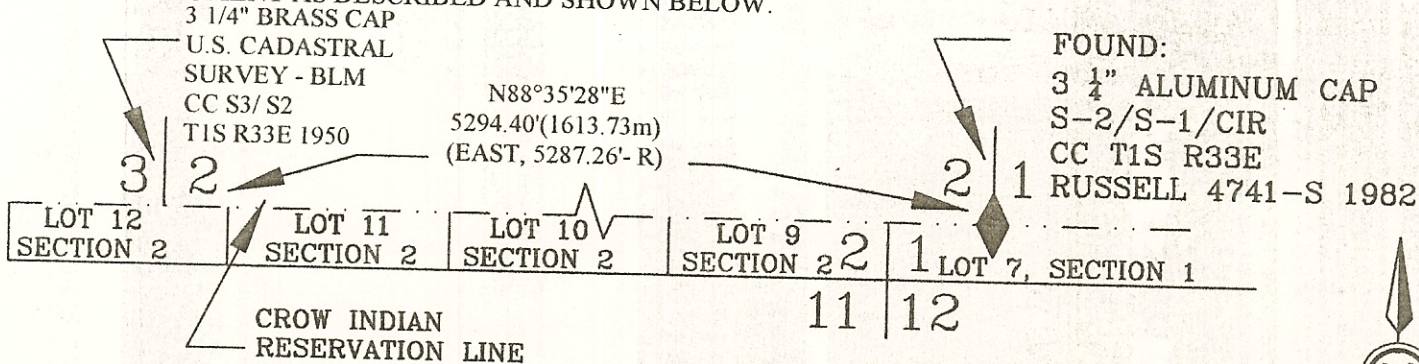
326327

**CERTIFIED CORNER RECORDATION**

Corner CIR CC S2/ S1 T. 1S R. 33E P.M.M. Big Horn County

RECORD: COS #428 SHOWS BRASS CAP IN PLACE.

FOUND: MONUMENT AS DESCRIBED AND SHOWN BELOW.



0.08m ALUM CAP/0.24m BELOW GRAVEL RD (CIR CC S2/ S1 T1S R33E RUSSELL 2741-S 1982)



**CERTIFICATION**

I, \_\_\_\_\_  
Certify the information shown herein is true and correct.

Signature of Record Party Chief

I, \_\_\_\_\_  
certify that this Corner Record correctly represents work performed by me or under my direction in compliance with the "Corner Recordation Act" (20-2-101) (Mont. Code Annotated, M.C.A.)

Signature of Surveyor & Seal  
Date: 11-28-01  
Employer: WASHBURN GROUP

Office of Clerk and Recorder, County of \_\_\_\_\_ This "corner record" was filed for record on JAN 04 2002 was noted on the cross-index plat and is assigned page no. \_\_\_\_\_ in book no. \_\_\_\_\_

Linda S. McPherson  
County Official

Cross Index No. E-21 T. \_\_\_\_\_ R. \_\_\_\_\_ PMM

