



3472171

Page: 1 of 1
07/08/2008 02:10P

Yellowstone County CR 0.00

3898

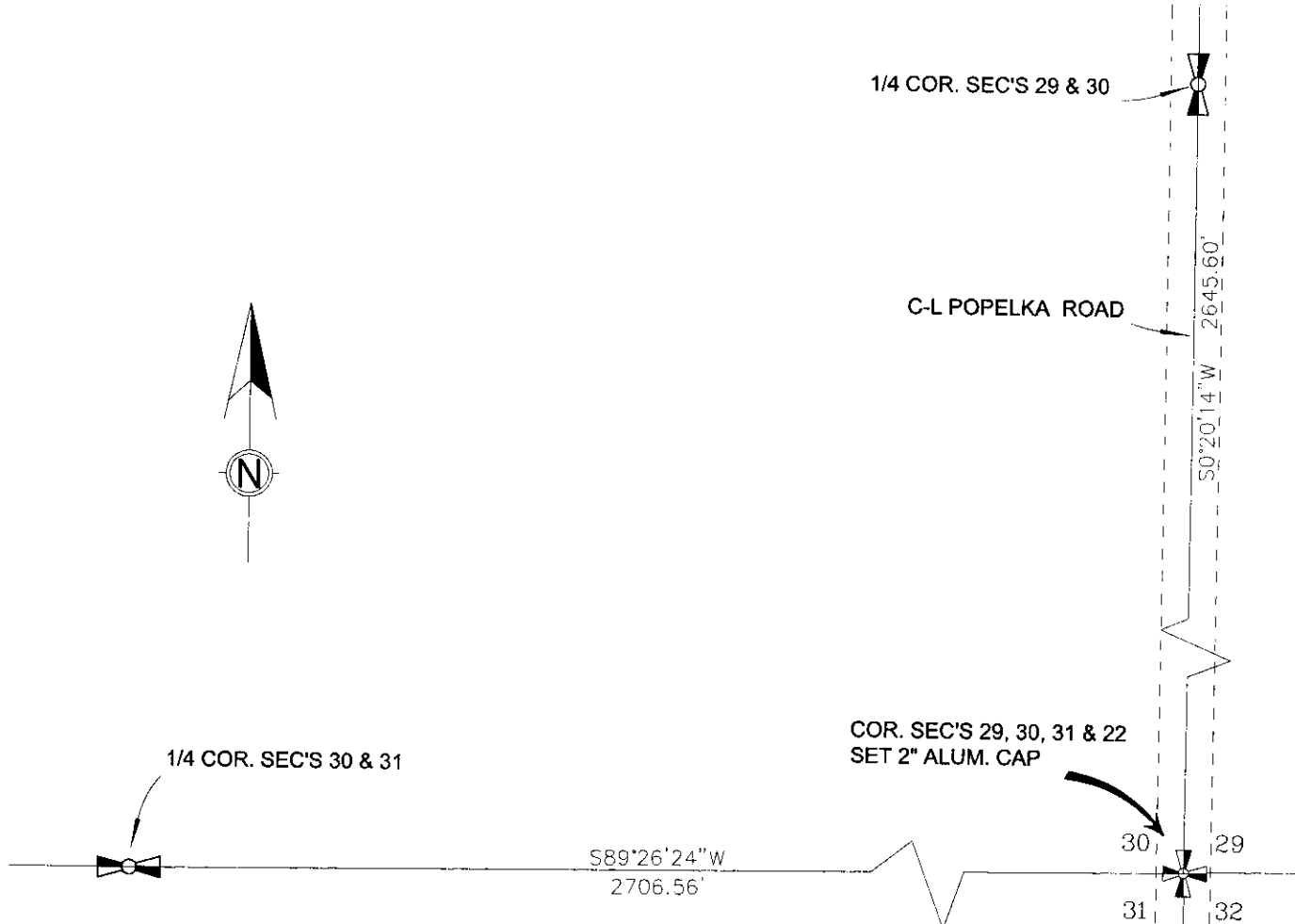
CERTIFIED CORNER RECORDATION

Corner SECTIONS 29,30,31 & 32 T. 2 N. R. 24 E. P.M.M. YELLOWSTONE County

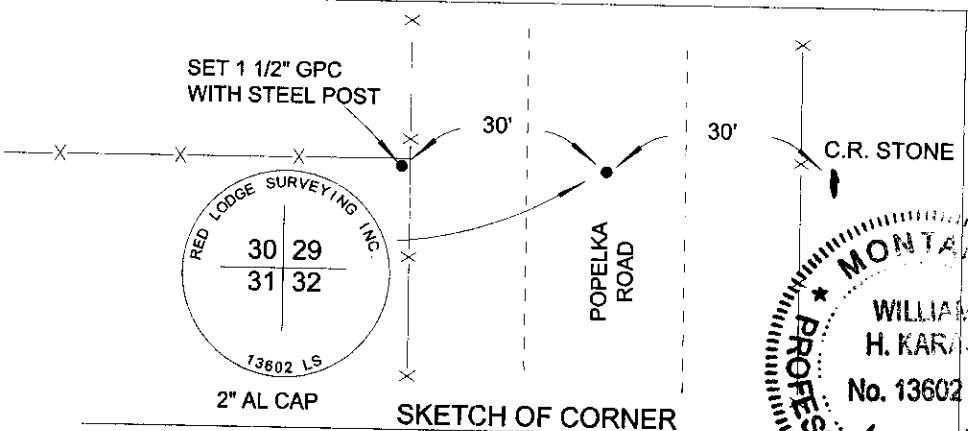
Original: PER GLO SURVEY VIA LAMPORT, 1891, SET A SANDSTONE 27X18X2 INS., 21 INS. IN THE GROUND. FOR COR. TO SECS. 29,30,31 & 32, MARKED 1 NOTCH ON S. & 5 NOTCHES ON E. EDGES, DUG PITS 18X18X12 INS. IN EACH SEC. 5 1/2 FT DISTANT, AND RAISED A MOUND OF EARTH 2 FT HIGH 4 1/2 FT BASE ALONGSIDE.

Evidence: ORIGINAL STONE LOST TO ROAD CONSTRUCTION, FOUND COUNTY ROAD STONE IN EAST R/W OF COUNTY ROAD. RE-ESTABLISHED CORNER POSITION 30 FT EASTERLY OF FOUND COUNTY ROAD STONE ON LINE WITH ROAD STONE AND 1/4 CORNER OF SECS. 30 & 31.

Perpetuation: SET 2" STAMPED AL. CAP ON A NO. 5 REBAR 24" LONG IN CENTERLINE COUNTY ROAD .4' BELOW SURFACE, SET 1 1/2" GREEN PLASTIC CAP AND STEEL POST A DISTANCE OF 30FT, S89°26'24" W.



See Certificate of Survey Number 3277 for further information

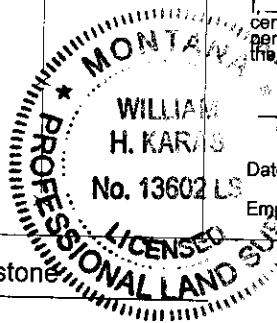


CERTIFICATION

I, BRENT NEARPASS
certify the information shown herein is true and correct.
Brent Nearpass
Signature Group Party Chief

I, WILLIAM H. KARAS
certify that this Corner Record correctly represents work performed by me or under my direction in compliance with the "Corner Recordation Act" (70-22-102, et seq., M.C.A.)
William H. Karas
Signature of Surveyor & Seal

Date: Feb. 2006 Reg. No. 13602 LS
Employer: RED LODGE SURVEYING INC.



Office of Clerk and Recorder, County of Yellowstone

This "corner record" was filed for record on _____
was noted on the cross-index plat and is assigned page No. _____

In book No. _____

County Official _____

Cross Index No. V5 T. 2 N. R. 24 E. PMM

Adopted July 1, 1981, Montana Board of Professional Engineers & Land Surveyors

Section 30

• corner this sheet