

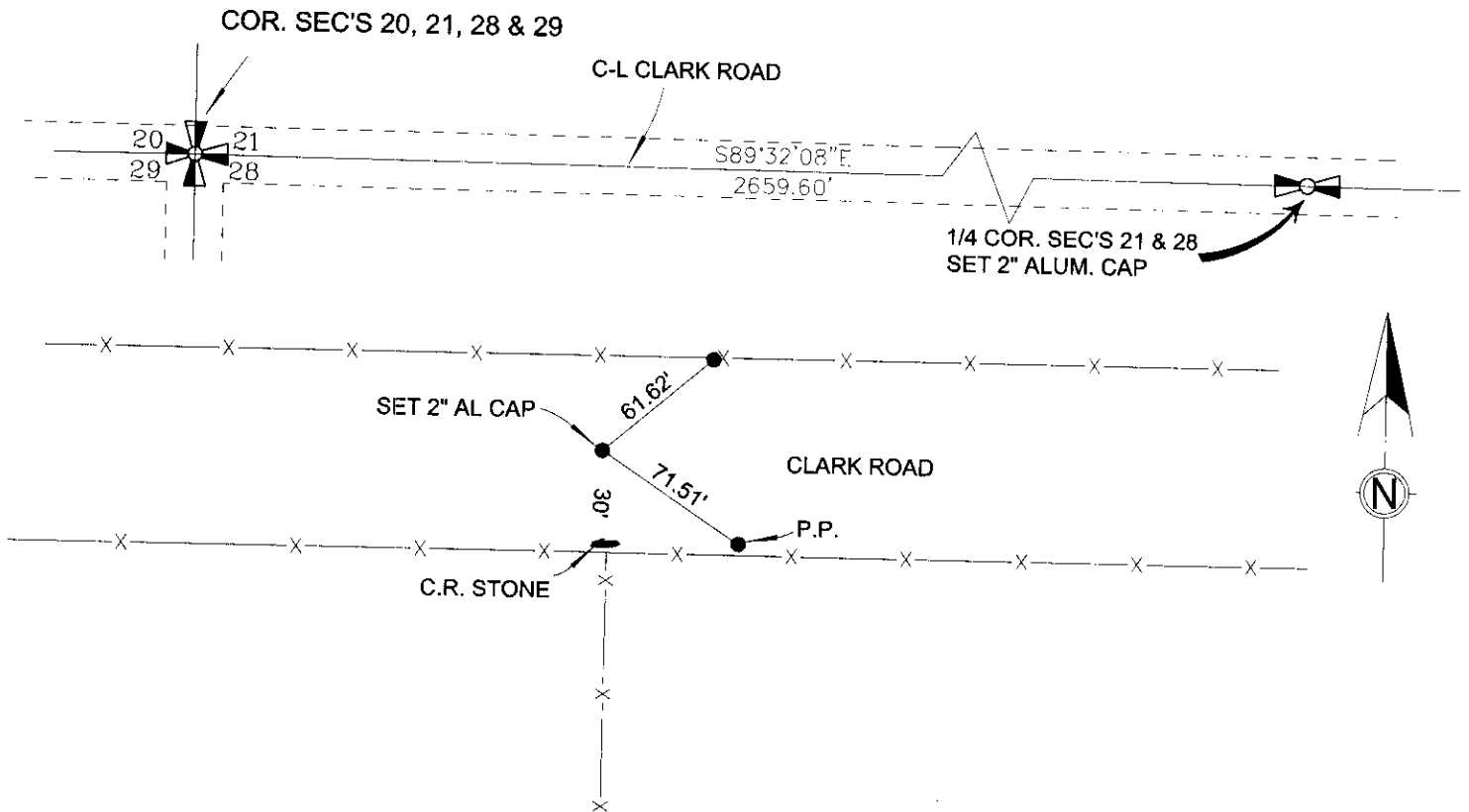
CERTIFIED CORNER RECORDATION

Corner 1/4 SECTIONS 21 & 28 T. 2 N. R. 24 E. P.M.M. YELLOWSTONE County

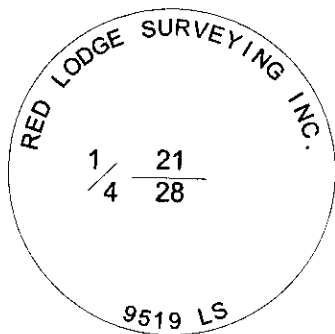
Original: PER GLO SURVEY VIA LAMPORT, 1891, SET A SANDSTONE 18X13X3 INS., 12 INS. IN THE GROUND FOR 1/4 SEC. COR. MARKED 1/4 ON NORTH FACE, DUG PITS 18X18X12 INS. EAST & WEST OF STONE 5 1/2 FT DISTANT AND RAISED A MOUND OF EARTH ALONGSIDE.

Evidence: ORIGINAL STONE LOST TO ROAD CONSTRUCTION, FOUND COUNTY ROAD STONE IN SOUTH R/W OF COUNTY ROAD. RE-ESTABLISHED CORNER POSITION 30 FEET NORTH AND PERPENDICULAR TO ROAD R/W WEST OF C.R. STONE.

Perpetuation: SET 2" STAMPED AL. CAP ON A NO. 5 REBAR 24" LONG IN CENTERLINE COUNTY ROAD .4' BELOW SURFACE, NAILED 1 1/2" YELLOW PLASTIC CAP NORTHEAST OF CORNER IN R/W FENCE A DISTANCE OF 61.62' AND NAILED 1 1/2" YELLOW PLASTIC CAP SOUTHEAST OF CORNER IN A POWER POLE A DISTANCE OF 71.51'.

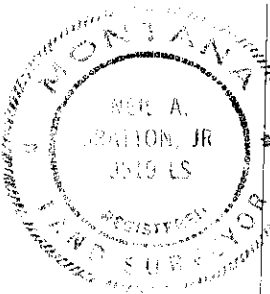


See Certificate of Survey Number 3263 for further information



2" AL CAP

SKETCH OF CORNER



CERTIFICATION

I, BRENT NEARPASS
certify the information shown herein is true and correct.

Brent Nearpass
Signature Ground Party Chief

I, NEIL A. BRATTON JR
certify that this Corner Record correctly represents work performed by me or under my direction in compliance with the "Corner Recordation Act" (70-22-401, et seq., M.C.A.)

Neil A. Bratton Jr
Signature of Surveyor & Seal

Date: Feb. 2006 Reg. No. 9519 LS

Employer: RED LODGE SURVEYING INC.

Office of Clerk and Recorder, County of Yellowstone

This "corner record" was filed for record on _____
was noted on the cross-index plat and is assigned page No. _____

In book No. _____

County Official _____

Cross Index No. R-11 T. 2 N. R. 24 E. PMM

Section 28

• corner this sheet