

INSTRUCTIONS

1. Original and/or subsequent record used to evaluate the corner position.
2. Description of evidence found, note discrepancies in the record, state method of establishing lost or obliterated corners.
3. Description of monument and accessories set to perpetuate the corner position.
4. Sketch of corner, show all pertinent data which can best be shown in a sketch example, corner marking, topography ties, position of accessories, etc.
5. Certification must be signed and sealed by Land Surveyor registered in the state of Montana.
6. Fill in Cross Index & Section Diagram at bottom of sheet.

CERTIFIED CORNER RECORDATION

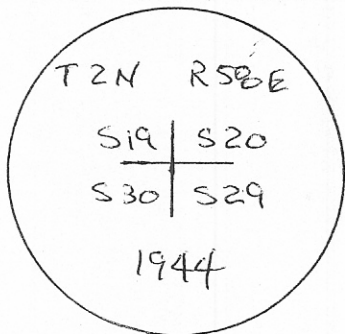
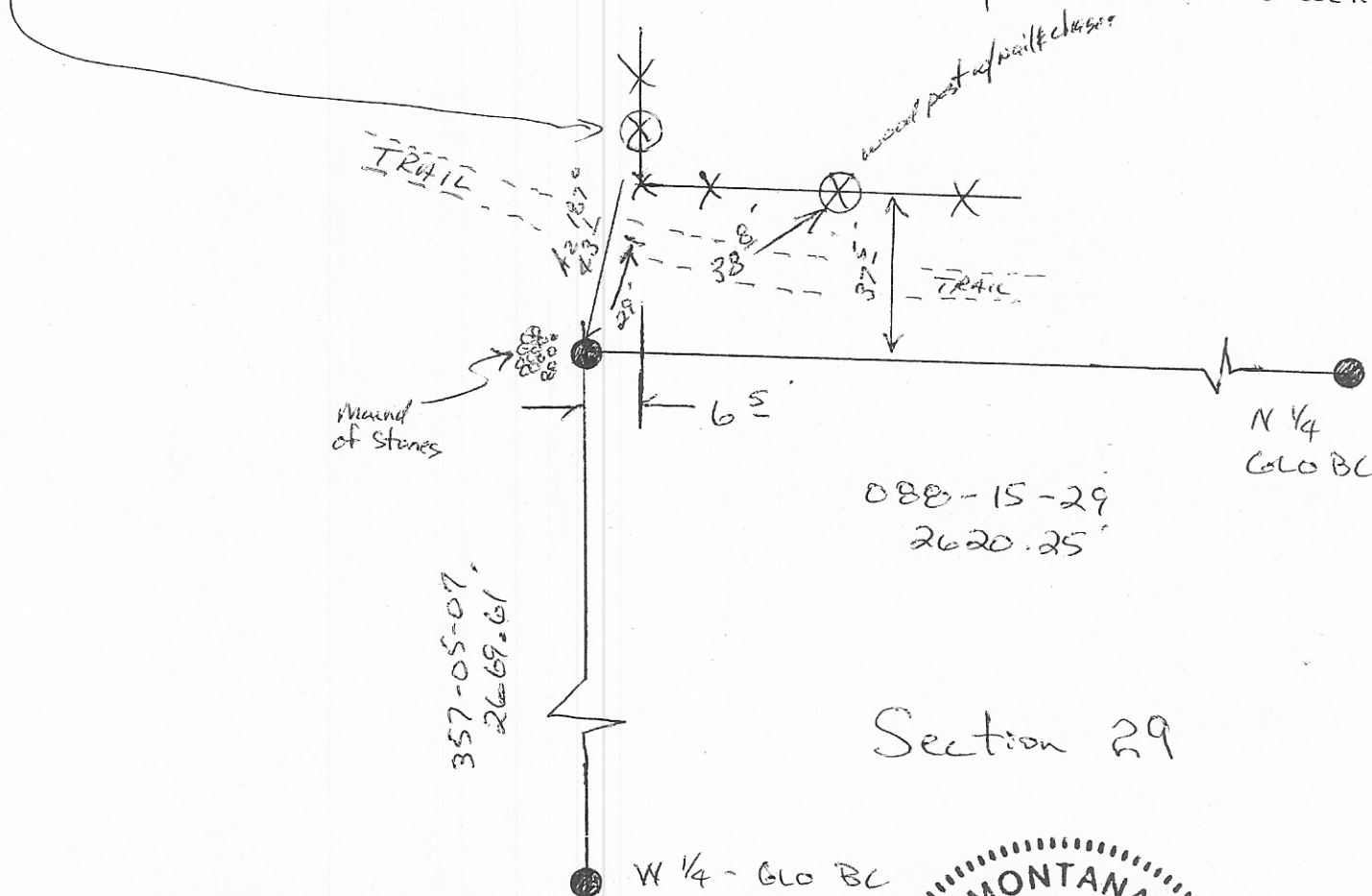
Corner NW - SECTION 29 T. 2 N R. S8E P.M.M. CARTER County

Dependent Resurvey in 1944 by GLO

Set an iron post, 3 ft. long, 2 ins. in diam., 30 ins. in the ground, with brass cap marked (see below); raise a mound of stone, 3 ft. base, 2 ft. high w. of corner.

Found GLO monument as described with mound of stones on west side.

Placed LSM tag & nail/chaser on North base post of Fence Corner



SKETCH OF CORNER

MONTANA
 PROFESSIONAL LAND SURVEYOR
 I, MATHIAS A. KREBS certify the information herein is true and correct.
 Signature of Party Chief
 I, Mathias A. Krebs certify that this corner record represents work performed by me or under my direction in compliance with the "Corner Recordation Act" (70-1-101 et seq., M.C.A.)
 Signature of Surveyor & Seal
 Date: 7-3-07 Reg. No. 15260 LS
 Employer: KADENAS, LEE & JACKSON

Office of Clerk and Recorder, County of CARTER. This "corner

Sec. 29

record" was filed 173470 Fee: \$ Bk FILE-CR Pg 0

CARTER COUNTY Recorded 08/28/2007 At 11:00 AM

was noted on the Pamela J. Castleberry, Clk & Rcdr By Virginia Sudwick in

book No. _____

County Official:

Cross-Index No. R-5 T. 2 N R. S8E P.M.M.

● - corner this sheet