

1. ORIGINAL AND/OR SUBSEQUENT RECORD USED TO EVALUATE THE CORNER POSITION.
2. DESCRIPTION OF EVIDENCE FOUND, NOTE DISCREPANCIES IN THE RECORD, STATE METHOD OF IDENTIFICATION.
3. DESCRIPTION OF MONUMENT AND ACCESSORIES SET TO PERPETUATE THE CORNER POSITION.
4. SKETCH OF CORNER, SHOW ALL PERTINENT DATA WHICH CAN BEST BE SHOWN IN A SKETCH. EXAMPLE, CORNER MARKINGS, TOPOGRAPHY TIES, POSITION OF ACCESSORIES, ETC.
5. CERTIFICATION MUST BE SIGNED AND SEALED BY LAND SURVEYOR REGISTERED IN THE STATE OF MONTANA.
6. FILL IN CROSS INDEX AND SECTION DIAGRAM AT BOTTOM OF SHEET.

Fee: \$ BK CR Pg 0

CERTIFIED CORNER RECORDATION

CORNER Northeast, SEC. 29, T. 2N., R. 58E., P.M.M., CARTER COUNTY, MT

ORIGINAL RECORD: Surveyed by G. Scheetz in 1890.

SUBSEQUENT RECORD: Dependent Resurvey by William R. Bandy in 1944.

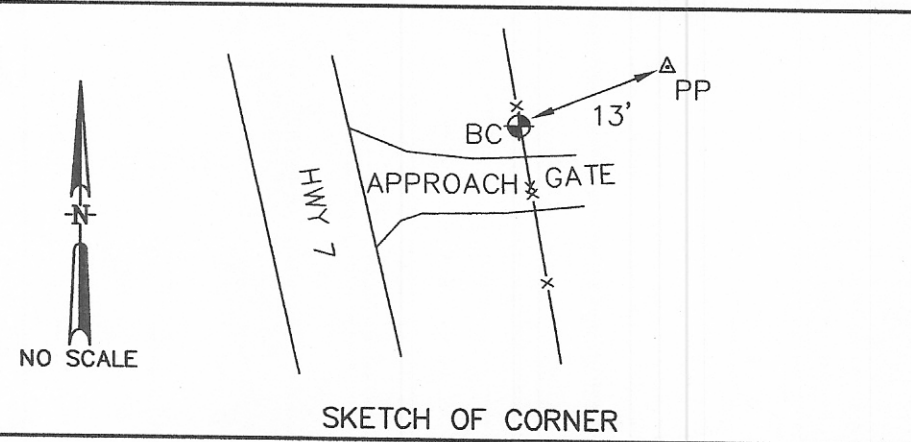
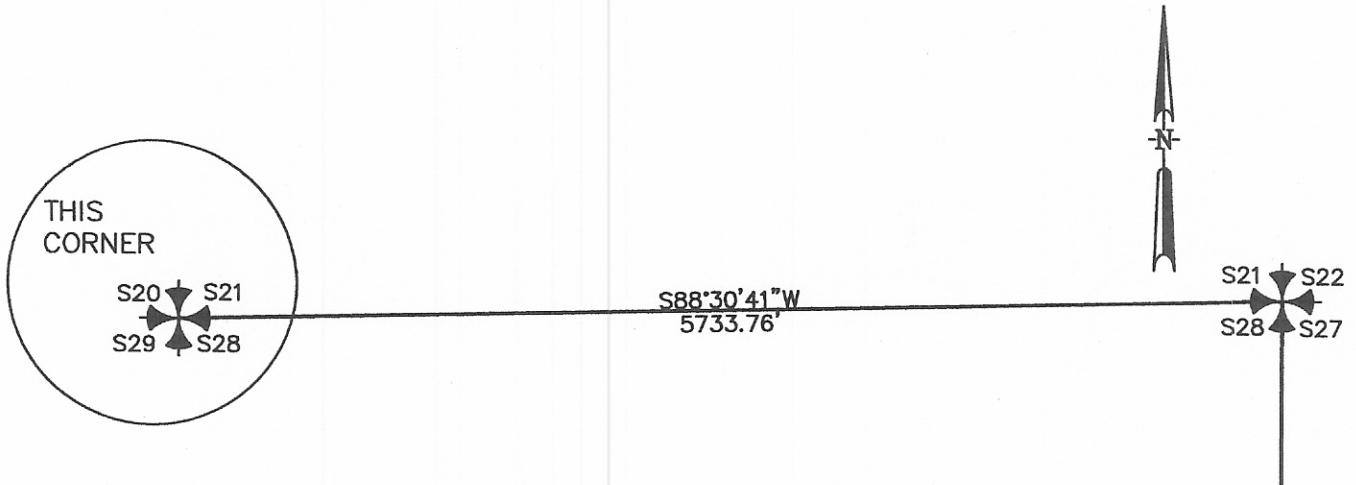
Set an iron post 3 ft. long, 2 ins. in diam., 30 ins. in the ground, with brass cap marked

T2N	R58E
S20	S21
S29	S28
1944	

dig pits 18x18x12 ins in each sec. 3 ft. dist.

EVIDENCE FOUND: Found Brass cap at north end of gate.

SET: Monument in good repair nothing new set.



CERTIFICATION

I, _____, certify the information shown is true and correct.

Signature of Ground Party Chief

I, Jimmie E. Brewer BREWER

certify that this Corner Record correctly represents work performed by me or under my direction in compliance with the "Corner Recordation Act" (79-22-101, et seq., M.C.A.)

Signature of Surveyor & Seal

Date 12-8-03 Reg. No. 7155LS

Employer: HKM Engineering Inc.

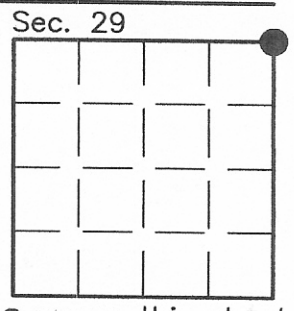
Office of Clerk and Recorder, County of _____ This "corner

record" was filed for record CARTER COUNTY Recorded 12/09/2003 At 11:00 AM

was noted on the cross-index Pamela J. Castleberry, Clk & Rcdr By Virginia Fredrick

book No. _____

County Official



● corner this sheet

Cross Index No. R-9 T. 2 N. R. 58 E. PMM