

1. ORIGINAL AND/OR SUBSEQUENT RECORD USED TO EVALUATE THE CORNER POSITION
2. DESCRIPTION OF EVIDENCE FOUND, NOTE DISCREPANCIES IN THE RECORD, STATE METHOD OF ESTABLISHING LOST OR OBLITERATED CORNERS.
3. DESCRIPTION OF MONUMENT AND ACCESSORIES SET TO PERPETUATE THE CORNER POSITION
4. SKETCH OF CORNER, SHOW ALL PERTINENT DATA THE CORNER POSITION
EXAMPLE, CORNER MARKINGS, TOPOGRAPHY TIES, POSITION OF ACCESSORIES, ETC.
5. CERTIFICATION MUST BE SIGNED AND SEALED BY LAND SURVEYOR REGISTERED IN THE STATE OF MONTANA.
6. FILL IN CROSS INDEX. AND SECTION DIAGRAM AT BOTTOM OF SHEET.

CERTIFIED CORNER RECORDATION

CORNER East Quarter, SEC. 4, T. 2N., R. 58E., P.M.M., CARTER COUNTY, MT

ORIGINAL RECORD: Surveyed by George Scheetz in 1890.

SUBSEQUENT RECORD: Surveyed by W. R. Bandy and E. Parker in 1947.

40.92 Point for the $\frac{1}{4}$ sec. cor. for secs. 3 and 4 at proportionate distance.

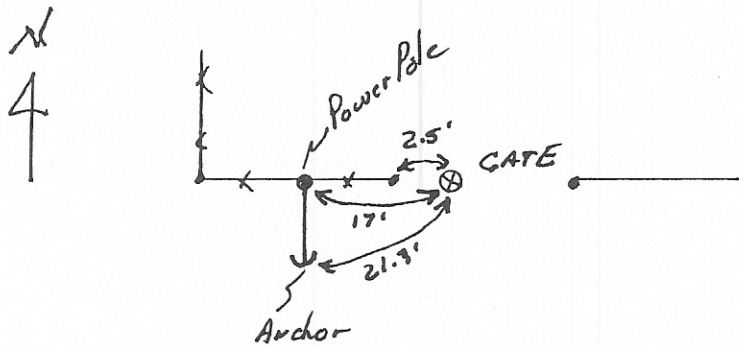
Set an iron post, 3 ft. long, 1 in. in diam., 30 ins. in the ground, with brass cap marked

$\frac{1}{4}$
 S 4 | S 3
 1947

18x18x12 ins., N. and S. of corner, 3 ft. dist. dig pits

EVIDENCE FOUND: Brass cap on 2" below ground marked as per record.

SET: Nothing new set.



SKETCH OF CORNER

CERTIFICATION

I, _____, certify the information shown is true and correct

Signature of Ground Party Chief

I, Jimmie L. Brewer, certify that this Corner Record correctly represents work performed by me or under my direction in compliance with the "Corner Recordation Act" (70-22-101, et seq., M.C.A.)

Signature of Surveyor & Seal

Date 8-25-2000, Reg. No. 7155LS

Employer: HKM Engineering Inc.

Office of Clerk and Recorder, County of Carter. This "corner

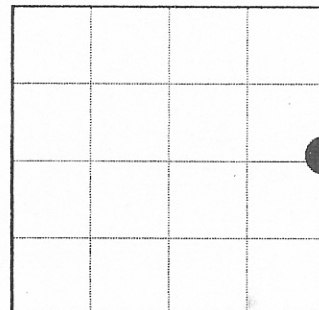
record" was filed for record on August 29, 2000.

was noted on the cross-index plat and is assigned page No. 168232

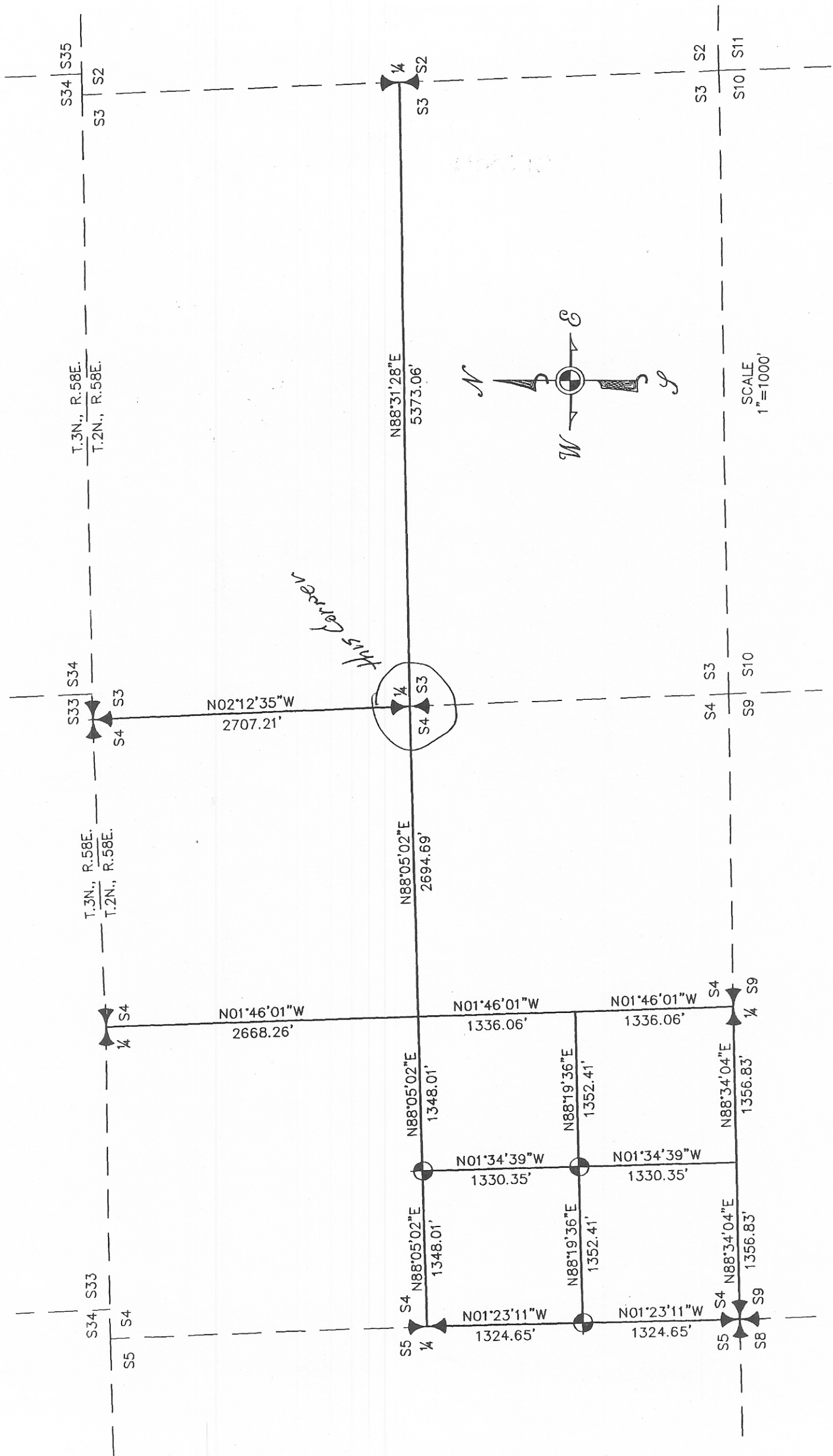
book No. _____

Virginia Ludwick
County Official

Sec. 4



● corner this sheet



S34 S35
S3 S2

T.3N., R.58E.
T.2N., R.58E.

S33 S34
S4 S3

T.3N., R.58E.
T.2N., R.58E.

S34 S33
S4 S5

1/4 S2
S3

N88°31'28"E
5373.06'

1/4 S3
S4 S3

N02°12'35"W
2707.21'

N88°05'02"E
2694.69'

N01°46'01"W
2668.26'

N88°05'02"E
1348.01'

N01°46'01"W
1336.06'

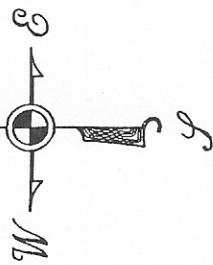
S4 S5
1/4 S4 S5

N88°19'36"E
1352.41'

N01°34'39"W
1330.35'

N88°19'36"E
1352.41'

N01°23'11"W
1324.65'



SCALE
1" = 1000'

this corner
120149 5144

S3 S2
S10 S11

S4 S3
S9 S10

S4 S9
1/4 S4 S9

N88°34'04"E
1356.83'

N88°34'04"E
1356.83'

S4 S5
S8 S9

N01°46'01"W
1336.06'

N01°34'39"W
1330.35'

N01°23'11"W
1324.65'