

102340

**CERTIFIED LAND CORNER RECORDATION**

**DESCRIPTION OF CORNER EVIDENCE FOUND, AND ORIGINAL RECORD (IF KNOWN)**

At the One-Quarter corner common to Sections 26 & 27, Township 4 North, Range 10 West, Principal Meridian Montana, Deerlodge County, Montana.

RECORD: Set 1/4 sec. cor. a post in mound of earth with pits charred stake and as per instructions.

WE FIND: Rotted wood ring of stone and soft spot 3"X3"X14" deep.

**DESCRIPTION OF MONUMENT AND ACCESSORIES ESTABLISHED TO PERPETUATE THE ORIGINAL LOCATION OF THIS CORNER:**

9/19/74

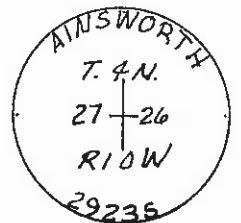
Date of work:.....

WE ESTABLISH this corner by use of terrain call and old established fence.

TO PERPETUATE this corner we set a 5/8"X24" copper clad brass capped monument, and establish the following reference monuments:

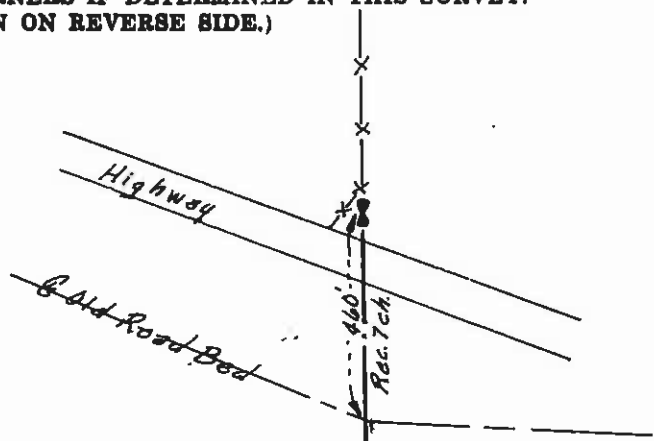
A 4" fence post bears N.08°00'W., 25.1 feet.

A 4" fence post bears S.28°00'E., 11.9 feet.



Variance used E. 19°

**SKETCH, WITH COURSE AND DISTANCE TO ADJACENT CORNERS IF DETERMINED IN THIS SURVEY. (MAY SKETCH OR PASTE REPRODUCTION ON REVERSE SIDE.)**



Surveyor's Seal

GREGORY S. MARTINSEN

I, \_\_\_\_\_  
certify that the information shown herein is true and correct.

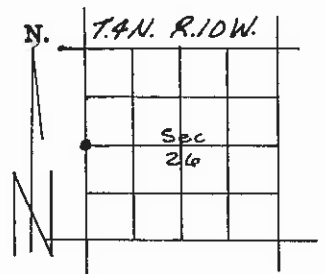
*Gregory S. MartinSEN*  
Signature of Ground Party Chief

RICHARD A. AINSWORTH

I, \_\_\_\_\_  
certify that I have carefully performed or reviewed the work done on the diagrammed corner as reported on this recordation form and approve the same.

*Richard A. Ainsworth*  
Signature of Surveyor

**DIAGRAM OF CORNER:**



● = Corner recorded on the sheet



29235

Registration Number

Office of Clerk and Recorder, County of Deer Lodge

This "corner record" was filed for record on the 30 day of Sept, 1974, was noted on the cross-index plat and is

assigned page No. 126, in book No. 1

HELEN L. SIVELL  
CLERK AND RECORDER  
DEER LODGE COUNTY  
ANACONDA, MT 59711

Cross Index No. 717 T. 4N R. 10W Mer