

111108

CERTIFIED LAND CORNER RECORDATION

DESCRIPTION OF CORNER EVIDENCE FOUND, AND ORIGINAL RECORD (IF KNOWN)

ORIGINAL RECORD:

No original record available.

FOUND:

Found stone with mound of stone on west side, X on top of stone. Stone 14 ins. long, 8 ins. wide, 28 ins. high, marked SBC on south and DLC on north.

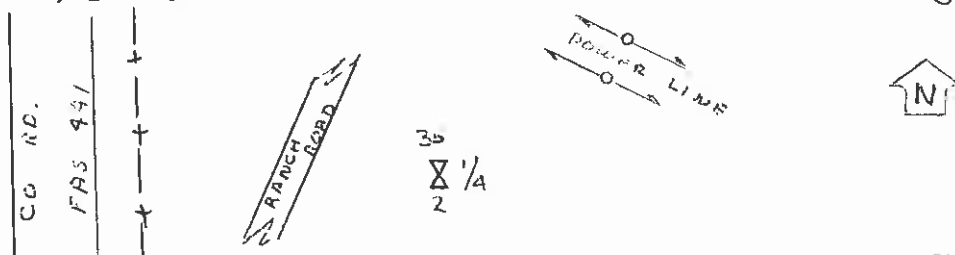
DESCRIPTION OF MONUMENT AND ACCESSORIES ESTABLISHED TO PERPETUATE THE ORIGINAL LOCATION OF THIS CORNER:

Date of work: June 8, 1977

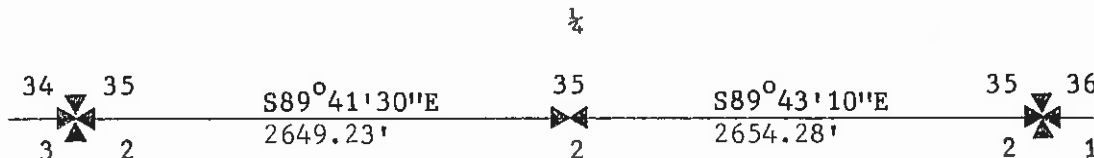
Replaced found stone with 24 ins. brass cap marked:

Sank brass cap 21 ins. in the ground, buried found stone alongside, and raised a collar of stone.

1/4 S35 T4N R10W
S2 T3N R10W
1977
CSSA Billings, MT.



SKETCH, WITH COURSE AND DISTANCE TO ADJACENT CORNERS IF DETERMINED IN THIS SURVEY. (MAY SKETCH OR PASTE REPRODUCTION ON REVERSE SIDE.)



Surveyor's Seal

I, Larry Talbot certify that the information shown herein is true and correct.

Larry Talbot
Signature of Ground Party Chief

I, Fred A. Sielbach, Jr. certify that I have carefully performed or reviewed the work done on the diagrammed corner as reported on this recordation form and approve the same.

Fred A. Sielbach, Jr.
Signature of Surveyor

DIAGRAM OF CORNER:



T4N R10W
1/4
35
2

Silver Bow County, Montana
Deer Lodge County, Montana

= Corner recorded on the sheet

786-ES
Registration Number

Office of Clerk and Recorder, County of Deer Lodge

This "corner record" was filed for record on the 22nd day of March 1978, was noted on the cross-index plat and is assigned page No. 196, in book No. 1

REGINA CONNOR Mary Char Sigut
County Official

Cross Index No. 2-19 T. 4N R. 10W Mer.