

107334

CERTIFIED LAND CORNER RECORDATION

DESCRIPTION OF CORNER EVIDENCE FOUND, AND ORIGINAL RECORD (IF KNOWN)

Original corners were all a post in a mound of earth.
The NE corner of Section 26, T4N, R10W, M.P.M. (Found rotted post 12" under ground in a ring of stone. Checks old Highway Dept. tie from U.S. Highway 10.)
The NW corner of Section 26, T4N, R10W, M.P.M. (Old jack fence intersection with North-South fence line. Present owner of land was informed by previous long time owner that this point was the Section corner. Fits pattern well.)
The South 1/4 corner of Section 26, T4N, R10W, M.P.M. (Found rotted post 8" under ground in a ring of stone.)
The SE corner of Section 26, T4N, R10W, M.P.M. (Original corner destroyed by Highway overpass. Corner was re-established from Highway Dept. ties.)
The West 1/4 corner, the North 1/4 corner and the Southwest corner of Section 26 (No evidence found.)

DESCRIPTION OF MONUMENT AND ACCESSORIES ESTABLISHED TO PERPETUATE THE ORIGINAL LOCATION OF THIS CORNER:

Date of work: July-Aug., 1971

All corners are 5/8" phi rebar with an aluminum cap marked for corner. Five foot long steel T-posts were driven along side. (Unless noted on sketch on the reverse side.)

SKETCH, WITH COURSE AND DISTANCE TO ADJACENT CORNERS IF DETERMINED IN THIS SURVEY. (MAY SKETCH OR PASTE REPRODUCTION ON REVERSE SIDE.)

SEE SKETCH ON REVERSE SIDE

Surveyor's Seal

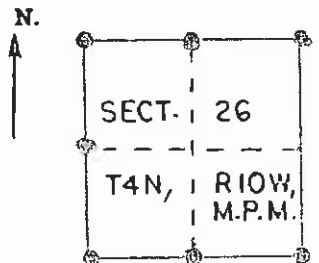


I, Martin J. McCarthy certify that the information shown herein is true and correct.
Signature of Ground Party Chief

I, Walter F. Everly certify that I have carefully performed or reviewed the work done on the diagrammed corner as reported on this recordation form and approve the same.
Signature of Surveyor

1442 ES
Registration Number

DIAGRAM OF CORNER:



● = Corner recorded on the sheet

Office of Clerk and Recorder, County of Deer Lodge

This "corner record" was filed for record on the 17th day of November 1976, was noted on the cross-index plat and is assigned page No. 166, in book No. 1

HELEN L. LOVELL County Official

Cross Index No. Sec 26 T. 4N R. 10W Mer.