

INSTRUCTIONS

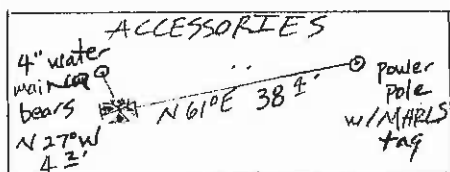
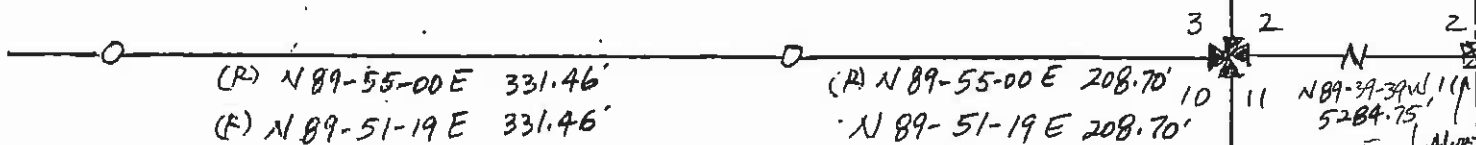
1. Original and or subsequent record used to evaluate the corner position.
2. Description of evidence found, note discrepancies in the record, state method of establishing lost or obliterated corners.
3. Description of monument and accessories set to perpetuate the corner position.
4. Sketch of corner, show all pertinent data which can best be shown in a sketch example, corner marking, topography ties, position of accessories, etc.
5. Certification must be signed and sealed by Land Surveyor registered in the State of Montana.
6. Fill in Cross Index & Section Diagram at bottom of sheet.

CERTIFIED CORNER RECORDATION

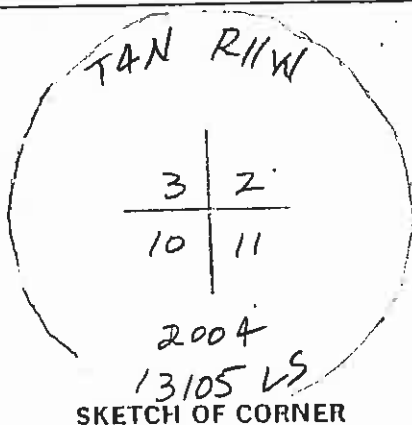
Corner SW CORNER SECTION 2 T. 4 N R. 11 W P.M.M. Arconda-Deer Lodge County

1. Original GLO - see record
2. Certificate of Survey 171-B, Ray Masters 821 S, 1985

No evidence found of original section corner. I believe the corner to have been obliterated by street & alley construction. I re-establish section corner by record call as shown by Ray Masters, 821 S on Certificate of Survey 171-B. Believe this to be best available evidence.



set No. 5 Rebar 24" long with 2" Alum Cap. Marked as shown below



CERTIFICATION

I, Tom Moody certify the information shown herein is true and correct.

Signature Ground Party Chief TOM J MOODY

I, TOM MOODY certify that this Corner Record correctly represents the work performed by me or under my direction in compliance with the "Corner Recordation Act" 170-22-101, et seq., M.C.A.

Signature of Surveyor & Seal Tom J. Moody

Date: 03-22-04 Reg. No. 13105 LS

Employer: MSTS

Sec. 2


• corner this sheet

Office of Clerk and Recorder, County of DEER LODGE. This "corner record" was filed for record on MARCH 23, 2004 was noted on the cross-index plat and is assigned page No. 9, in book No. 3

Barbara J. Vaughn, DEPUTY  
County Official