

**CERTIFIED LAND CORNER RECORDATION**

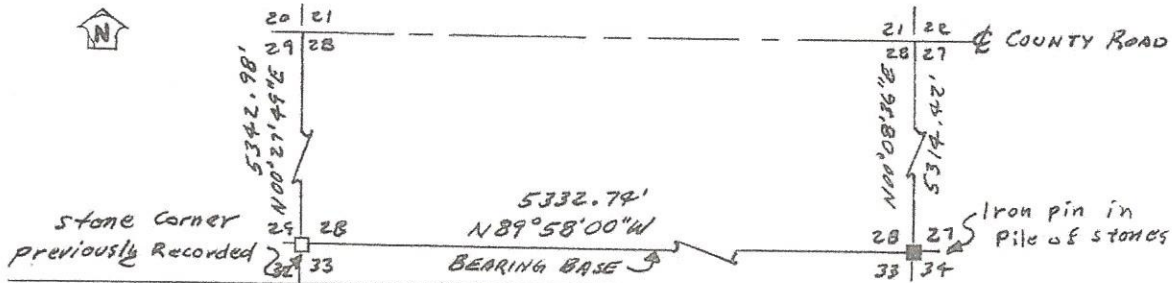
DESCRIPTION OF CORNER EVIDENCE FOUND, AND ORIGINAL RECORD (IF KNOWN)

Found a 1" iron pin with punch mark in center of top, with stones piled around it. One stone in the pile was a granite 12"x9"x5" with 3 notches on one face and 1 notch on the other face. I accepted this iron pin as the relocated corner to Sections 27, 28, 33, & 34. This iron pin sets in a North-South fence line 180' South of the County Road going Southwest out of Sheridan.

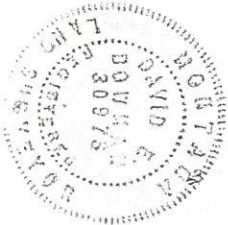
DESCRIPTION OF MONUMENT AND ACCESSORIES ESTABLISHED TO PERPETUATE THE ORIGINAL LOCATION OF THIS CORNER:

Left this corner as found. Placed lath and flagging on and in fence. Date of work: April 9, 1974

SKETCH, WITH COURSE AND DISTANCE TO ADJACENT CORNERS IF DETERMINED IN THIS SURVEY. (MAY SKETCH OR PASTE REPRODUCTION ON REVERSE SIDE.)



Surveyor's Seal



I, \_\_\_\_\_ certify that the information shown herein is true and correct.

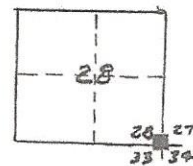
Signature of Ground Party Chief

I, David E. Bowman certify that I have carefully performed or reviewed the work done on the diagrammed corner as reported on this recordation form and approve the same.

David E. Bowman  
Signature of Surveyor

DIAGRAM OF CORNER:

N. SEC. 28  
T 4 S, R 5 W P. M. M.



■ = Corner recorded on the sheet

30975  
Registration Number

Office of Clerk and Recorder, County of MADISON

This "corner record" was filed for record on the 16th day of April, 1974, was noted on the cross-index plat and is assigned page No. 215, in book No. 1

53146

Juanita P. Melton  
County Official