

**CERTIFIED LAND CORNER RECORDATION**

DESCRIPTION OF CORNER EVIDENCE FOUND, AND ORIGINAL RECORD (IF KNOWN)

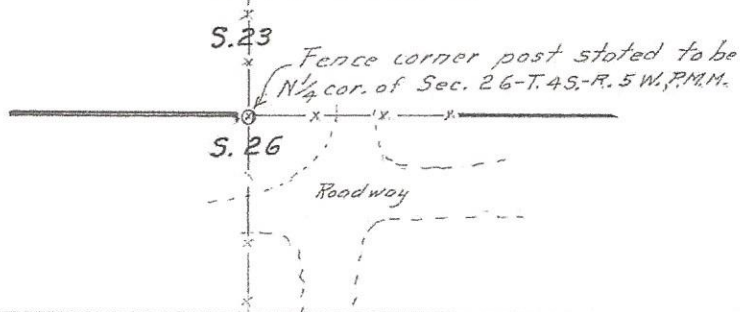
Original - A granite stone 22"x9"x8" for  $\frac{1}{4}$  Section corner pits and mound, August 20, 1869.

No evidence found of above noted monument, etc. Used fence corner claimed by adjoining property owners to be the  $\frac{1}{4}$  corner of Section 26, T. 4 S., R. 5 W., P.M.M., Madison County, Montana.

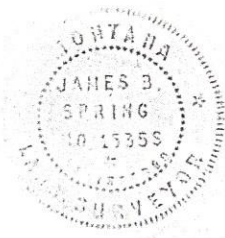
DESCRIPTION OF MONUMENT AND ACCESSORIES ESTABLISHED TO PERPETUATE THE ORIGINAL LOCATION OF THIS CORNER:

Date of work: 10-17-69

SKETCH, WITH COURSE AND DISTANCE TO ADJACENT CORNERS IF DETERMINED IN THIS SURVEY.  
(MAY SKETCH OR PASTE REPRODUCTION ON REVERSE SIDE.)



Surveyor's Seal



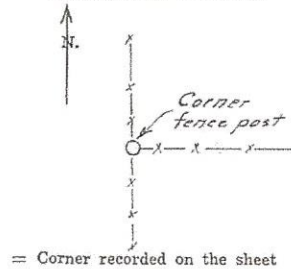
I, James B. Spring  
certify that the information shown herein is true and correct.

*James B. Spring*  
Signature of Ground Party Chief

I, James B. Spring  
certify that I have carefully performed or reviewed the work done on the diagrammed corner as reported on this recordation form and approve the same.

*James B. Spring*  
Signature of Surveyor  
1535-S  
Registration Number

DIAGRAM OF CORNER:



Office of Clerk and Recorder, County of Madison

This "corner record" was filed for record on the 2nd day of March, 1970, was noted on the cross-index plat and is assigned page No. 17A, in book No. 1.

*Mary A. Meyer*  
County Official