

CERTIFIED CORNER RECORDATION

Corner $1/4 \frac{18}{19}$ T. 4 S. R. 51 E. P.M.M. Powder River County

1908 Original GLO Record by George L. Elmer and Theodor O. Johnston, Book 5664 Page 35

"Set a sand stone, 15x10x4 ins., 10 ins. in the ground, for 1/4 sec. cor., marked 1/4 on W. face; and raise a mound of stone, 2 ft. base, 1 1/2 ft. high, N. of cor."

1992 Remonumentation by S. R. Smith

Found a stone, 20 x 10 x 4 ins., 16 ins. in the ground, marked 1/4 on north face, 1.5 ft. east of fence corner post.

At the position marked by the stone, set an aluminum pipe, 2 1/2 ins. diam., 30 ins. long, 24 ins. in the ground, with 3 1/4 ins. diam. M.D.T. aluminum cap, marked as shown below. Raised a collar of stone around the cap. Buried stone alongside monument.

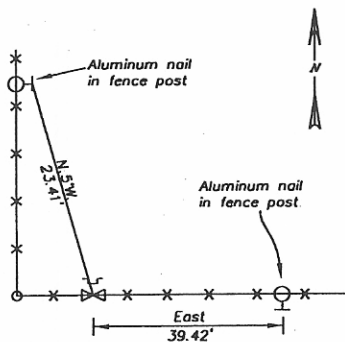
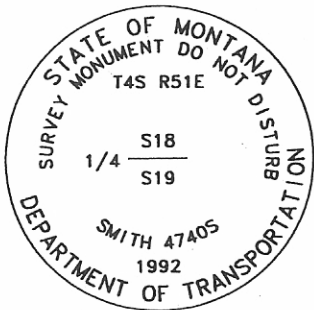
Established two references:

- An aluminum nail in fence post, south side, 1.5 ft. above ground, bears East, 39.42 ft. dist.
- An aluminum nail in fence post, east side, 1.5 ft. above ground, bears N.5°W., 23.41 ft. dist.

Set a galvanized steel witness post, 6 ft. long, with M.D.T. sticker attached, bears North, 1.0 ft. dist.

Measurements were made with a Silva hand compass (declination 13°E.) and a steel tape.

Refer to Certificate of Survey filed in conjunction with this corner recordation for ties to other section controlling corners in this area.



SKETCH OF CORNER

CERTIFICATION

I, S. R. Smith
 certify the information shown here is true and correct.
S R Smith
 Signature Ground Party Chief

I, S. R. Smith
 certify that this Corner Record currently represents work performed by me or under my direction in compliance with the "Corner Recordation Act" (70-22-101, et seq. M.C.A.)
S R Smith
 Signature of Surveyor & Seal

Reissue Date: 8/3/98 Reg. No. 4740S
 Employer: Smith Surveying

Office of Clerk and Recorder, County of Powder River. This "corner

record" was filed for record on 2-18-99 @ 1:08 pm

was noted on the cross-index plat and is assigned page No. 102881, in

book No. _____

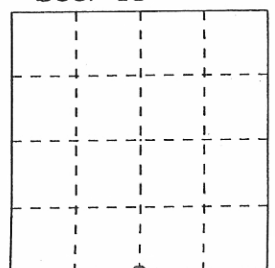
Carol B Richards, Deputy
 County Official

| | |
|----------|---|
| Indexed | ✓ |
| Compared | |

Cross Index No. N-3 T. 4 S. R. 51 E. PMM

Adopted July 1, 1981, Montana Board of Professional Engineers & Land Surveyors

Sec. 18



• corner this sheet