

INSTRUCTIONS

1. Original and/or subsequent record used to evaluate the corner position.
2. Description of evidence and, note discrepancies in the record, state method of establishment, lost or obliterated corners.
3. Description of monument and accessories set to perpetuate the corner position.
4. Sketch of corner, show all pertinent data which can best be shown in a sketch example, corner marking, topography ties, position of accessories, etc.
5. Certification must be signed and sealed by Land Surveyor registered in the State of Montana.
6. Fill in Cross Index & Section Diagram at bottom of sheet.

CERTIFIED CORNER RECORDATION

CORNER EastQuarter SEC. 33, T. 4 S., R. 51 E., P.M.M., Powder River COUNTY

ORIGINAL RECORD: Surveyed by Geo. L. Elmer and Theodore O. Johnson, deputy surveyors, under Contract No. 540, in 1908.

SUBSEQUENT RECORD: Dependent Resurvey by Ranney Y. Lyman and Andrew Nelson in April 1946 - September 1947.

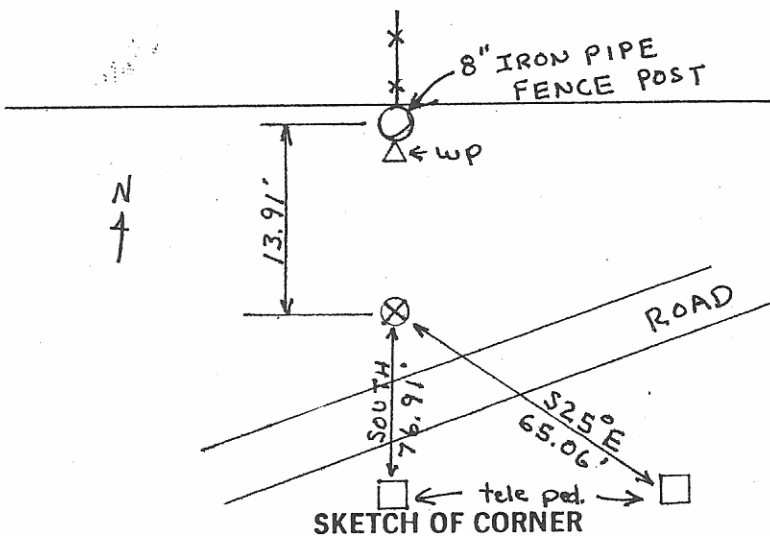
38.23 Chains Point for the 1/4 sec. cor. of secs. 33 and 34, at proportionate distance.
Set an iron post, 3 ft. long, 1 ins. diam., 38 ins. in the ground, with deposit of broken glass at base of post, with brass cap marked

1/4
S33 | S34
|
1946

Surveyed by Joe S. Dent, August 1986.
Certified corner recordation # 112976 filed in the Powder River county court house. Original corner destroyed in the in the 1940's and was replaced with a 5/8" rebar and has been used all this time. In 1986 I could not find rebar, therefore I reset corner 2639.0 feet from the north section corner. The alignment of this section line had been aligned and marked with rebar years ago and they are still in place .

FOUND: Found 1/2" rebar with 1 1/4" alum. cap 2" below ground. Marked
1/4
S33 | S34
2357S

SET: Monument in good condition. Placed a 5 1/2" galv. steel witness post at end of N-S fence, north of monument.



CERTIFICATION

I, Quinn Wright
certify the information shown here is true and correct.

Quinn Wright
Signature, Ground Party Chief

I, James L. Dwyer
certify that this Corner Record correctly represents work performed by me or under my direction in compliance with the "Corner Recordation Act" (70-22-101 et seq., M.C.A.)

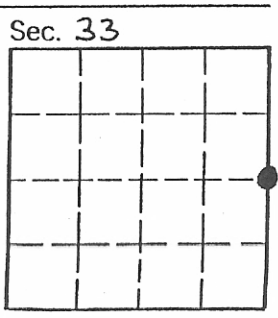
Quinn Wright
Signature of Surveyor & Seal

Date: 12-17-92 Reg. No. 7155LS

Employer: HKM ASSOCIATES

Office of Clerk and Recorder, County of Powder River. This "corner record" was filed for record on March 17, 1993 @ 10:02 Am was noted on the cross-index plat and is assigned page No. 118808, in book No. _____

Carole R. Considine Deputy
County Official



Indexed	<input checked="" type="checkbox"/>
Compared	<input checked="" type="checkbox"/>

Cross Index No. X-13 T. 4S R. 51E PMM

• - corner this sheet