

INSTRUCTIONS

1. Original and/or subsequent record used to evaluate the corner position.
2. Description of evidence found, note discrepancies in the record, state method of establishing lost or obliterated corners.
3. Description of monument and accessories set to perpetuate the corner position.
4. Sketch of corner, show all pertinent data which can best be shown in a sketch example, corner marking, topography ties, position of accessories, etc.
5. Certification must be signed and sealed by Land Surveyor registered in the State of Montana.
6. Fill in Cross Index & Section Diagram at bottom of sheet.

CERTIFIED CORNER RECORDATION

Corner

28	27
33	34

 T. 5N R. 9W P.M.M. DEER LODGE County

1. 1869 - WALTER W. JOHNSON

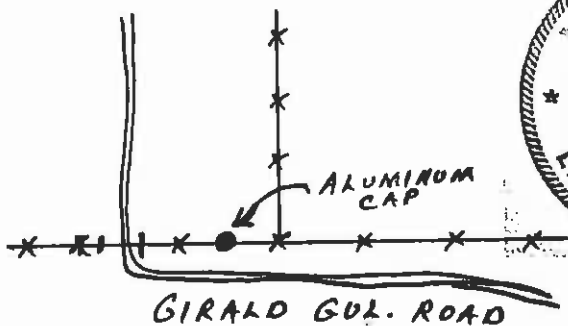
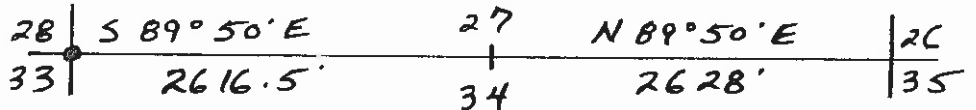
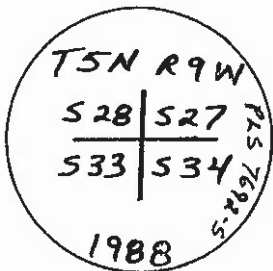
SET A GRANITE STONE, 12 X 10 X 8 INS. WITH PITS, MARKED STONE AS PER INSTRUCTIONS.

2. 1988 - WELDON

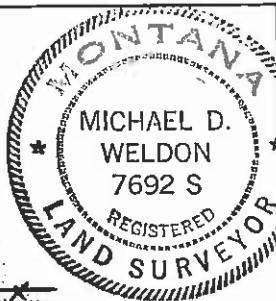
FOUND A GRANITE STONE 7" X 8" X 7" MARKED WITH 3 NOTCHES ON W. FACE & POSSIBLY 1 NOTCH ON E. FACE. I ACCEPT THIS AS ORIGINAL CORNER.

3. IN PLACE OF STONE, I SET A 2 1/2" X 30" ALUMINUM PIPE W/ 3" CAP MARKED AS SHOWN.

AN E-W-N RAILROAD TIE FENCE CORNER BRS. JUST TO EAST A FEW FEET & GATE IN E-W FENCE FOR ROAD BRS. W ≈ 15 FEET.



SKETCH OF CORNER



CERTIFICATION

I, MICHAEL WELDON, certify the information shown herein is true and correct.

I, MICHAEL WELDON, certify that this Corner Record correctly represents work performed by me or under my direction in compliance with the "Corner Recordation Act", Chapter 102, M.C.A.

Signature: Michael Weldon
 Signature of Surveyor & Seal

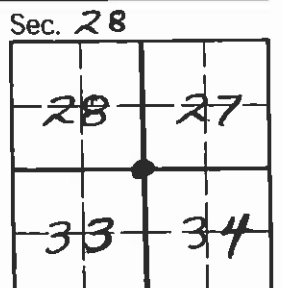
Date: 3/89 Reg. No. 7692-S

Employer: U.S.F.S.

133877

Office of Clerk and Recorder, County of Deer Lodge. This "corner record" was filed for record on 30 March 1989 was noted on the cross-index plat and is assigned page No. 279, in book No. 2

Cheryl J. Beatty
County Official



Cross Index No. V-13 T. 5N R. 9W P.M.M.

• - corner this sheet