

CERTIFIED LAND CORNER RECORDATION

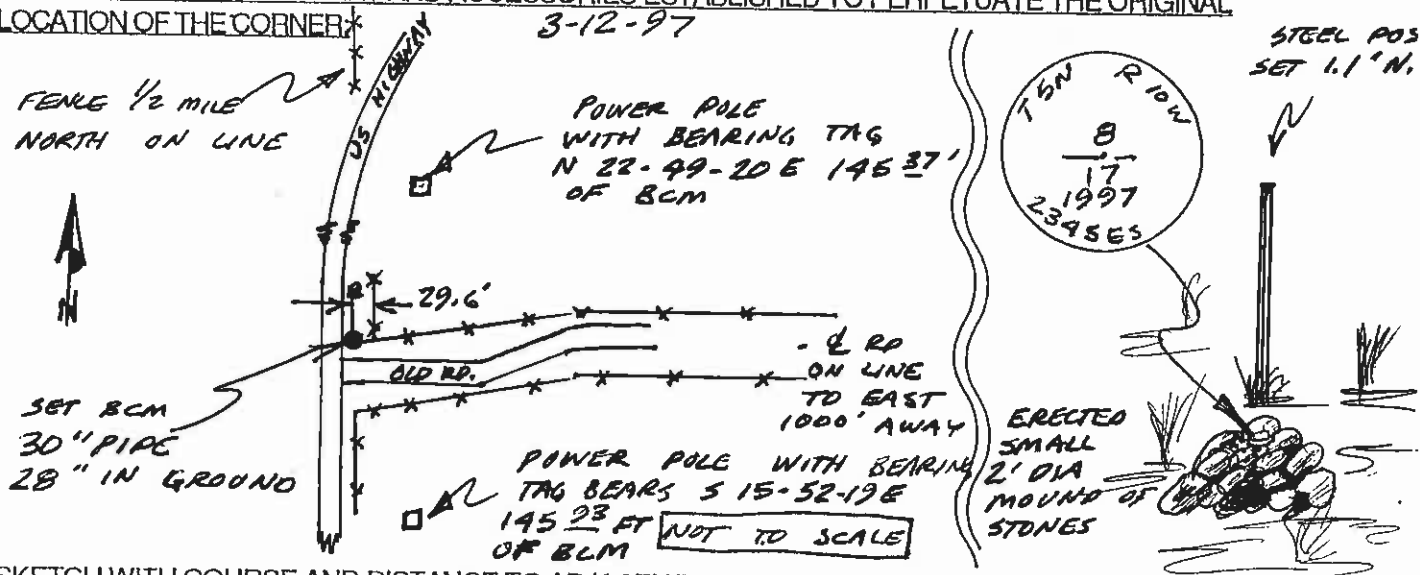
DESCRIPTION OF CORNER EVIDENCE FOUND AND ORIGINAL RECORD, IF KNOWN:

Nov. 1868 W.W. JOHNSON DEP. SURVEYOR
 SET 1/4 SEC. COR. A POST IN A MOUND OF EARTH
 WITH PITS CHARRED STAKE AND AS PER INSTRUCTIONS

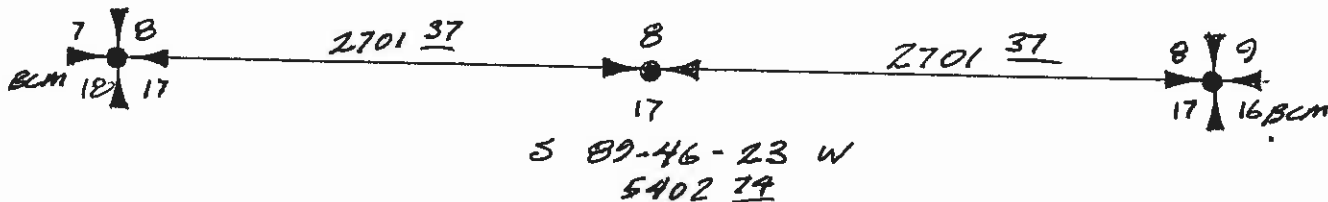
FOUND: No EVIDENCE OF ORIGINAL POST IN NEW
 HIGHWAY DITCH

FENCE 2640 ± TO NORTH IS ON-LINE WITH SINGLE
 PROPORTION MEASUREMENT (ACCEPTED)

DESCRIPTION OF MONUMENT AND ACCESSORIES ESTABLISHED TO PERPETUATE THE ORIGINAL
 LOCATION OF THE CORNER:



SKETCH WITH COURSE AND DISTANCE TO ADJACENT CORNERS IF DETERMINED IN THIS SURVEY;
 (MAY SKETCH OR PASTE REPRODUCTION ON REVERSE SIDE)



Surveyor's Seal



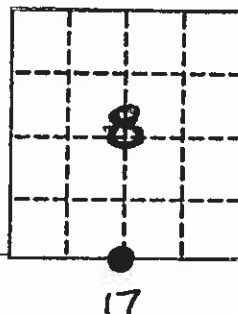
I, Gordon E. Sorenson certify that the information shown herein is true and correct, and further certify that I have carefully performed or reviewed the work done on the diagrammed corner as reported on this recordation form and approve the same.

[Signature] dated: 3/13/97

Gordon E. Sorenson, PE/RLS
 Montana Reg. No. 2345ES

[Signature] dated: 3-13-97
 Field Party Chief

DIAGRAM OF CORNER



Office of the Clerk and Recorder, DEER LODGE County, State of Montana:

This 'corner record' was filed for record on the 3RD day of APRIL, 1997,
 was noted on the cross index plat and is assigned page No. 427 in book No. 2

Time: _____ M.

[Signature] / DEPUTY
 COUNTY OFFICIAL

CROSS INDEX NO. V-7, T. 5N, R. 10W, PMM