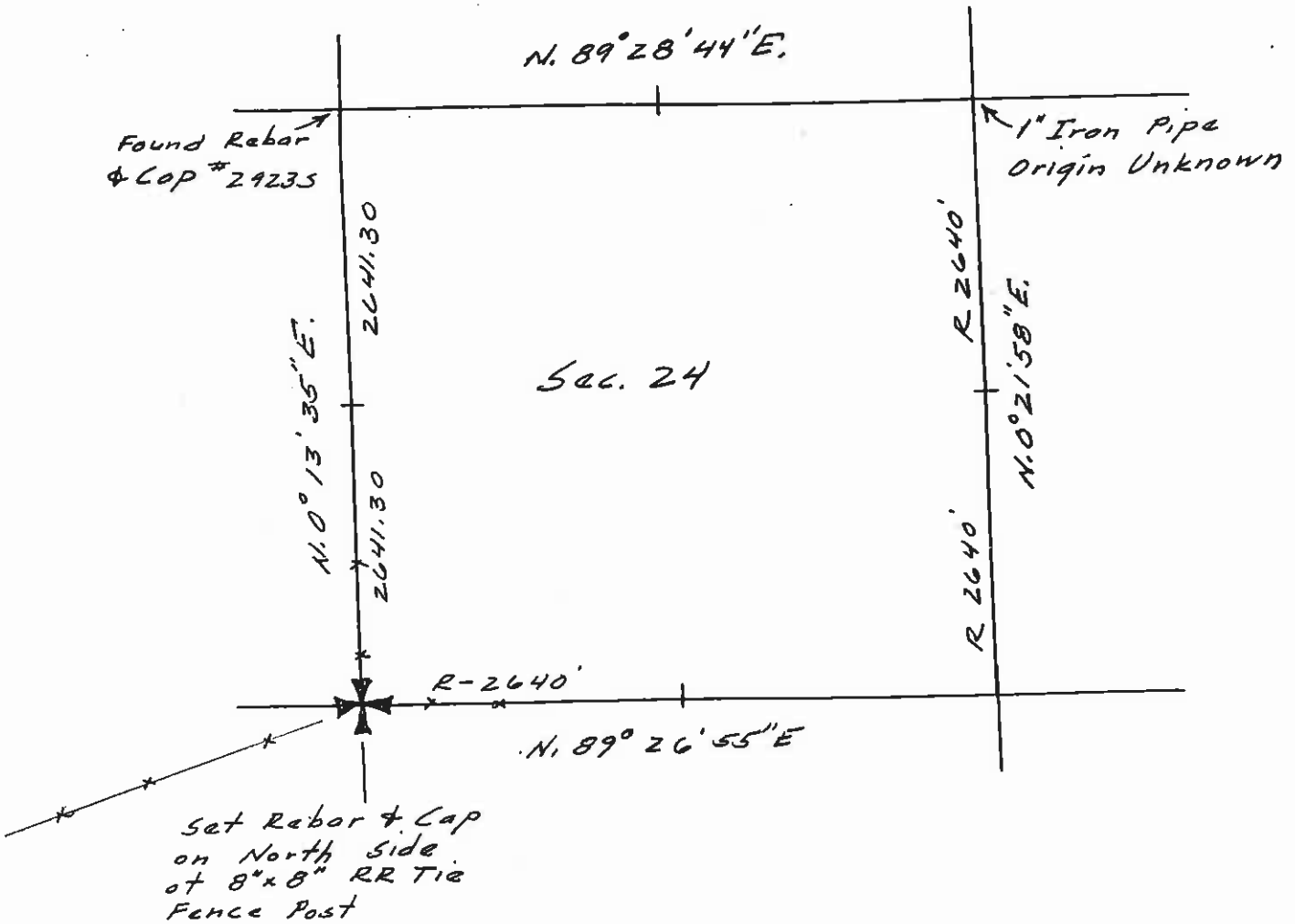


INSTRUCTIONS

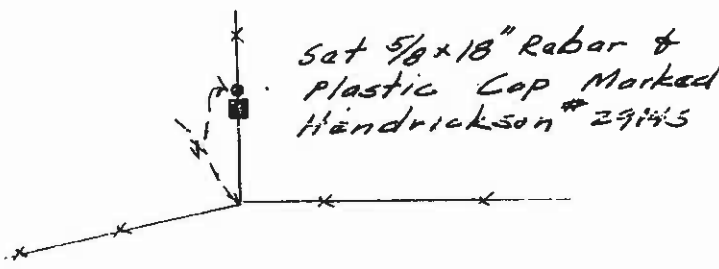
1. ... and or subsequent record used to evaluate the corner position.
2. ... description of evidence found, note discrepancies in the record, state method.
3. ... establishing lost or obliterated corners.
4. Description of monument and accessories set to perpetuate the corner position.
5. Sketch of corner, show all pertinent data which can best be shown in a sketch example, corner marking, topography ties, position of accessories, etc.
6. Certification must be signed and sealed by Registered Land Surveyor in State of Montana.
7. Fill in Cross Index & Section Diagram at bottom of sheet.

CERTIFIED CORNER RECORDATION

Corner SE Corner Sec. 24 T. 5 N. R. 10 W P.M.M. Dear Lodge County



Set Rebar & Cap on North Side of 8"x8" RR Tie Fence Post



SKETCH OF CORNER

CERTIFICATION

I, _____ certify the information shown herein is true and correct.

Signature of Grant Party Chief
 I, Tom Hendrickson certify that this Corner Record correctly represents work performed by me or under my direction in compliance with the "Corner Recordation Act" (70-22-101, et. seq., M.D.A.)

Signature of Surveyor & Seal
 Date: 1-18-93 Reg. No.: 29145
 Employer: SOA

Office of Clerk and Recorder, County of Dear Lodge. This "corner record" was filed for record on the 22 day of February 1993 was noted on the cross-index plat and is assigned page No. 305 in book No. 2

Cheryl D. Batty
 County Official

Sec. 24
