

INSTRUCTIONS

1. and/or subsequent record used to evaluate the corner position. In the event of evidence found, note discrepancies in the record, state method of establishing lost or

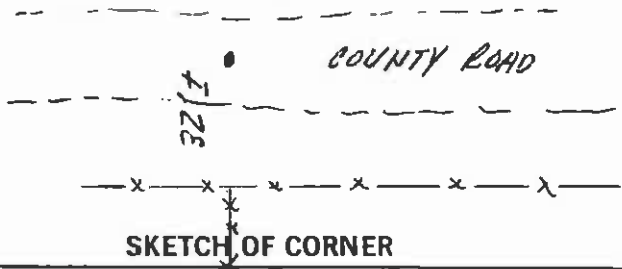
- 2. Description of monument and accessories set to perpetuate the corner position.
- 3. Sketch of corner, show all pertinent data which can best be shown in a sketch example, corner marking, topography ties, position of accessories, etc.
- 4. Certification must be signed and sealed by Land Surveyor registered in the State of Montana.
- 5. Fill in Cross Index & Section Diagram at bottom of sheet.

CERTIFIED CORNER RECORDATION

Corner Sec. Cor. Secs. 1-2 T. 5N R. 10W P.M.M. Deer Lodge County

- 1. Record: A post in a mound of earth with pits-charred stake as per instructions.
- 2. No evidence of original corner found. Corner was established at proportional distance from a fence corner 2 miles south and 1 mile north for north-south position and in line with a fence which runs to the south for east-west position.
- 3. Set a #4x24" re-bar with yellow plastic cap (Duncan 4123-S) in center of County road (buried approx. 4" under surface).

See sketch on reverse side of this form and C.O.S. for relocation of common boundary filed.



CERTIFICATION

I, CARY DUNCAN certify the information shown herein is true and correct.

Signature Ground Party Chief  
CARY DUNCAN

I, CARY DUNCAN certify that this Corner Record represents work performed by me or under my direction in compliance with the "Corner Recordation Act" (70-22-201, et seq., M.C.A.)

Signature of Surveyor  
CARY DUNCAN

Date: 9-26-91 Reg. No. 4123-S

Employer: \_\_\_\_\_

Office of Clerk and Recorder, County of Deer Lodge. This "corner record" was filed for record on October 1, 1991 was noted on the cross-index plat and is assigned page No. 288, in book No. 3 By Marion L. Hahn, Deputy, County Official

Sec. 1


Cross Index No. A-21 T. 5N R. 10W P.M.M.