

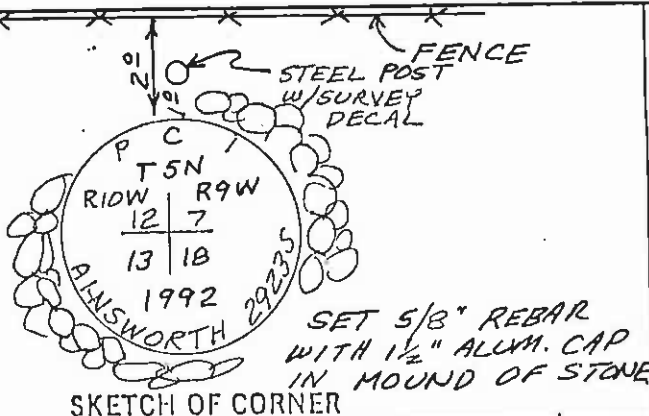
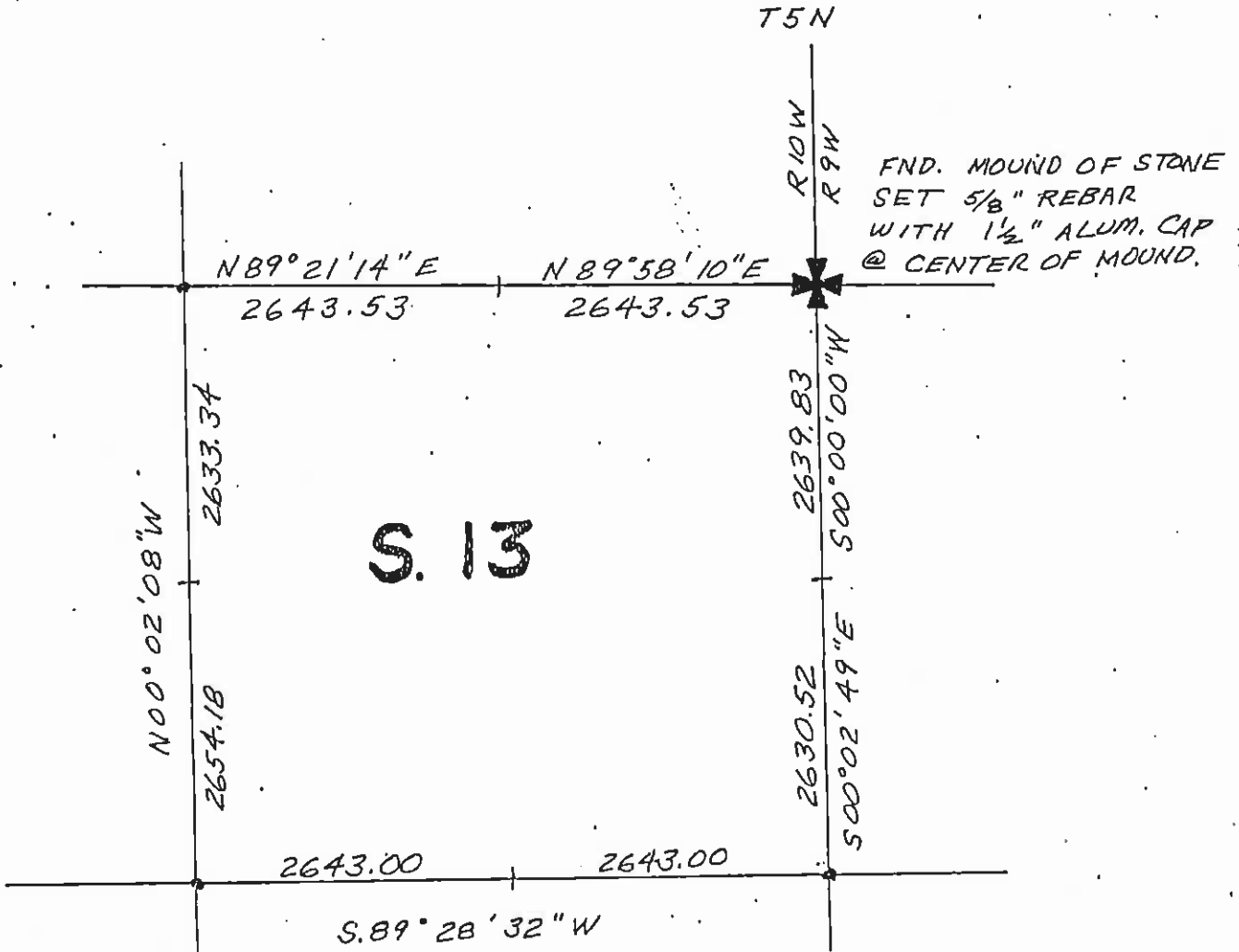
INSTRUCTIONS

1. and/or subsequent record used to evaluate the corner position.
2. Description of evidence found, note discrepancies in the record, state method of establishing lost or obliterated corners.
3. Description of monument and accessories set in perpetuity the corner position.
4. Sketch of corner, show all pertinent data which can best be shown in a sketch example, corner marking, topography ties, position of accessories, etc.
5. Certification must be signed and sealed by Land Surveyor registered in the State of Montana.
6. Fill in Cross Index & Section Diagram at bottom of sheet.

Corner

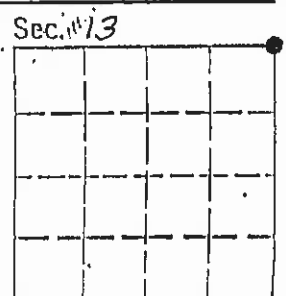
12	7
13	18

 CERTIFIED CORNER RECORDATION T. 5N R. 10W P.M.M. Deer Lodge County



CERTIFICATION
 I, Duane G. Schmitz
 certify the information shown herein is true and correct.
Duane G. Schmitz
 Signature Ground Party Chief
 I, Richard A. Ainsworth
 certify that this Corner Record correctly represents work performed by me or under my direction in compliance with the "Corner Recordation Act" (Mont. Code Annotated, M.C.A.)
Richard A. Ainsworth
 Signature of Surveyor & Seal
 Date: 11/19/92
 Employer: Professional Consultants, Inc.

Office of Clerk and Recorder, County of Deer Lodge, This "corner record" was filed for record on NOV 14 1992 was noted on the cross-index plat and is assigned page No. 299, in book No. 2 by Marian H. Steinhilber, Deputy County Official



• corner this sheet