

107335

CERTIFIED LAND CORNER RECORDATION

DESCRIPTION OF CORNER EVIDENCE FOUND, AND ORIGINAL RECORD (IF KNOWN)

The Northwest corner, the North 1/4 corner, the West 1/4 corner and the South-east corner of Section 19, Township 5 North, Range 11 West, Montana Principal Meridian were all found and are original stones in place, well marked and well preserved.

The South 1/4 corner of Section 24, Township 5 North, Range 12 West, Montana Principal Meridian - (A brass cap marked South 1/4).

The South 1/4 corner of Section 19, T5N, R11W. (Original stone was found lying at the East side of access road to homesites. It was moved when road was put in).

The Southwest corner of Section 19, T5N, R11W. (Corner was destroyed and no evidence found. Original corner was a limestone, 20"x10"x8").

DESCRIPTION OF MONUMENT AND ACCESSORIES ESTABLISHED TO PERPETUATE THE ORIGINAL LOCATION OF THIS CORNER:

The South 1/4 corner of Section 19, Township 5 North, Range 11 West, Montana Principal Meridian was reestablished by terrain ties from the original field notes, by agreement of area residents of where the corner was located prior to road construction and by surveying between the known corners of the Section. (See sketch on back)

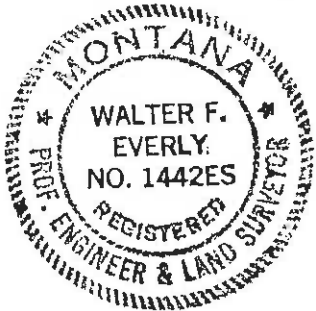
Date of work: March, 19

The Southwest corner of Section 19, T5N, R11W, MPM was reestablished by surveying between known points and by researching official field notes and plats (See sketch on back)

SKETCH, WITH COURSE AND DISTANCE TO ADJACENT CORNERS IF DETERMINED IN THIS SURVEY. (MAY SKETCH OR PASTE REPRODUCTION ON REVERSE SIDE.)

SEE REVERSE SIDE

Surveyor's Seal



I, Martin J. McCarthy certify that the information shown herein is true and correct.

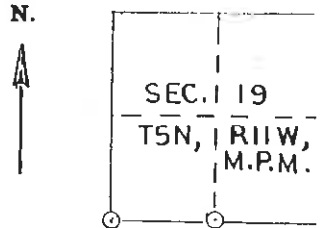
Signature of Martin J. McCarthy, Signature of Ground Party Chief

I, Walter F. Everly certify that I have carefully performed or reviewed the work done on the diagrammed corner as reported on this recordation form and approve the same.

Signature of Walter F. Everly, Signature of Surveyor

1442 ES Registration Number

DIAGRAM OF CORNER:



⊙ = Corner recorded on the sheet

Office of Clerk and Recorder, County of Deer Lodge

This "corner record" was filed for record on the 17th day of November 1976 assigned page No. 1167, in book No. 1

HELEN L. LOVELL County Official

Cross Index No. 50019 T. 5N R. 11W Mer.

R-1



SCALE: 1"=1000' NOTE: BEARINGS ESTABLISHED BY SOLAR OBSERVATIONS.

