

112256  
**CERTIFIED LAND CORNER RECORDATION**

DESCRIPTION OF CORNER EVIDENCE FOUND, AND ORIGINAL RECORD (IF KNOWN)

Record: Corner to Sections 23, 24, 25, 26, T.5N., R.11W., limestone rock  
 + 10 in. by 8 in. 7 inches out of the ground with 2 notches on the  
 Found south and 1 on the east faces with mound of stone. Since this  
 corner was well marked no further monumentation was necessary.

DESCRIPTION OF MONUMENT AND ACCESSORIES ESTABLISHED  
 TO PERPETUATE THE ORIGINAL LOCATION OF THIS CORNER:

Date of work: 8/2/78

Record: 1/4 corner between Sections 25 and 26, granite stone 9 in. by 5 in.  
 + 5 inches out of the ground, 1/4 marked on west face sits on old fence  
 Found line. Raised amount of stone.

SKETCH, WITH COURSE AND DISTANCE TO ADJACENT CORNERS IF DETERMINED IN THIS SURVEY.  
 (MAY SKETCH OR PASTE REPRODUCTION ON REVERSE SIDE.)

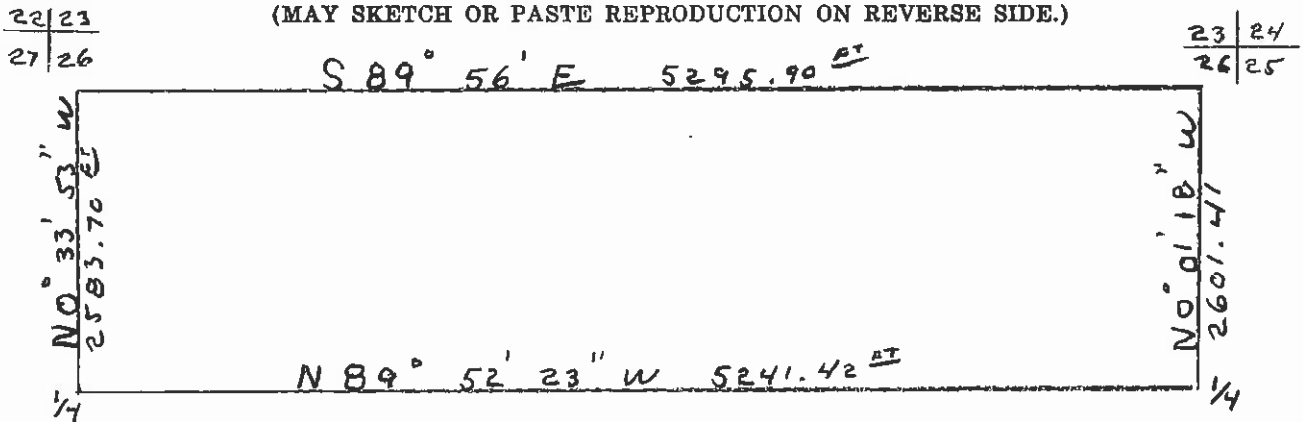
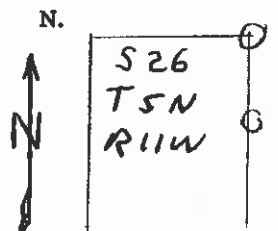
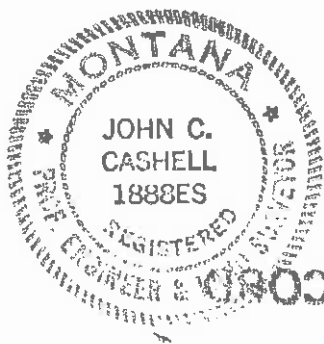


DIAGRAM OF CORNER:



⊙ = Corner recorded on the sheet

Surveyor's Seal



I, M. H. Redfern  
 certify that the information shown herein is true and correct.

*M. H. Redfern*  
 Signature of Ground Party Chief

I, John C. Cashell  
 certify that I have carefully performed or reviewed the work done on the diagrammed corner as reported on this recordation form and approve the same.

*John C. Cashell*  
 Signature of Surveyor

1888 ES  
 Registration Number

Office of Clerk and Recorder, County of Deer Lodge

This "corner record" was filed for record on the 24th day of August, 1978, was noted on the cross-index plat and is assigned page No. 206, in book No. 1

*Polly Blume*  
 County Official