

INSTRUCTIONS

1. al and/or subsequent record used to evaluate the corner position.
2. Option of evidence found, note discrepancies in the record, state method of establishing lost or obliterated corners.
3. Description of monument and accessories set to perpetuate the corner position.
4. Sketch of corner, show all pertinent data which can best be shown in a sketch example, corner marking, topography lies, position of accessories, etc.
5. Certification must be signed and sealed by Land Surveyor registered in the State of Montana.
6. Fill in Cross Index & Section Diagram at bottom of sheet.

CERTIFIED CORNER RECORDATION

Corner 23/24 / 26/25 T. 5N R. 11W P.M.M. DEER LODGE County

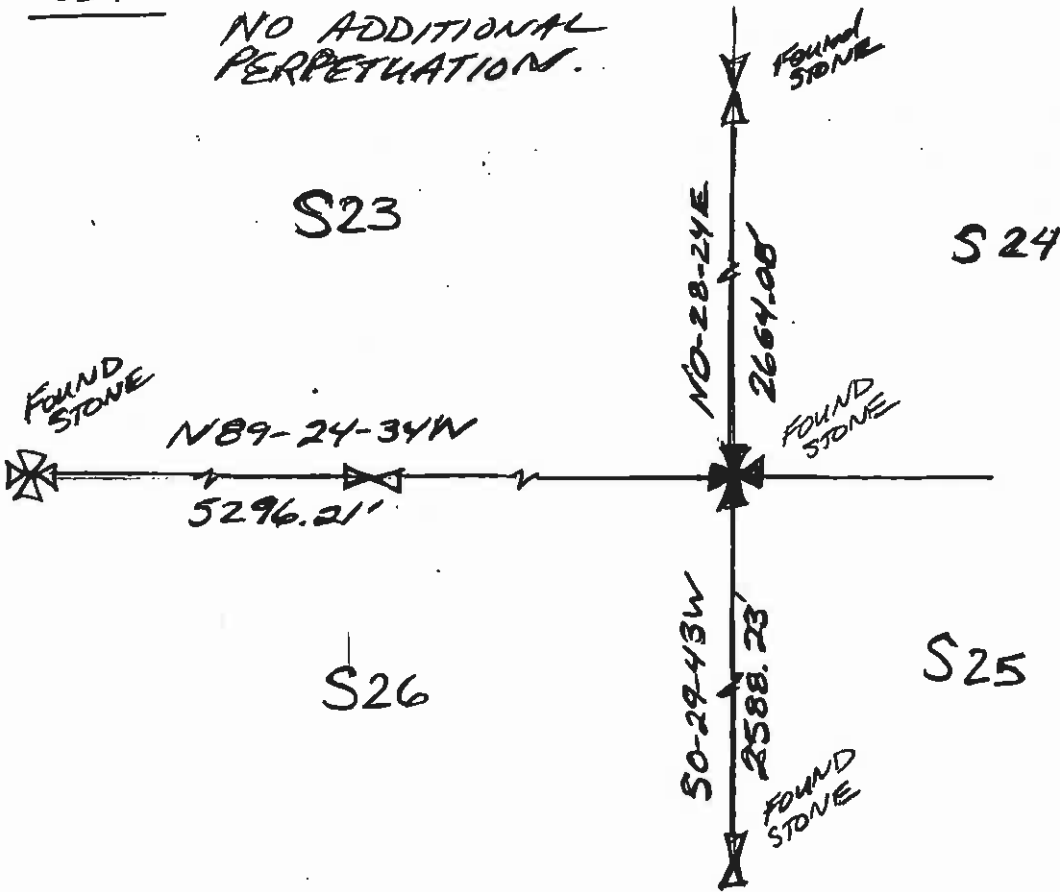
RECORD (1) GENERAL LAND OFFICE SURVEY, SIZER, 1891.
 (SEE GLO NOTES FOR RECORD INFORMATION)
(2) CERTIFICATE OF SURVEY # 29C, HENDRICKS, 1273ES, 1978.
 "FOUND LIMESTONE ROCK 11" X 9" X 8" ABOVE GROUND WITH TWO NOTCHES ON SOUTH FACE AND ONE NOTCH ON EAST FACE,"

FOUND:

FOUND STONE OF RECORD SIZE & MARKS, PER 1273ES.

SET

NO ADDITIONAL PERPETUATION.



SKETCH OF CORNER

CERTIFICATION

I, _____, certify the information shown herein is true and correct.

Signature Ground Party Chief

BRIAN D. THOMPSON

I, _____, certify that this Corner Record correctly represents work performed by me or under my direction in compliance with the "Corner Recordation Act" (70-22-101, et seq., M.C.A.)

Brian D. Thompson
 Signature of Surveyor & Seal

Date: 3/26/97 Reg. No. 8795LS

Employer: PIONEER TECHNICAL

Office of Clerk and Recorder, County of DEER LODGE. This "corner record" was filed for record on APRIL 2, 1997 was noted on the cross-index plat and is assigned page No. 423, in book No. 2 Barbara J. Vaughn / DEPUTY County Official

Sec.	
23	

Cross Index No. R-21 T. 5N R. 11W P.M.M.

• - corner this sheet