

INSTRUCTIONS

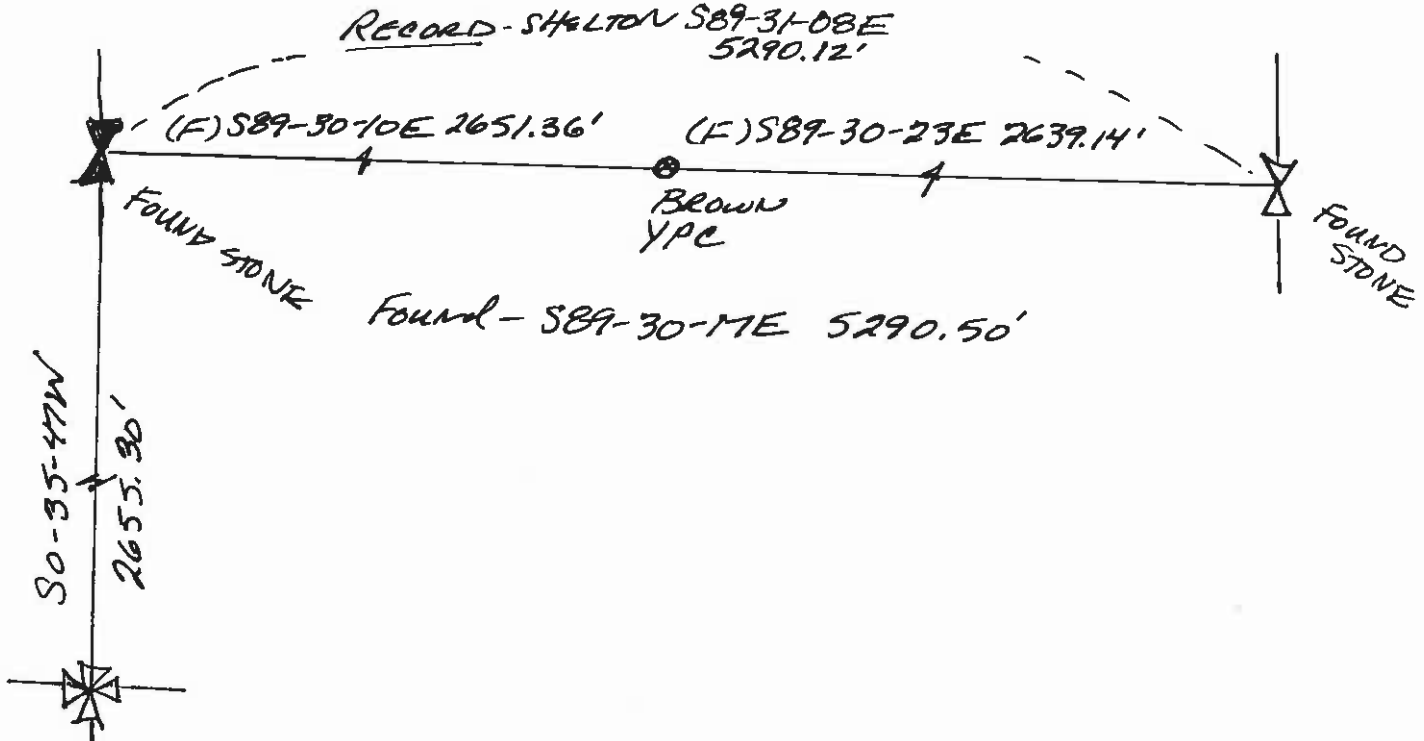
1. Final and/or subsequent record used to evaluate the corner position.
2. Description of evidence found, note discrepancies in the record, state method of establishing lost or other corners.
3. Description of monument and accessories set to perpetuate the corner position.
4. Sketch of corner, show all pertinent data which can best be shown in a sketch example, corner marking, topography (lies, position of accessories, etc.
5. Certification must be signed and sealed by Land Surveyor registered in the State of Montana.
6. Fill in Cross Index & Section Diagram at bottom of sheet.

CERTIFIED CORNER RECORDATION

Corner W 1/4 S23 T. 5N R. 11W P.M.M. DEER LODGE County

RECORD (1) GENERAL LAND OFFICE SURVEY, SIZER, 1891
 (SEE GLO NOTES FOR RECORD INFORMATION)
(2) R. SHELTON, 3538ES, 1976 "FOUND STONE" LOST CREEK PARCELS
FOUND STONE OF RECORD DIMENSIONS & BT'S
MKD. "1/4"

SET NOTHING.



SKETCH OF CORNER

CERTIFICATION

I, _____
 certify the information shown herein is true and correct.

Signature Ground Party Chief

I, BRIAN D. THOMPSON

certify that this Corner Record correctly represents work performed by me or under my direction in compliance with the "Corner Recordation Act" (70-22-101, et seq. M.C.A.)

Brian D. Thompson
 Signature of Surveyor & Seal

Date: 3/26/97 Reg. No. 8795LS

Employer: PIONEER TECH INC.

Office of Clerk and Recorder, County of DEER LODGE. This "corner record" was filed for record on APRIL 2, 1997 was noted on the cross-index plat and is assigned page No. 421, in book No. 2

Barbara J. Vaughn / DEPUTY
 County Official

Cross Index No. P-17 T. 5N R. 11W P.M.M.

