

110843

CERTIFIED LAND CORNER RECORDATION

DESCRIPTION OF CORNER EVIDENCE FOUND, AND ORIGINAL RECORD (IF KNOWN)

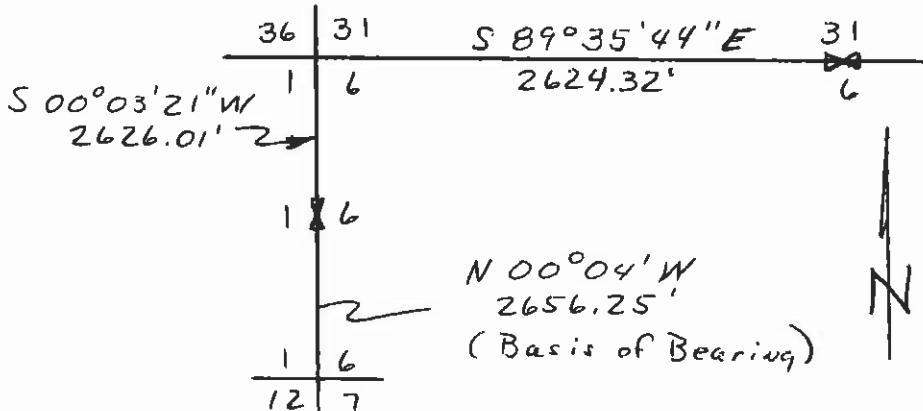
- 1. Corner to T 5 & 6 N, R 10 & 11 W
Found & Record: A white quartzite stone 9" x 9" x 8" out of the ground marked with 6 notches on each face. (fences N, E, & W.)
- 2. 1/4 Corner between Section 1, T.5N., R.11W., & Section 6, T.5N., R.10W.
Found & Record: Brown quartzite stone 11" x 8" x 6" out of ground marked 1/4 on E face.
- 3. 1/4 Corner between Section 6, T.5N., R.10W., & Section 31, T.6N., R.10W.
Record: Post and pits - no evidence found.
- 4. Corner to Sections 6 & 7, T.5N., R.10W., & Sections 1 & 12, T.5N., R.11W.
Found & Record: Fined grained granite stone 6" x 7" x 5" out of ground, 5 notches on S. side and 1 notch on N. side. (fences E, W, &

DESCRIPTION OF MONUMENT AND ACCESSORIES ESTABLISHED TO PERPETUATE THE ORIGINAL LOCATION OF THIS CORNER:

Date of work: Dec. 1977

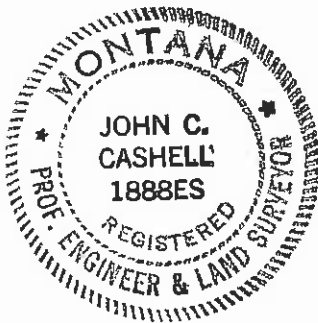
- 1, 2, & 4. No further monumentation required.
- 3. Set 5/8" x 24" rebar at proportionate position with yellow plastic cap marked "ALPHA ENGRS 1888 ES" 1/4 $\frac{31}{6}$ T.5N., R.10W.

SKETCH, WITH COURSE AND DISTANCE TO ADJACENT CORNERS IF DETERMINED IN THIS SURVEY. (MAY SKETCH OR PASTE REPRODUCTION ON REVERSE SIDE.)



Section 6
T.5N., R.10W.

Surveyor's Seal



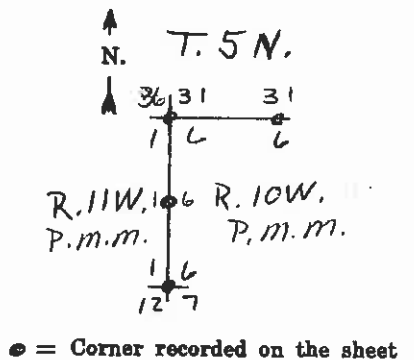
I, David M. Albert
certify that the information shown herein is true and correct.

David M. Albert
Signature of Ground Party Chief

I, John C. Cashell
certify that I have carefully performed or reviewed the work done on the diagrammed corner as reported on this recordation form and approve the same.

John C. Cashell
Signature of Surveyor

DIAGRAM OF CORNER:



● = Corner recorded on the sheet

1888 ES
Registration Number

Office of Clerk and Recorder, County of Beaver Lodge
This "corner record" was filed for record on the 3rd day of January, 1978, was noted on the cross-index plat and is assigned page No. 190, in book No. 1

Mary Char Roberts
County Official

Cross Index No. A-1 T. 5N R. 10W Mer. W