

INSTRUCTIONS

1. Original and/or subsequent record used to evaluate the corner position.
2. Description of evidence found, note discrepancies in the record, state method of establishing lost or obliterated corners.
3. Description of monument and accessories set to perpetuate the corner position.
4. Sketch of corner, show all pertinent data which can best be shown in a sketch example, corner marking, topography ties, position of accessories, etc.
5. Certification must be signed and sealed by Land Surveyor registered in the State of Montana.
6. Fill in Cross Index & Section Diagram at bottom of sheet.

CERTIFIED CORNER RECORDATION

1/4 Corner Sections 22 & 27 T. 5 N. R. 12 W. P.M.M. Deer Lodge County

ORIGINAL RECORD: (G.L.O.) Not recovered.

SUBSEQUENT RECORD: (1953 B.L.M.)

Set an iron post, 28 ins. long, 2½ ins. diam., 21 ins. in the ground, with brass cap mkd. [as shown below]
Bury the original cor. stone and set a 2x4 ins. white wooden post alongside the iron post. Raise a small mound of stone around the iron post.

EVIDENCE FOUND: Found 3¼" Brass Cap, 0.75' above ground, from which:
A wood 2x4, 2.5' above ground bears north, 2.5 feet dist.
A 5/8" rebar, 3.8' above ground bears southwest, 0.4 feet dist.
A 4 way fence corner bears north 2.0 feet dist.

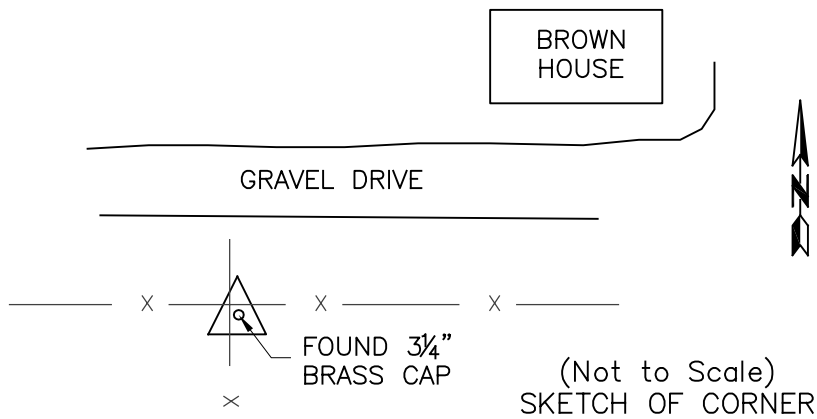
PERPETUATION: Left monument as found.

Located approx. 75 feet south of private driveway, behind storage sheds, approx. 25 feet up gradual north facing slope.

Date of Survey: October, 2009.



NAD 83 coordinates for this corner:
Latitude = 46°09'53.94450"N Longitude = 113°05'19.09745"W
NOTE: These coordinates are to be used as a search tool only.



CERTIFICATION

I, Steve Cummings
certify the information shown herein is true and correct.

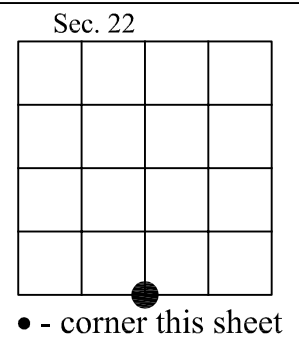
Signature Ground Party Chief

I, Kurt A. Luebke
certify that this Corner Record correctly represents work performed by me or under my direction in compliance with the "Corner Recordation Act" (70-22-101, et seq., M.C.A.)

Signature of Surveyor & Seal

Date: 10-27-2009 Reg. No. 13237 S

Employer: DJ&A P. C.



Cross Index No. R-15 T. 5 N. R. 12 W. PMM