

INSTRUCTIONS

1. Original and/or subsequent record used to evaluate the corner position.
2. Description of evidence found, note discrepancies in the record, state method of establishing lost or obliterated corners.
3. Description of monument and accessories set to perpetuate the corner position.
4. Sketch of corner, show all pertinent data which can best be shown in a sketch example, corner marking, topography ties, position of accessories, etc.
5. Certification must be signed and sealed by Land Surveyor registered in the State of Montana.
6. Fill in Cross Index & Section Diagram at bottom of sheet.

CERTIFIED CORNER RECORDATION

1/4 Corner Sections 19 & 20 T. 5 N. R. 13 W. P.M.M. Deer Lodge County

ORIGINAL RECORD: (G.L.O.) Not recovered.

SUBSEQUENT RECORD: (1967 B.L.M.)

The 1/4 sec. cor. of secs. 19 and 20, identical with Cor. No. 1 of H.E.S. No. 292, monumented with an iron post, 2 1/2 ins. diam., set, mkd. and witnessed as described in the official record of the 1964 Remonumentation, under Group No. 517, Montana.

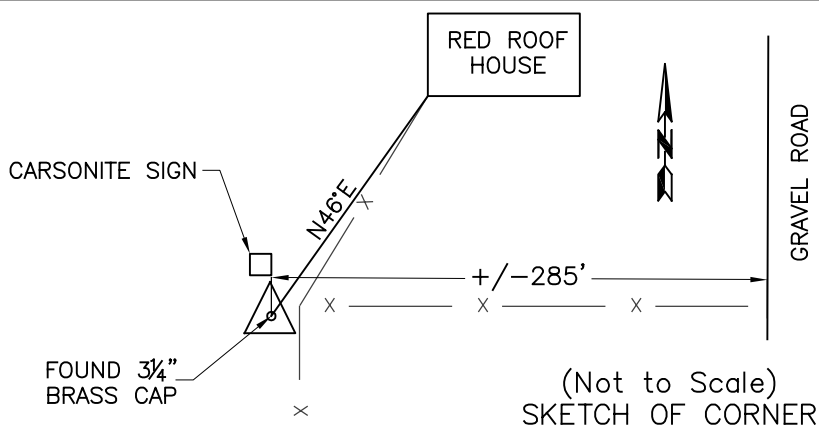
EVIDENCE FOUND: Found 3 1/4" Brass Cap, marked as shown below, 0.6' above ground with carsonite post alongside, from which:  
A house with a red roof bears N46°E

PERPETUATION: Left monument as found.

Date of Survey: October, 2009.



NAD 83 coordinates for this corner:  
Latitude = 46°10'19.59738"N Longitude = 113°15'51.94644"W  
NOTE: These coordinates are to be used as a search tool only.



CERTIFICATION

I, Steve Cummings  
certify the information shown herein is true and correct.

\_\_\_\_\_  
Signature Ground Party Chief

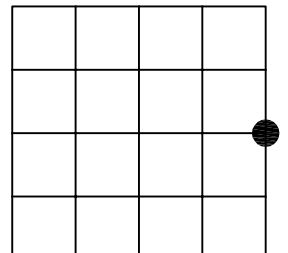
I, Kurt A. Luebke  
certify that this Corner Record correctly represents work performed by me or under my direction in compliance with the "Corner Recordation Act" (70-22-101, et seq., M.C.A.)

\_\_\_\_\_  
Signature of Surveyor & Seal

Date: 10-27-2009 Reg. No. 13237 S

Employer: DJ&A P. C.

Sec. 19



● - corner this sheet

Cross Index No. P-5 T. 5 N. R. 13 W. PMM