

**INSTRUCTIONS**

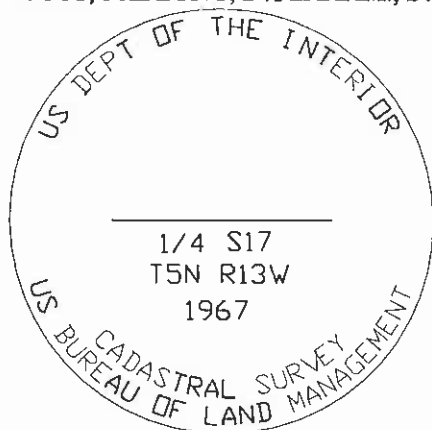
1. Original and/or subsequent record used to evaluate the corner position.
2. Description of evidence found, note discrepancies in the record, state method of establishing lost or obliterated corners.
3. Description of monument and accessories set to perpetuate the corner position.
4. Sketch of corner, show all pertinent data which can best be shown in a sketch example, corner marking, topography ties, position of accessories, etc.
5. Certification must be signed and sealed by Land Surveyor registered in the State of Montana.
6. Fill in Cross Index & Section Diagram at bottom of sheet.

**CERTIFIED CORNER RECORDATION**

CORNER NORTH 1/4 SECTION 17 T 5 N R 13 W PMM ANACONDA-DEER LODGE COUNTY

**RECORD:** BLM DEPENDENT RESURVEY, JULY 11 TO SEPT 25, 1967

SET AN IRON POST, 30in LONG, 2 1/2 in DIAM., 24in IN THE GROUND, WITH BRASS CAP MKD.



**FROM WHICH:**

A PINE 6 INS DIAM., BEARS S 22 °E, 78 LKS MKD 1/4 S17 BT  
 A SPRUCE 7 INS DIAM., BEARS S 72 1/4 °W, 5 LKS MKD 1/4 S17 BT

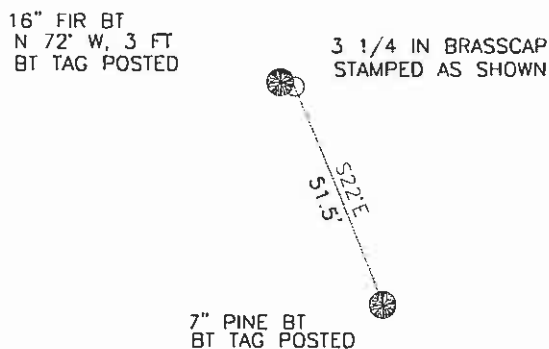
**FOUND:** 3 1/4 IN BRASSCAP, 5 IN ABOVE GRND MARKED AS SHOWN

16" FIR BEARS N 72° W, 4.5 LKS (3 FT) WITH BT TAG  
 7" PINE BEARS S 22°E, 78 LKS (51.5 FT) WITH BT TAG

**SET:** NOTHING

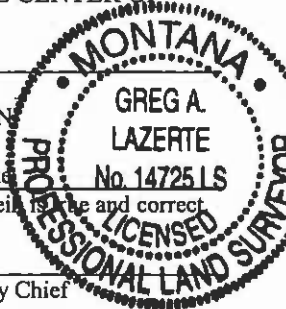
**NOTE:** ALL DISTANCES NOTED FOR BEARING TREES ARE HORIZONTAL DISTANCES FROM THE CENTER OF THE TREE TO THE MONUMENT

**SKETCH OF CORNER**



**CERTIFICATION**

I, Greg LaZerte certify the information shown herein is true and correct



Signature Ground Party Chief

I, Greg A. LaZerte, LS certify that this Corner Record correctly represents work performed by me or under my direction in compliance with the "Corner Recordation Act" (70-22-101, et seq., M.C.A.)

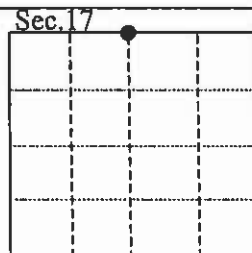
*Greg A. LaZerte*  
 Signature of Surveyor & Seal

Date: 10/17/2002 Reg. No. 14725LS

Employer: WGM Group, Inc.

Office of Clerk and Recorder, County of DEER LODGE This "corner record" was filed for record on the OCTOBER 21 day of 20 02 was noted on the cross-index plat and assigned Page No. 558 in Book No. 2 Barbara J. Vaughn DEPUTY County Official

Cross Index No. J-7 T 5N R 13W PMM



• - Corner this sheet