

INSTRUCTIONS

1. Original and/or subsequent record used to evaluate the corner position.
2. Description of evidence found, note discrepancies in the record, state method of establishing lost or obliterated corners.
3. Description of monument and accessories set to perpetuate the corner position.
4. Sketch of corner, show all pertinent data which can best be shown in a sketch example, corner marking, topography ties, position of accessories, etc.
5. Certification must be signed and sealed by Land Surveyor registered in the State of Montana.
6. Fill in Cross Index & Section Diagram at bottom of sheet.

CERTIFIED CORNER RECORDATION

Closing Corner Sections 9 & 16 T. 5 N. R. 13 W. P.M.M. Deer Lodge County

ORIGINAL RECORD: (G.L.O.) Not recovered.

SUBSEQUENT RECORD: (B.L.M.)

Point for the closing cor. of secs. 9 and 16, only, at proportionate distance; there is no remaining evidence of the original corner.

Set an iron post, 30 ins. long, 2 1/2 ins. diam., 24 ins. in the ground, with brass cap mkd. [as shown below] from which:

A pine, 5 ins. diam., bears N. 12 1/4° E., 34 lks. dist., mkd. T5N R13W S9 CC BT.

A pine, 8 ins. diam., bears S. 14 3/4° E., 55 lks. dist., mkd. T5N R13W S16 CC BT.

Raise a collar of stone, 3 ft. diam., around the iron post.

EVIDENCE FOUND: Found 3/4" Brass Cap, bent 0.1' to the east, 0.55' above ground in high mound of dirt and stone, from which:

A pine, 6 ins. diam., scribing visible, bears N10°E, 22.1 feet dist.

A pine, 11 ins. diam., dead, scribing visible, bears S18°E, 36.65 feet dist.

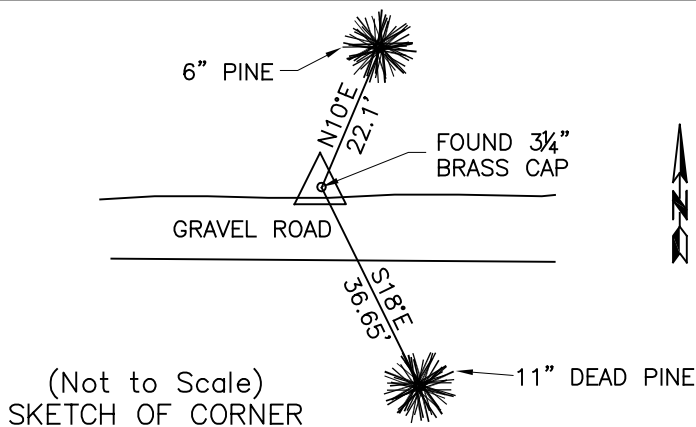
PERPETUATION: Affixed MARLS tag to 6" pine.

Located on north edge of abandoned gravel road.

Date of Survey: October, 2009.



NAD 83 coordinates for this corner:  
 Latitude = 46°11'37.06301"N Longitude = 113°14'36.75165"W  
 NOTE: These coordinates are to be used as a search tool only.



CERTIFICATION

I, Steve Cummings  
 certify the information shown herein is true and correct.

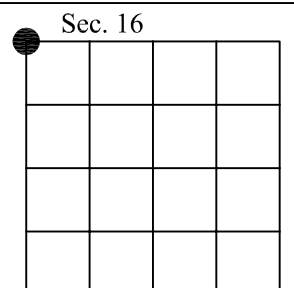
\_\_\_\_\_  
 Signature Ground Party Chief

I, Kurt A. Luebke  
 certify that this Corner Record correctly represents work performed by me or under my direction in compliance with the "Corner Recordation Act" (70-22-101, et seq., M.C.A.)

\_\_\_\_\_  
 Signature of Surveyor & Seal

Date: 10-27-2009 Reg. No. 13237 S

Employer: DJ&A P. C.



● - corner this sheet

Cross Index No. J-9 T. 5 N. R. 13 W. PMM