

CERTIFIED LAND CORNER RECORDATION
(REFERENCE FSM 7153.53)

DESCRIPTION OF CORNER EVIDENCE FOUND, AND ORIGINAL RECORD (IF KNOWN)

NO ORIGINAL EVIDENCE FOUND
(A 3" SQUARE POST, 4' LONG)

DESCRIPTION OF MONUMENT AND ACCESSORIES ESTABLISHED
TO PERPETUATE THE ORIGINAL LOCATION OF THIS CORNER:

Date of work: 7/96

SET 5/8" REBAR W/ ALUMINUM
CAP AS MARKED BELOW. TOOK
2 BEARING TREES: 7" FIR BEARS
N 85° E, 20.6'; 8" PINE BEARS S 12° E,
15.3'

SKETCH, WITH COURSE AND DISTANCE TO ADJACENT CORNERS IF DETERMINED IN THIS SURVEY.
(MAY SKETCH OR PASTE REPRODUCTION ON REVERSE SIDE.)

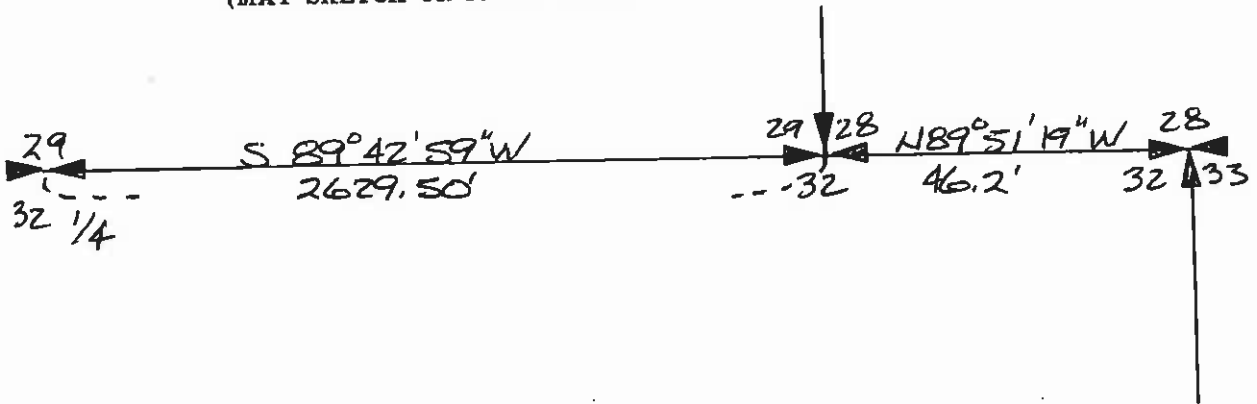
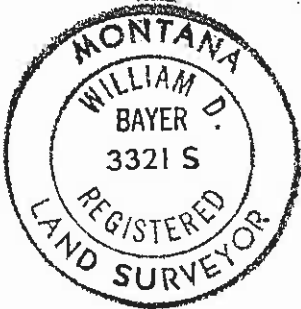


DIAGRAM OF CORNER:

Surveyor's Seal

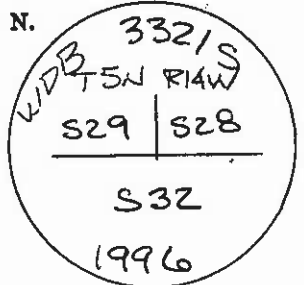


I, HANS BOHRNSEN
certify that the information shown herein is true and
correct.

Hans Bohrsen
Signature of Ground Party Chief

I,
certify that I have carefully performed or reviewed the
work done on the diagrammed corner as reported on this
recordation form and approve the same.

William D. Bayer
Signature of Surveyor



= Corner recorded on the sheet

33215
Registration Number

Office of Clerk and Recorder, County of Granite

This "corner record" was filed for record on the 23rd day of June, 1997, was noted on the cross-index plat and
assigned page No. 35338, in book No. 35338

W. D. Bayer
County Official

Cross Index No. V 9 T. 521 R. 14W Me
SECTION 28, 29, 32