

CERTIFIED LAND CORNER RECORDATION
(REFERENCE FSM 7153.53)

DESCRIPTION OF CORNER EVIDENCE FOUND, AND ORIGINAL RECORD (IF KNOWN)

NO ORIGINAL EVIDENCE
FOUND. (4" DIAMETER POST,
4' LONG).

DESCRIPTION OF MONUMENT AND ACCESSORIES ESTABLISHED
TO PERPETUATE THE ORIGINAL LOCATION OF THIS CORNER:

Date of work: 7/96

SET 5/8" DIA. REBAR W/ ALUM.
CAP. AS MARKED BELOW.
NO BEARING TREES

SKETCH, WITH COURSE AND DISTANCE TO ADJACENT CORNERS IF DETERMINED IN THIS SURVEY.
(MAY SKETCH OR PASTE REPRODUCTION ON REVERSE SIDE.)

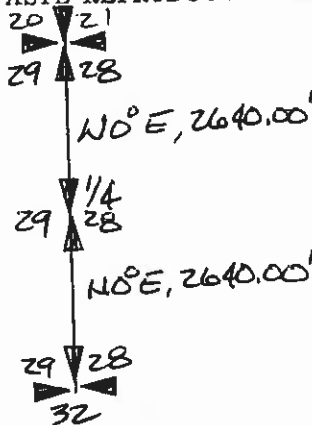
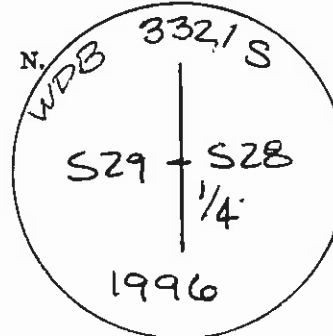
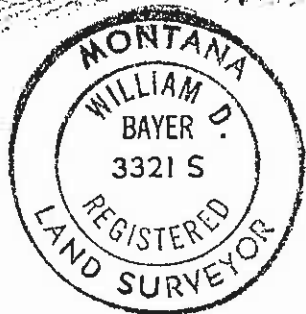


DIAGRAM OF CORNER:



= Corner recorded on the sheet

Surveyor's Seal



I, HANS BOHENSEN
certify that the information shown herein is true and
correct.

Hans Bohensen
Signature of Ground Party Chief

I,
certify that I have carefully performed or reviewed the
work done on the diagrammed corner as reported on this
recording form and approve the same.

William P. Bayer
Signature of Surveyor

33215
Registration Number

Office of Clerk and Recorder, County of Granite

This "corner record" was filed for record on the 23rd day of June 1997, was noted on the cross-index plat and
assigned page No. _____, in book No. 35340

Jo Bayl
County Official

Cross Index No. T 9 T 5N R 14W M

S28 S29